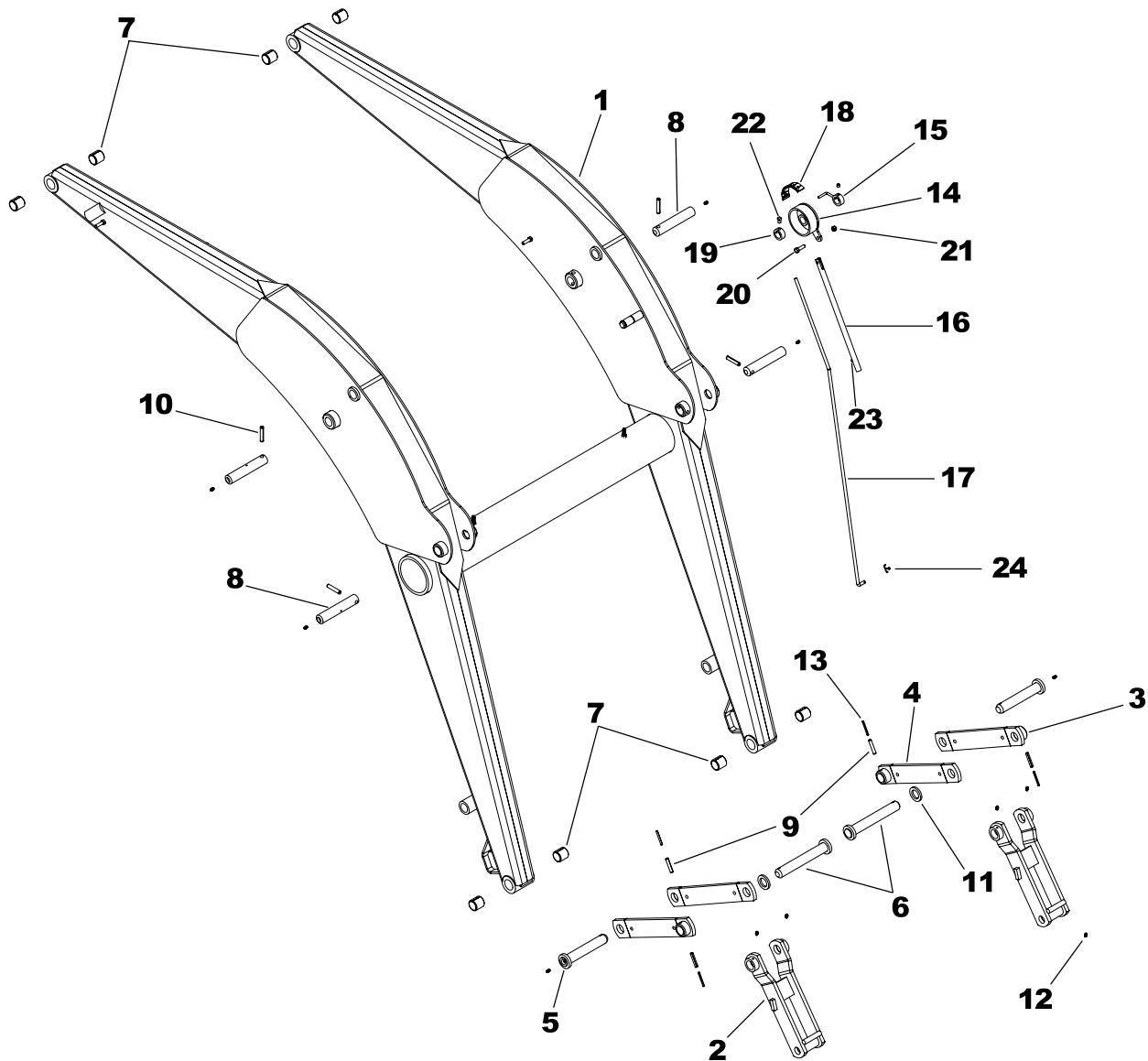


BASIC LOADER TOWER REPLACEMENT PARTS

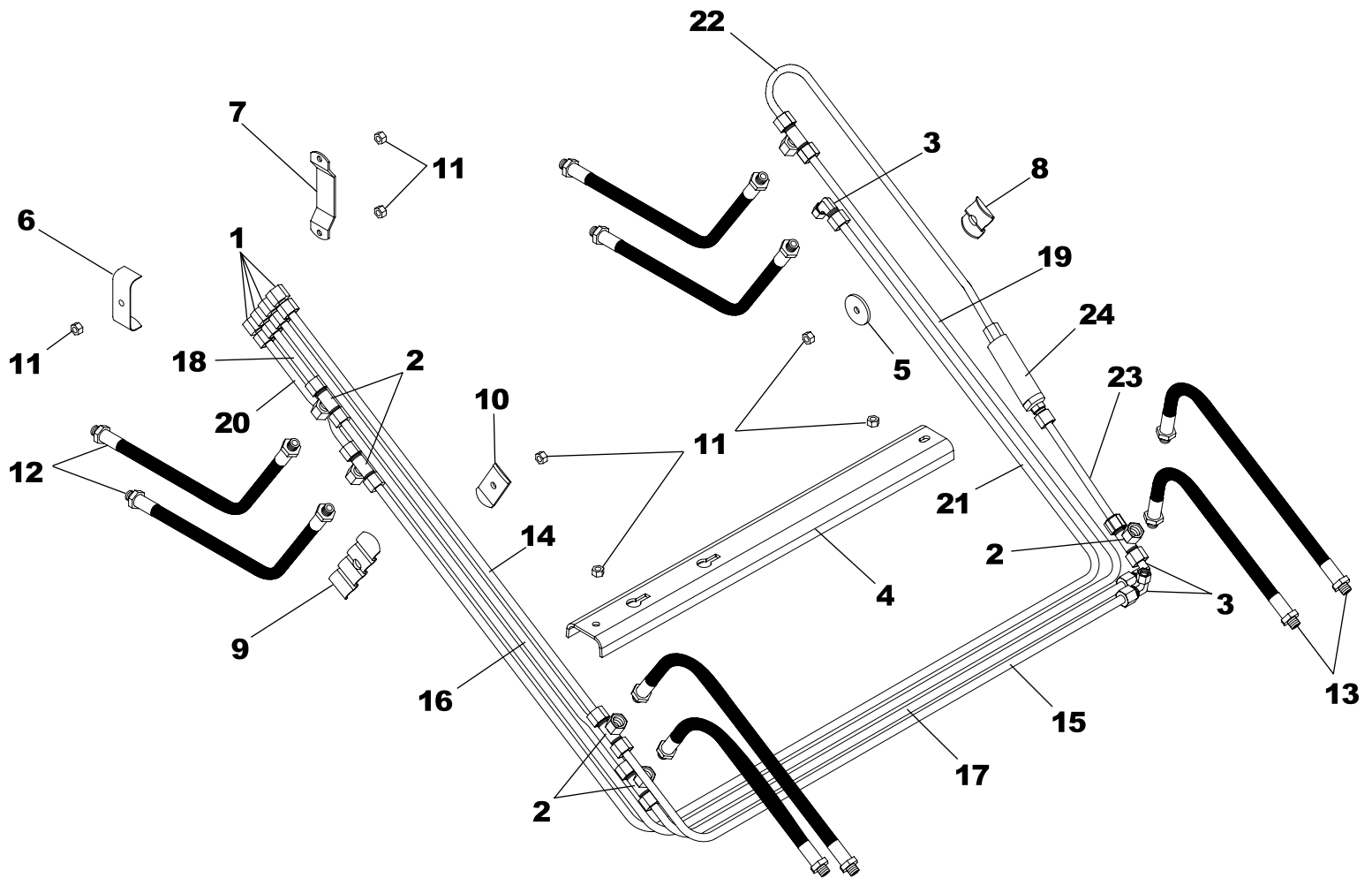
Ref.	Part No.	Description	Qty.	Ref.	Part No.	Description	Qty.
1	XBT-112AAS	TOWER & SUB-FRAME	1	10	XAF-55AS	PIN ROUND HEAD/ZERK	6
2	XBF-23AS	S.L. LINKAGE BAR	2	11	DLP0700036	DRIVE LOCK PIN	12
3	XAT-25AS	LATCH	2	12	XAF-54C	LINKAGE PIN/ZERK	6
4	HHS1011040	5/8" X 2-1/2" BOLT	2	13	LW-32	INSERT BUSHING	8
5	HTN1011	5/8" LOCK NUT	2	14	ZER1805	GREASE FITTING	12
6	XBF-30AS-L	LEFT HINGE PLATE	1	15	XBT-70AS	SHIPPING TUBE/CROSS TUBE	2
7	XBF-29AS-L	LEFT HINGE PLATE	1	16	XBF-73	SHIPPING CLAMP	2
8	XBF-29AS-R	RIGHT HINGE PLATE	1	17	HHS0813016	1/2" X 1" SHIPPING BOLT	2
9	XBF-30AS-R	RIGHT HINGE PLATE	1				



BASIC LOADER ARM REPLACEMENT PARTS

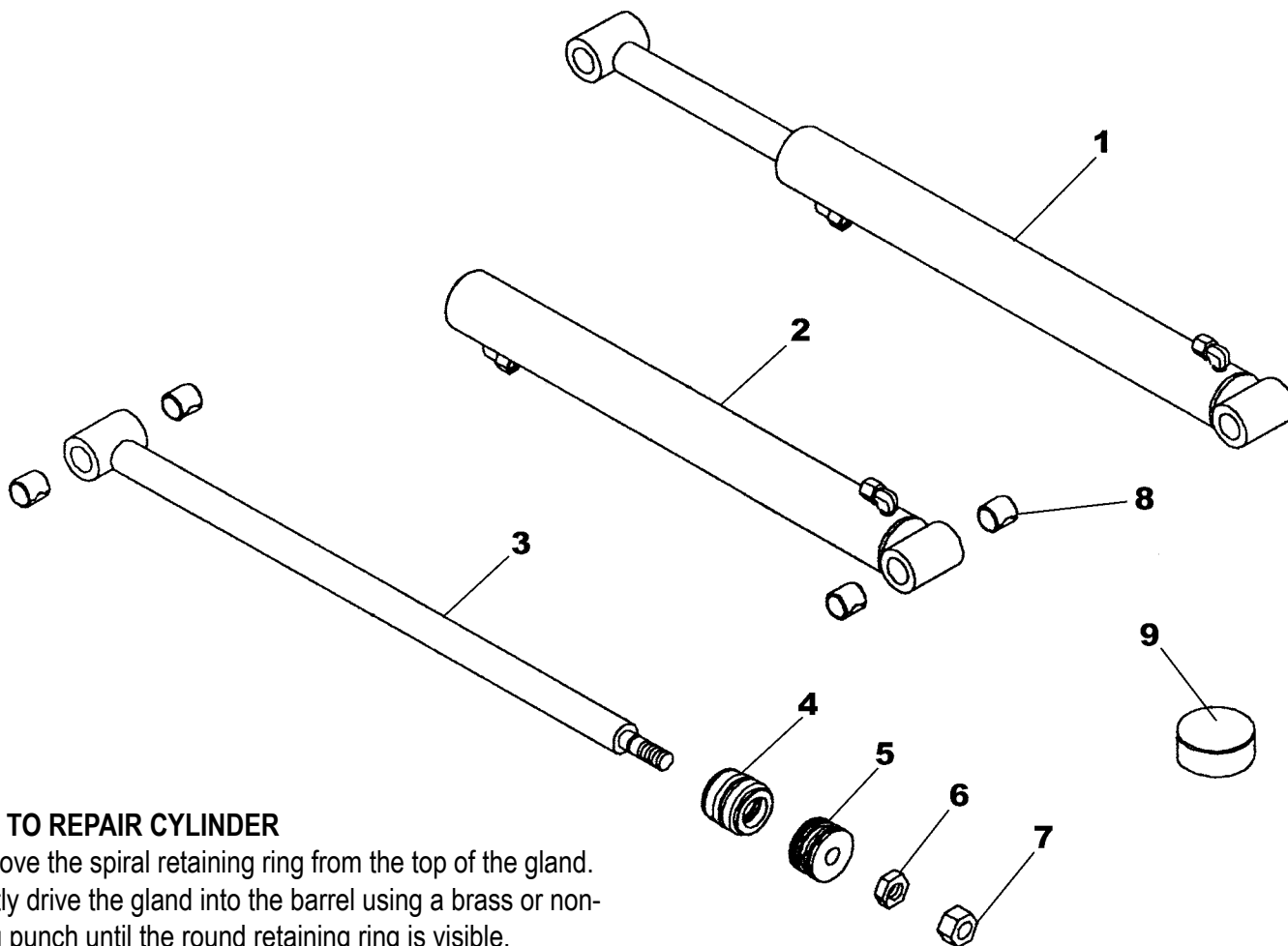
Ref.	Part No.	Description	Qty.	Ref.	Part No.	Description	Qty.
1	XBF-4AAS	FRAME ASSEMBLY	1	*	LAC-15-16	BUCKET INDICATOR KIT	1
2	NAF-15BAS	LINKAGE CONNECTOR	2	14	GRD-101SUB	BUCKET INDICATOR SUB	1
3	XBF-10AS	LINKAGE BAR	2	15	GRD-2AS	BUCKET INDICATOR POINTER	1
4	XBF-11AS	LINKAGE BAR W/BUSHING	2	16	GRD-105	GAUGE ROD HOLDER	1
5	XAF-55AS	PIN ROUND HEAD	2	17	GRD-140	GAUGE ROD	1
6	LMF-125AS	PIN ROUND HEAD	2	18	DE-GRD	DECAL	1
7	LW-32	INSERT	8	19	BUS-105	BUSHING	1
8	XAF-54C	PIN	4	20	HHS0616020	3/8" X 1 1/4" BOLT	1
9	RLP0600032	3/8" X 2" ROLL PIN	4	21	HTN0616	3/8" LOCK NUT	1
10	DLP0700036	DRIVE LOCK PIN	4	22	SHS0616008	3/8" X 1/2" SQUARE HEAD SET SCREW	1
11	NAF-117	SPACER WASHER	2	23	AHS0616006	3/8" X 3/8" ALLEN HEAD SET SCREW	2
12	ZER1805	GREASE FITTING	12	24	CTK0200016	1/8" X 1" COTTER KEY	1
13	RLP0350032	7/32" X 2" ROLL PIN	4				

NOTE: *Order LAC-15-16 when ordering a complete Rotational Bucket Indicator Kit.



HYDRAULIC LINES

Ref.	Part No.	Description	Qty.	Ref.	Part No.	Description	Qty.
1	PF-FFC8	FLAIRLESS TO 1/2 NPT	4	13	H06030FF	3/8" X 30" HOSE	4
2	PF-FSBT8	SWIVEL TEE	6	14	OLT-400A	OIL LINE	1
3	PF-FSE8	SWIVEL ELBOW	3	15	OLT-401A	OIL LINE	1
4	OH-2	OIL LINE COVER	1	16	OLT-402A	OIL LINE	1
5	OH-16	OIL LINE HOLDER	1	17	OLT-403A	OIL LINE	1
6	OH-19	OIL HOSE HOLDER	1	18	OLT-404A	OIL LINE	1
7	OH-17	OIL HOSE HOLDER	1	19	OLT-405A	OIL LINE	1
8	OH-13A	OIL LINE (BACK)	1	20	OLT-406A	OIL LINE	1
9	OH-14A	OIL LINE HOLDER (BACK)	1	21	OLT-407A	OIL LINE	1
10	OH-3	OIL LINE HOLDER	1	22	OLT-410A	OIL LINE	1
11	HTN0616	3/8" LOCK NUT	7	23	OLT-411A	OIL LINE	1
12	H06020FF	3/8" X 20" HOSE	4	24	SLV-1A	RELIEF VALVE	1



STEPS TO REPAIR CYLINDER

- 1) Remove the spiral retaining ring from the top of the gland.
- 2) Gently drive the gland into the barrel using a brass or non-marring punch until the round retaining ring is visible.
- 3) Remove the round retaining ring using a pair of long nose pliers. Remove the ram assembly (ram, gland, and piston) from the barrel.
- 4) Notice the direction they are pointing so they can be properly assembled.
- 5) Remove the jam nut and/or hex nut from the end of the ram.
- 6) Remove the piston and gland from ram.
- 7) Remove the old seals and rings and replace them with the new seals and rings. (Seal kits are packaged for several different cylinders. You may have extra parts.)
- 8) Clean the cylinder with cleaner and a clean **lint free** cloth.
- 9) Lubricate the seals and rings to aid assembly.
- 10) Assemble the cylinder by reversing the order.

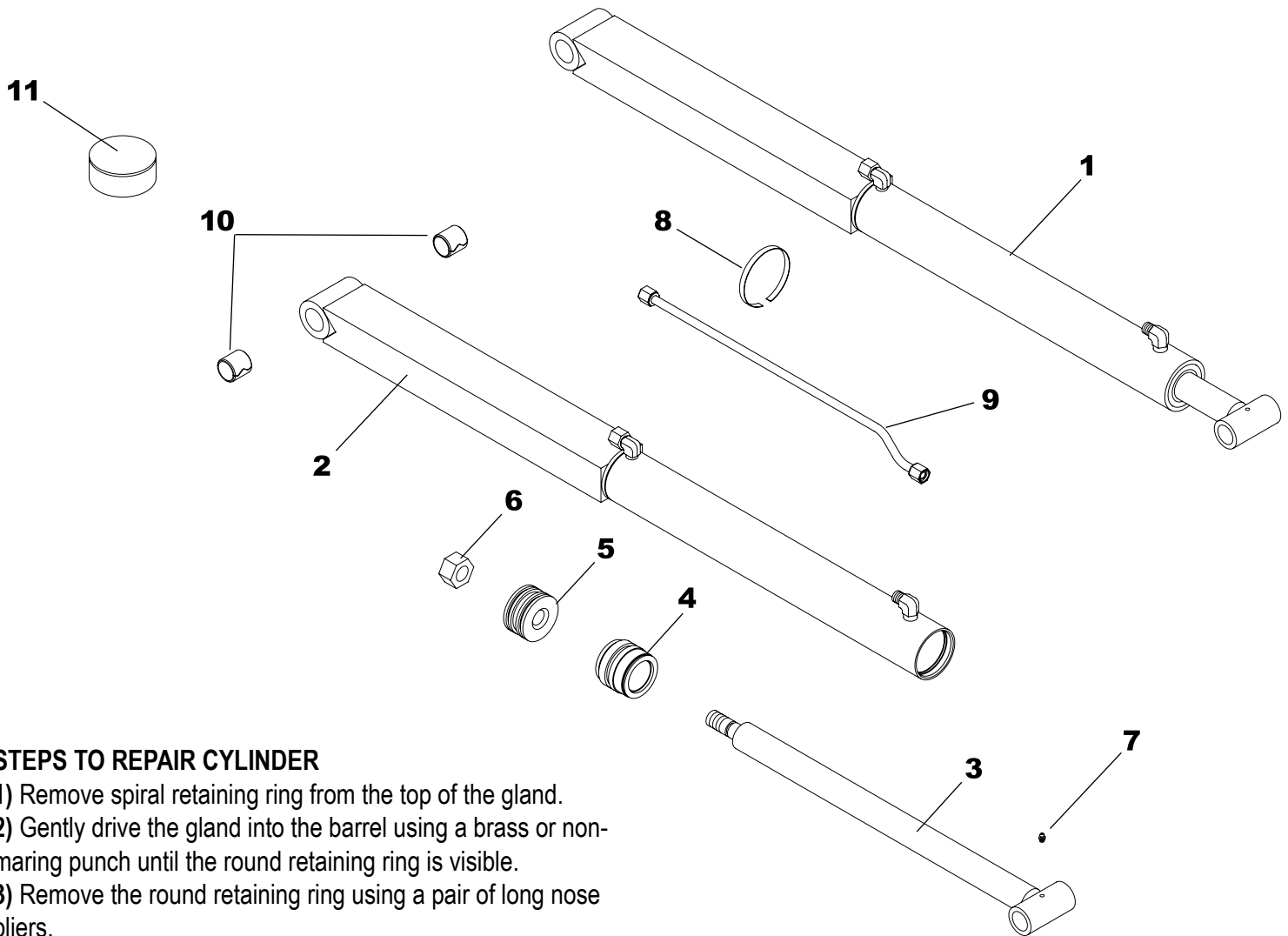
CYLINDER REPAIR TIPS

- When disassembling cylinders, keep the parts in correct orientation. Remove parts in sequence.
- Note the direction of the piston and gland. Lay out old seals and parts as they are removed.
- Assemble cylinder in the proper order; lubricate to aid assembly.

LIFT CYLINDER REPLACEMENT PARTS

Ref.	Part No.	Description	Qty.
1	L-33	CYLINDER (COMPLETE)	1
2	L-3301	CYLINDER BARREL	1
3	L-3310	CYLINDER RAM	1
4	G-L	GLAND	1
5	P-B	PISTON	1
6	HJN1614	1" HEX JAM NUT	1
7	HFN1614	1" HEX NUT	1
8	LW-32	INSERT BUSHING	4
9	#4CK	REPAIR KIT	*

NOTE: *Seal kit contains parts to repair one cylinder.



STEPS TO REPAIR CYLINDER

- 1) Remove spiral retaining ring from the top of the gland.
- 2) Gently drive the gland into the barrel using a brass or non-marring punch until the round retaining ring is visible.
- 3) Remove the round retaining ring using a pair of long nose pliers.
- 4) Remove the ram assembly (ram, gland, & piston) from barrel.
- 5) Notice the direction they are pointing so they can be properly re-assembled.
- 6) Remove the jam nut and/or hex nut from the end of the ram.
- 7) Remove the old seals and rings and replace them with the new seals and rings. *(Seal kits are packaged for several different cylinders--you may have extra parts.)*
- 8) Clean the cylinder with cleaner and a clean **lint free** cloth.
- 9) Lubricate the seals and rings to aid assembly.
- 10) Assemble the cylinder by reversing the order.

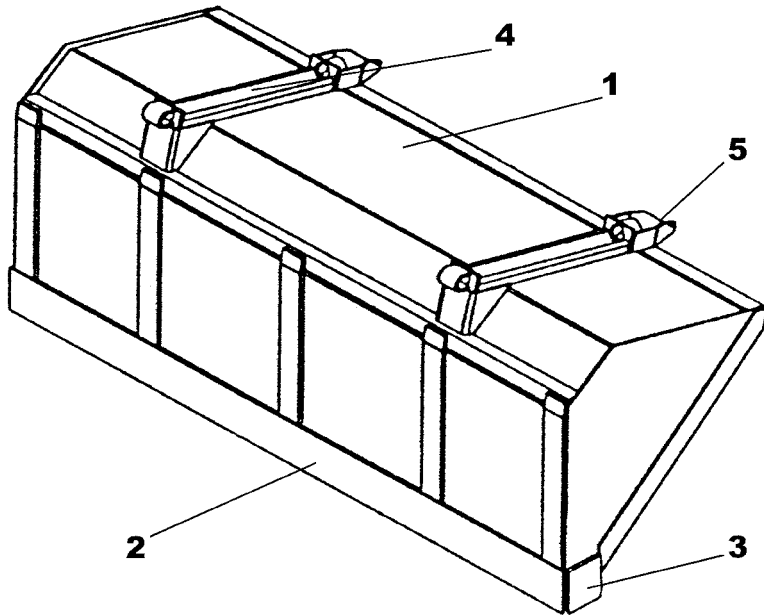
CYLINDER REPAIR TIPS

- When disassembling cylinders, keep the parts in correct orientation. Remove parts in sequence.
- Note the direction of the piston and gland. Lay out old seals and parts as they are removed.
- Assemble cylinder in the proper order; lubricate to aid assembly.

BUCKET CYLINDER REPLACEMENT PARTS

Ref.	Part No.	Description	Qty.
1	B-35	CYLINDER (COMPLETE)	1
2	B-3501	CYLINDER BARREL	1
3	B-2410	CYLINDER RAM	1
4	G-L	GLAND	1
5	P-B	PISTON	1
6	HFN1614	1" HEX NUT	1
7	ZER1805	GREASE FITTING	2
8	BAND-15	METAL BAND	1
9	OLT-1A	OIL LINE	1
10	LW-32	INSERT BUSHING	2
11	#4CK	REPAIR KIT	*

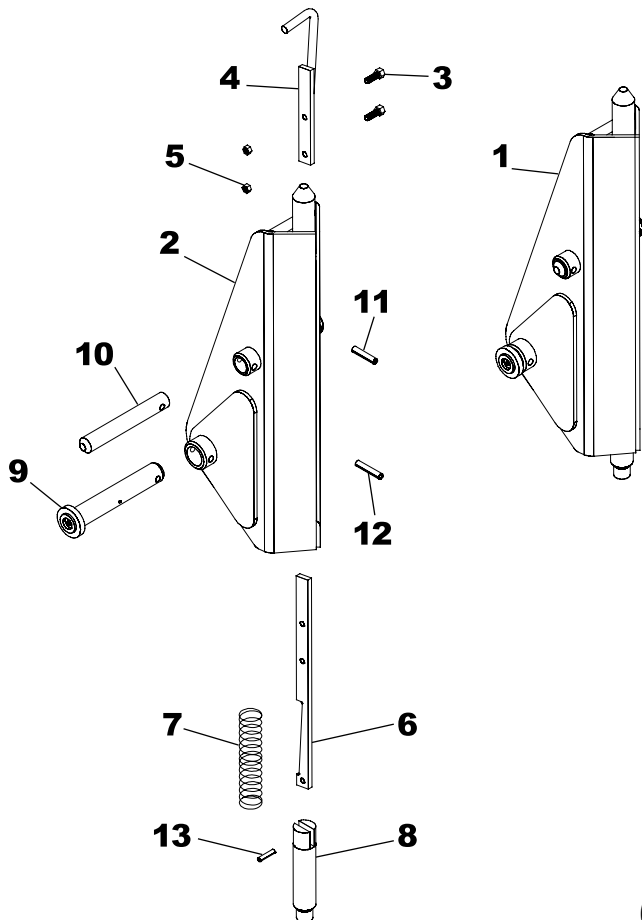
NOTE: *Seal kit contains parts to repair one cylinder.



BUCKET

Ref.	Part No.	Description	Qty.
1	84Q425	84" BUCKET COMPLETE	*
	90Q425	90" BUCKET COMPLETE	*
	96Q429	96" BUCKET COMPLETE	*
2	SB-14	84" CUTTING EDGE	*
	LB-14	90" CUTTING EDGE	*
	JB-14	96" CUTTING EDGE	*
3	SB-15	SIDE BLADE	2
4	QC-13AAS	RECEIVER ADAPTOR	2
5	JB-22	ATTACH GUIDE (OPTION)	--

NOTE: Qty. shows the number of parts you will receive if you place an order using these part numbers.



SNAP-ATTACH™ COUPLER (C-4B)

Ref.	Part No.	Description	Qty.
1	QC-1201BCOM	SNAP-ATTACH™ (COMPLETE)	1
2	QC-1201AS	SNAP-ATTACH™ (SHELL)	1
3	HHS0518016	5/16" X 1" BOLT	2
4	QC-7AS	HANDLE	1
5	HTN0518	5/16" LOCK NUT	2
6	QC-8C	LATCH	1
7	QC-12	SPRING	1
8	QC-3A	PLUNGER	1
9	XAF-55AS	1-1/4" PIN/GREASE ZERK	1
10	LF-51A	1" PIN	1
11	DRP0600028	DOUBLE ROLL PIN	1
12	DRP0350032	DOUBLE ROLL PIN	1
13	RLP0500020	5/16" X 1-1/4" ROLL PIN	1

NOTE: Qty. shows the number of parts you will receive if you place an order using these part numbers. C-4B is two (QC-1201BCOM)

COSMETICS

Ref.	Part No.	Description	Qty.	Ref.	Part No.	Description	Qty.
1	DEC-400B	DECAL KIT	1	3	V-9524-P	PINT BLACK PAINT	1
2	V-5403-A	RED SPRAY PAINT	1	4	V-9524-Q	QUART BLACK PAINT	1
	V-9524-A	BLACK SPRAY PAINT	1	5	V-9524-G	GALLON BLACK PAINT	1

NOTE: Warning decals are available at no charge. If they become damaged or missing, order part numbers DE-CW.