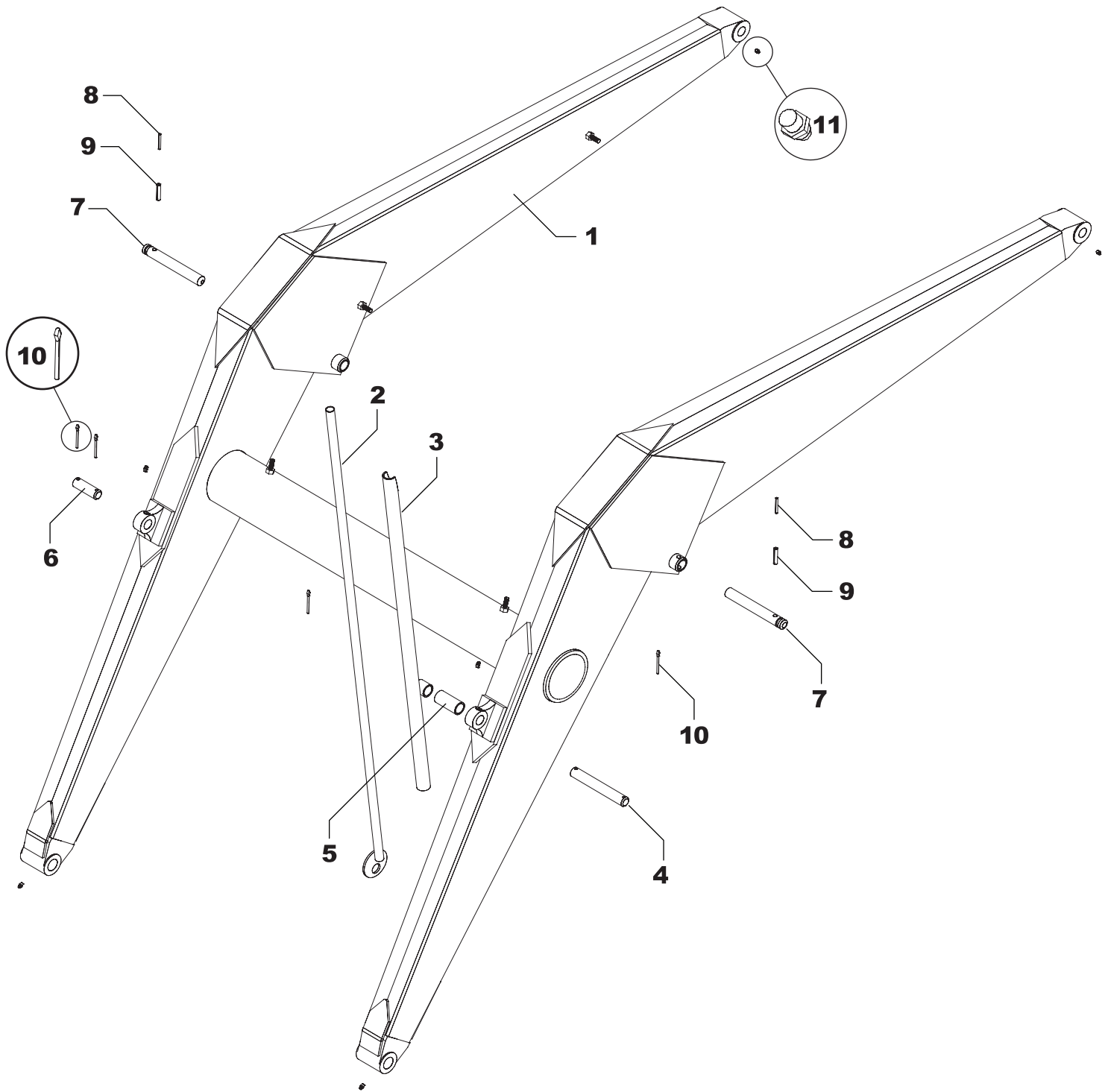


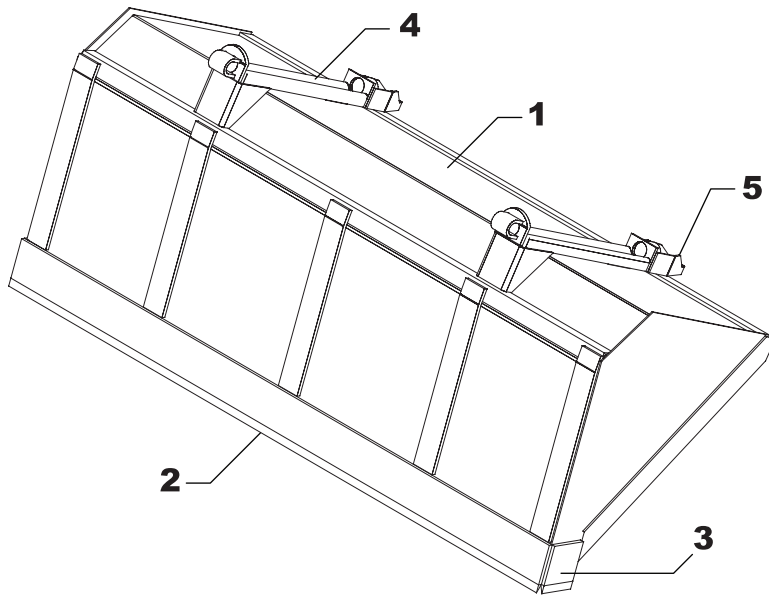
WL-42 BASIC LOADER TOWER REPLACEMENT PARTS

Ref.	Part No.	Description	Qty.	Ref.	Part No.	Description	Qty.
1	BT-1AAS	TOWER (WL-42)	1	5	JT-20A	PIN	4
	BT-101BAS	TOWER (WL-42A)	1	6	HHS1011028	5/8" X 1-3/4" BOLT	2
2	BT-18BAS-R	RIGHT FLIP LOCK	1	7	RLP0350028	7/32" X 1-3/4" ROLL PIN	4
3	BT-18BAS-L	LEFT FLIP LOCK	1	8	RLP0600028	3/8" X 1-3/4" ROLL PIN	4
4	BF-60	SPACER BUSHING	2				



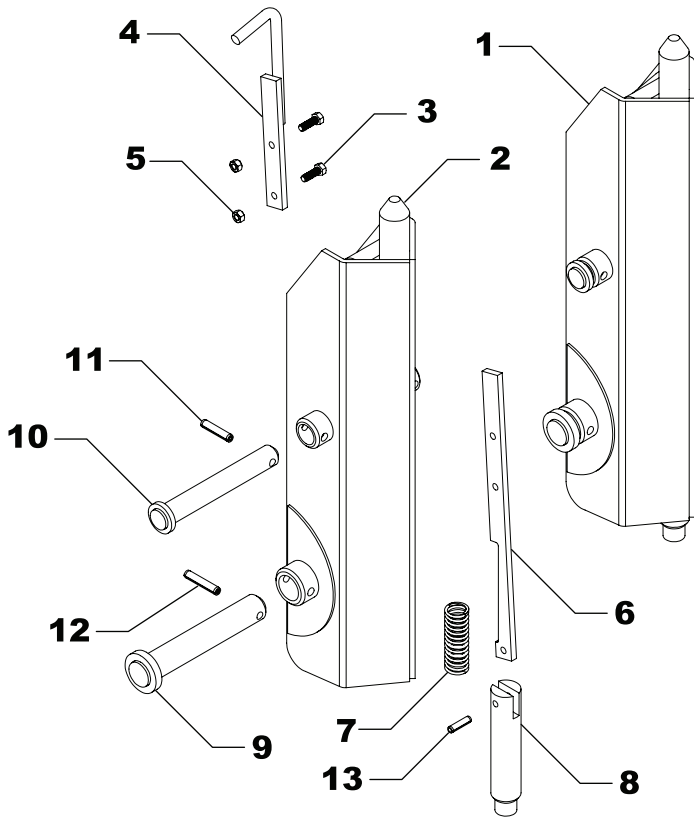
WL-42 BASIC LOADER ARM PARTS

Ref.	Part No.	Description	Qty.	Ref.	Part No.	Description	Qty.
1	BF-4BAS	FRAME	1	7	LF-82A	LIFT PIN	2
2	BF-47BAS	GAUGE ROD	1	8	RLP0350028	7/32" X 1-3/4" ROLL PIN	2
3	BF-50AS	GAUGE ROD HOLDER	1	9	RLP0600028	3/8" X 1-3/4" ROLL PIN	2
4	BF-59A	GAUGE ROD PIN	1	10	CTK0400032	COTTER KEY	4
5	BF-61A	GAUGE ROD SPACER	1	11	ZER1805	ZERK	6
6	LF-49	2 HOLE PIN	1				



WL-42 BUCKET

Ref.	Part No.	Description	Qty.
1	84Q425	84" BUCKET COMPLETE	-
1	96Q429	96" BUCKET COMPLETE	-
2	SB-14	84" - CUTTING EDGE	-
2	CB-14	96" - CUTTING EDGE	-
3	SB-15	SIDE BLADE	2
4	QC-13AAS	RECEIVER ADAPTOR	2
5	JB-22	ATTACH GUIDE (OPTION)	



WL-42 SNAP-ATTACH™ COUPLER (C-5)

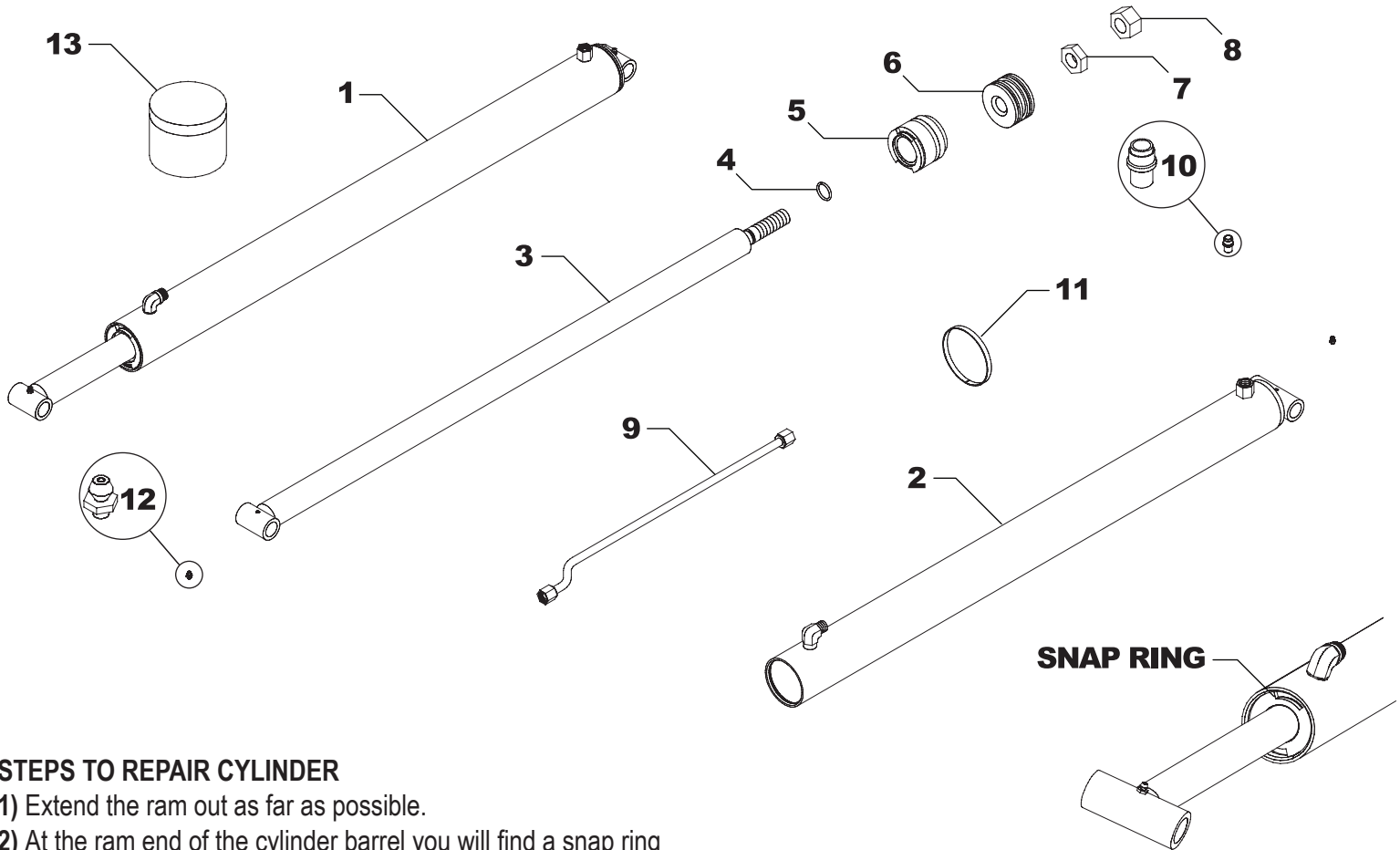
Ref.	Part No.	Description	Qty.
1	QC-501COM	SNAP ATTACH (COMPLETE)	1
2	QC-501AS	SNAP ATTACH (SHELL)	1
3	HHS0518016	5/16" x 1" BOLT	2
4	QC-6AS	LATCH HANDLE	1
5	HTN0518	5/16" LOCK NUT	2
6	QC-8	LATCH	1
7	QC-12	SPRING	1
8	QC-3	BOTTOM LATCH PIN	1
9	QC-206AS	LINKAGE PIN	1
10	LMF-18AAS	CYLINDER PIN	1
11	DRP0600028	DOUBLE ROLL PIN	1
12	DRP0600032	DOUBLE ROLL PIN	1
13	RLP0500020	5/16" X 1-1/4" ROLL PIN	1

NOTE: Qty. show the number of parts you will receive if you place an order using these part numbers.

WL-42 COSMETICS

Ref.	Part No.	Description	Qty.	Ref.	Part No.	Description	Qty.
1	DEC-42	DECAL KIT	1	4	V-5403-Q	QUART RED PAINT	1
2	V-5403-A	RED SPRAY PAINT	1		V-9524-Q	QUART BLACK PAINT	1
	V-9524-A	BLACK SPRAY PAINT	1	5	V-5403-G	GALLON RED PAINT	1
3	V-5403-P	PINT RED PAINT	1		V-9524-G	GALLON BLACK PAINT	1
	V-9524-P	PINT BLACK PAINT	1				

NOTE: Warning decals are available at no charge. If they become damaged or missing, order part number DE-DWWS, DE-WWWS, DE-PP, DE-QCC.



STEPS TO REPAIR CYLINDER

- 1) Extend the ram out as far as possible.
- 2) At the ram end of the cylinder barrel you will find a snap ring located either on the face of the gland or inside the notch of the gland.
- 3) Locate the snap ring eyes (you may need to turn the gland inside the barrel to find the snap ring eyes).
- 4) Compress the snap ring with snap ring pliers.
- 5) Remove the ram assembly (ram, gland, & piston) from barrel.
- 6) Notice the direction they are pointing so they can be properly re-assembled.
- 7) Remove the jam nut and/or hex nut from the end of the ram.
- 8) Remove the old seals and rings and replace them with the new seals and rings. *(Seal kits are packaged for several different cylinders - you may have extra parts.)*
- 9) Clean the cylinder with cleaner and a clean **lint free** cloth.
- 10) Lubricate the seals and rings to aid assembly.
- 11) Assemble the cylinder by reversing the order.

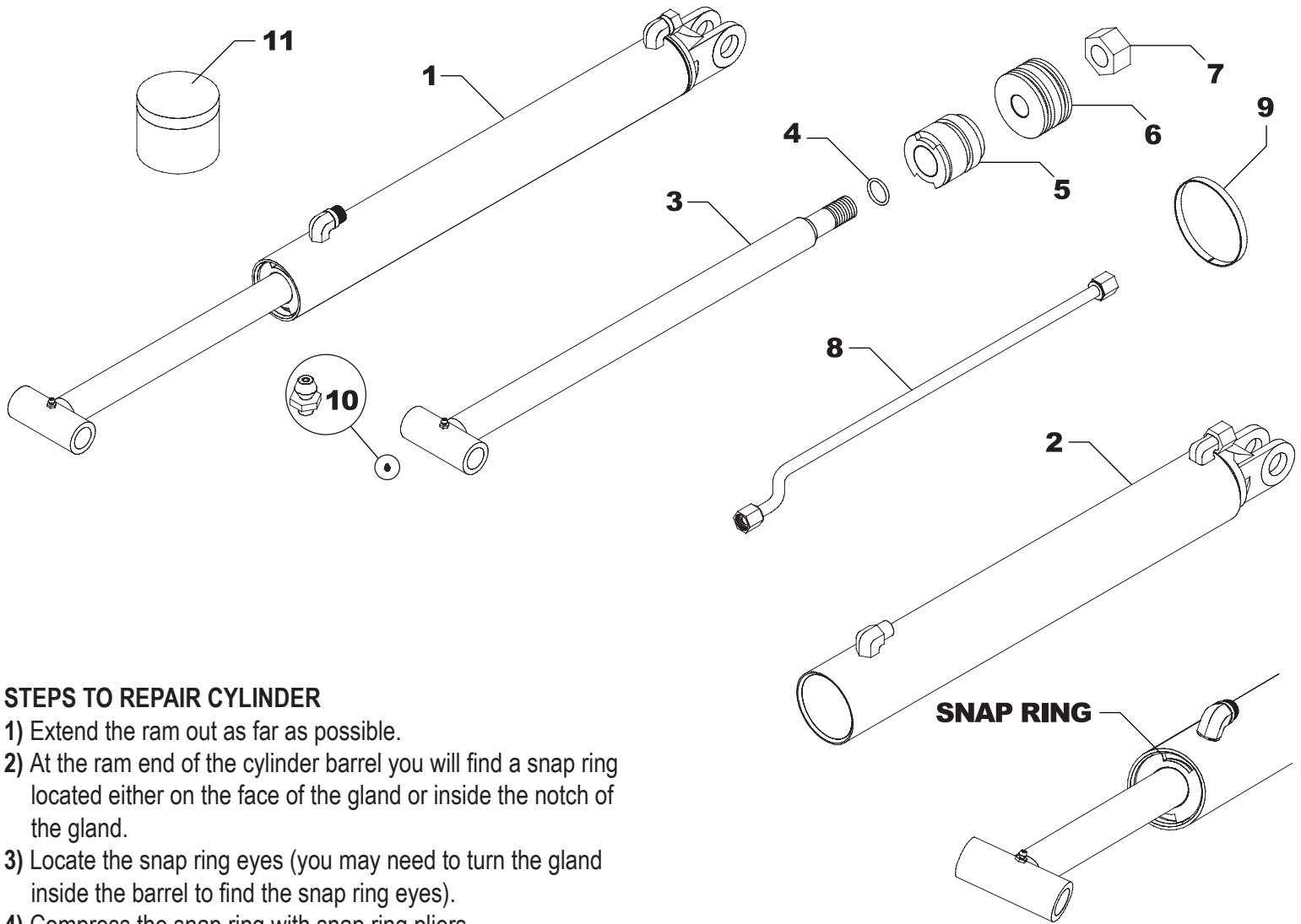
CYLINDER REPAIR TIPS

- When disassembling cylinders, keep the parts in correct orientation. Remove parts in sequence.
- Note the direction of the piston and gland. Lay out old seals and parts as they are removed.
- Assemble cylinder in the proper order; lubricate to aid assembly.

WL-42 LIFT CYLINDER REPLACEMENT PARTS

Ref.	Part No.	Description	Qty.
1	L-10E	CYLINDER COMPLETE	1
2	L-1001E	CYLINDER BARREL	1
3	L-1010B	CYLINDER RAM	1
4	OR-214	O-RING	1
5	G-B	GLAND	1
6	P-B	PISTON	1
7	HJN1614	1" JAM NUT	1
8	HFN1614	1" NUT	1
9	OLT-2	OIL LINE	1
10	L-819AS	PORT ASSEMBLY	1
11	BAND-15	METAL BAND	1
12	ZER1805	ZERK	2
13	# 4CK	SEAL KIT*	1

NOTE: Seal kit contains parts to repair one cylinder.



STEPS TO REPAIR CYLINDER

- 1) Extend the ram out as far as possible.
- 2) At the ram end of the cylinder barrel you will find a snap ring located either on the face of the gland or inside the notch of the gland.
- 3) Locate the snap ring eyes (you may need to turn the gland inside the barrel to find the snap ring eyes).
- 4) Compress the snap ring with snap ring pliers.
- 5) Remove the ram assembly (ram, gland, & piston) from barrel.
- 6) Notice the direction they are pointing so they can be properly re-assembled.
- 7) Remove the jam nut and/or hex nut from the end of the ram.
- 8) Remove the old seals and rings and replace them with the new seals and rings. *(Seal kits are packaged for several different cylinders - you may have extra parts.)*
- 9) Clean the cylinder with cleaner and a clean **lint free** cloth.
- 10) Lubricate the seals and rings to aid assembly.
- 11) Assemble the cylinder by reversing the order.

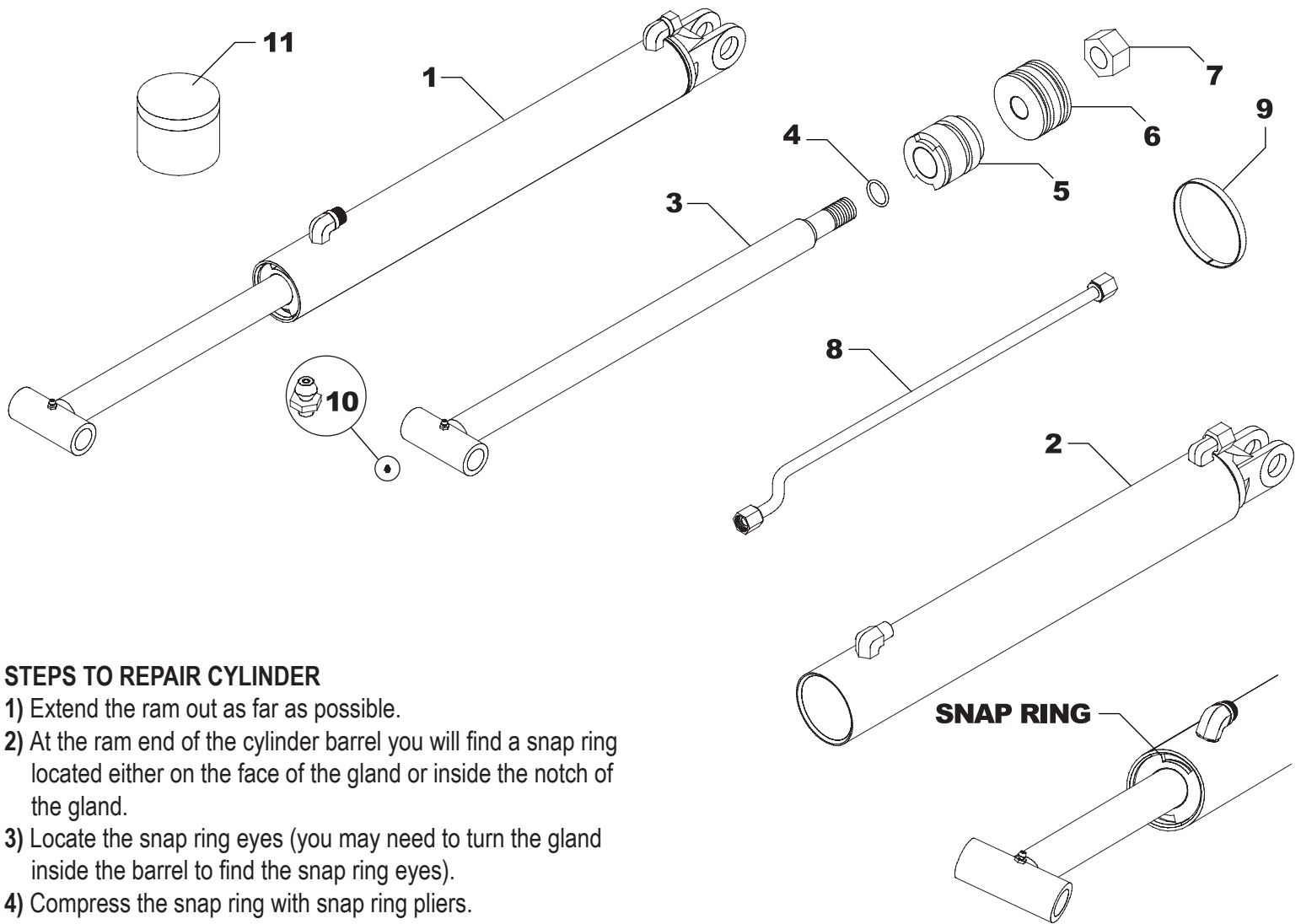
CYLINDER REPAIR TIPS

- When disassembling cylinders, keep the parts in correct orientation. Remove parts in sequence.
- Note the direction of the piston and gland. Lay out old seals and parts as they are removed.
- Assemble cylinder in the proper order; lubricate to aid assembly.

WL-42 BUCKET CYLINDER REPLACEMENT PARTS

Ref.	Part No.	Description	Qty.
1	B-1B	CYLINDER COMPLETE	1
2	B-101B	CYLINDER BARREL	1
3	B-110A	CYLINDER RAM	1
4	OR-214	O-RING	1
5	G-A	GLAND	1
6	P-A	PISTON	1
7	HFN1614	1" NUT	1
8	OLT-1	OIL LINE	1
9	BAND-12	METAL BAND	1
10	ZER1805	ZERK	1
11	# 1CK	SEAL KIT*	1

NOTE: Seal kit contains parts to repair one cylinder.



STEPS TO REPAIR CYLINDER

- 1) Extend the ram out as far as possible.
- 2) At the ram end of the cylinder barrel you will find a snap ring located either on the face of the gland or inside the notch of the gland.
- 3) Locate the snap ring eyes (you may need to turn the gland inside the barrel to find the snap ring eyes).
- 4) Compress the snap ring with snap ring pliers.
- 5) Remove the ram assembly (ram, gland, & piston) from barrel.
- 6) Notice the direction they are pointing so they can be properly re-assembled.
- 7) Remove the jam nut and/or hex nut from the end of the ram.
- 8) Remove the old seals and rings and replace them with the new seals and rings. (Seal kits are packages for several different cylinders - you may have extra parts. **NOTE:** Seal kit contains parts to repair one cylinder)
- 9) Clean the cylinder with cleaner and a clean **lint free** cloth.
- 10) Lubricate the seals and rings to aid assembly.
- 11) Assemble the cylinder by reversing the order.

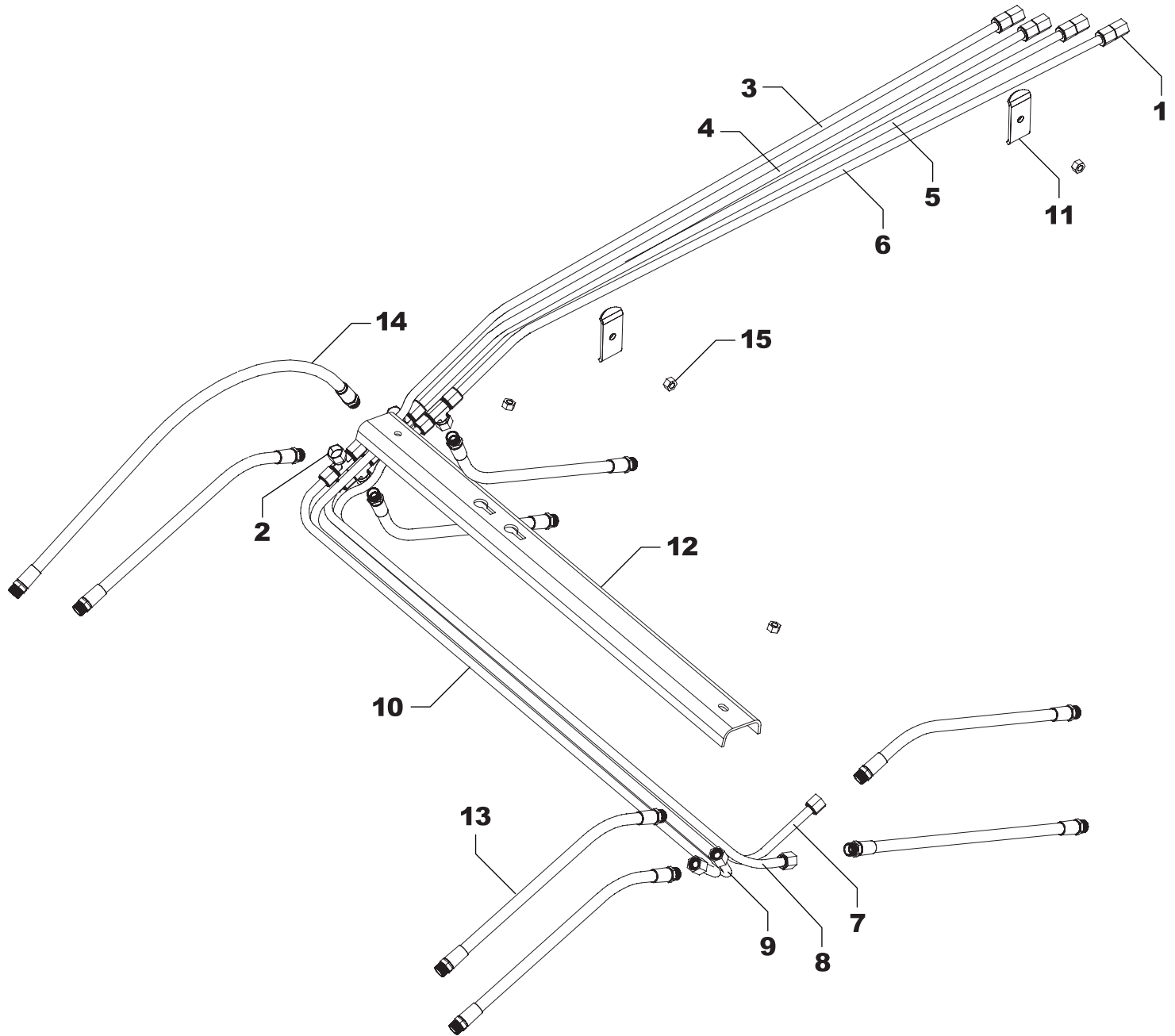
CYLINDER REPAIR TIPS

- When disassembling cylinders, keep the parts in correct orientation. Remove parts in sequence.
- Note the direction of the piston and gland. Lay out old seals and parts as they are removed.
- Assemble cylinder in the proper order; lubricate to aid assembly.

WL-42 OPTIONAL 3" BUCKET CYLINDER

Ref.	Part No.	Description	Qty.
1	B-4B	CYLINDER COMPLETE	1
2	B-401B	CYLINDER BARREL	1
3	B-410A	CYLINDER RAM	1
4	OR-214	O-RING	1
5	G-E	GLAND	1
6	P-B	PISTON	1
7	HFN1614	1" NUT	1
8	OLT-1	OIL LINE	1
9	BAND-12	METAL BAND	1
10	ZER1805	ZERK	1
11	# 4CK	SEAL KIT*	1

NOTE: Seal kit contains parts to repair one cylinder.



WL-42 HYDRAULIC REPLACEMENT PARTS

Ref.	Part No.	Description	Qty.	Ref.	Part No.	Description	Qty.
1	PF-FFC8	FEMALE CONNECTORS	4	9	OLT-38	OIL LINE	1
2	PF-FSBT8	SWIVEL NUT TEE	4	10	OLT-39	OIL LINE	1
3	OLT-32	OIL LINE	1	11	OH-3C	OIL LINE HOLDER	2
4	OLT-33	OIL LINE	1	12	OH-1A	OIL LINE COVER	1
5	OLT-34	OIL LINE	1	13	H06020FF	20" HOSE FLAIR END	7
6	OLT-35	OIL LINE	1	14	H06030FF	30" HOSE FLAIR END	1
7	OLT-36	OIL LINE	1	15	HFN0616	3/8" HEX NUT	4
8	OLT-37	OIL LINE	1				