

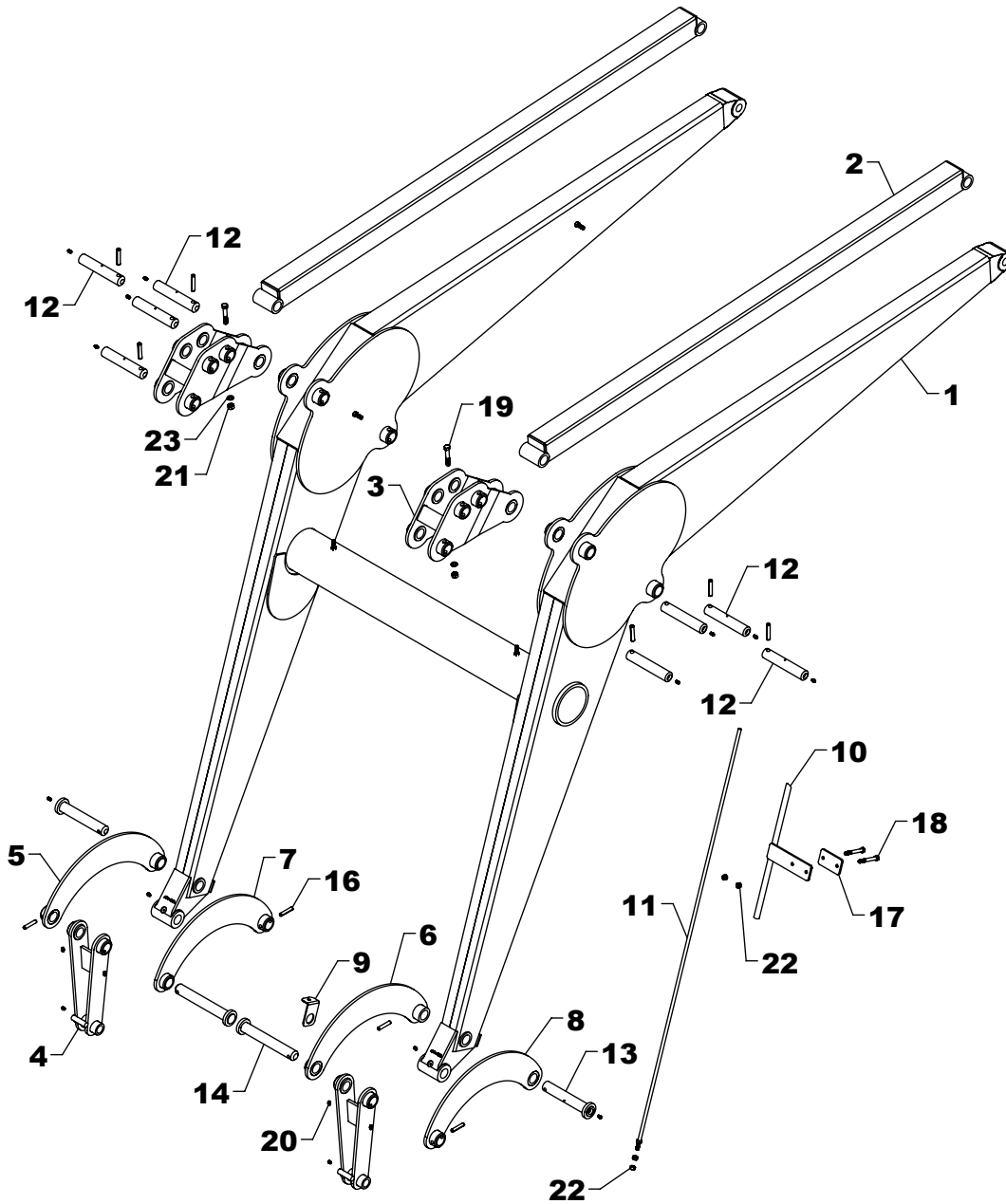
TA-48 LOADER TOWER REPLACEMENT PARTS

REF #	PART #	DESCRIPTION	QTY.
1	NDT-12AS - R	TOWER (RIGHT)	1
2	NDT-12AS - L	TOWER (LEFT)	1
--	NAT-120COM - R	SLIDE LOCK COMPLETE (RIGHT)	*
--	NAT-120COM - L	SLIDE LOCK COMPLETE (LEFT)	*
3	NAT-120AS - R	SLIDE LOCK (RIGHT)	1
4	NAT-120AS - L	SLIDE LOCK (LEFT)	1
5	CBF1011056	5/8" X 3 1/2" CARRIAGE BOLT	4
6	NAT-140	BAR CLAMP BOLT	4
7	RLG-51	SPRING	2
8	NAT-126	RIVET	2
9	NAT-106 - R	DROP LOCK (RIGHT)	1
10	NAT-106 - L	DROP LOCK (LEFT)	1

REF #	PART #	DESCRIPTION	QTY.
11	HHS1011028	5/8" X 1 3/4" BOLT	4
12	HHS1011072	5/8" X 4 1/2" BOLT	4
13	HTN1011	5/8" LOCK NUT	12
14	LWM10	5/8" LOCK WASHER	4
15	ZER1805	GREASE FITTING	6
16	XAF-54	LINKAGE PIN	6
17	RLP0700036	7/16" ROLL PIN	6
18	RT-15AS	SHOE	2
19	0H010	FRONT WRAP	**
20	OH-19	HOSE HOLDER	1
21	HHS0616032	3/8" X 2" BOLT	1
22	HTN0616	3/8" LOCK NUT	1

NOTE: * NAT-120COM - R contains 3, 5(2), 6(2), 7, 8, 9, & 13(4). NAT-120COM - L contains 4, 5(2), 6(2), 7, 8, 10, & 13(4).

** Varies by tractor (standard Front Wrap is 0H010).



TA-48 LOADER FRAME REPLACEMENT PARTS

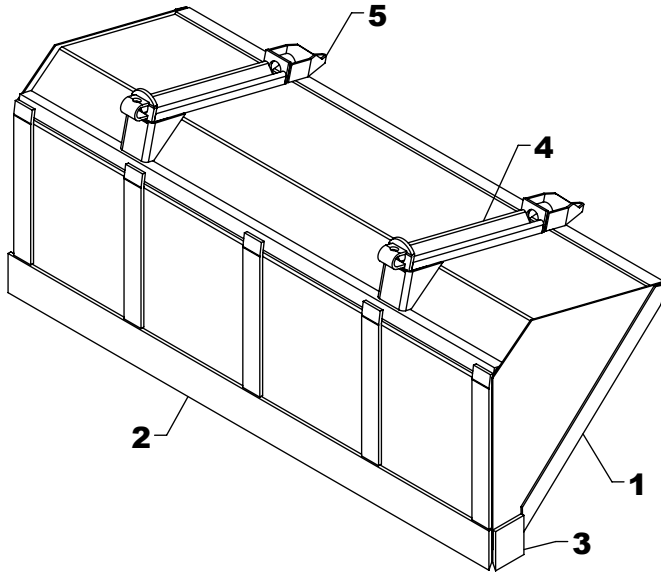
REF #	PART #	DESCRIPTION	QTY.
1	NDF-4AS	FRAME	1
2	NDF-23AS	SELF LEVELING TUBE	2
3	NDF-29AS	HINGE PLATE	2
4	NDF-15AS	LINKAGE CONNECTOR	2
5	NDF-10AS - R	OUTSIDE LINKAGE (RIGHT)	1
6	NDF-11AS - R	INSIDE LINKAGE (RIGHT)	1
7	NDF-11AS - L	INSIDE LINKAGE (LEFT)	1
8	NDF-10AS - L	OUTSIDE LINKAGE (LEFT)	1
9	NDF-16	GAUGE ROD END	1
10	NDF-31AS	GAUGE ROD HOLDER	1
11	NDF-47AS	GAUGE ROD	1
12	XAF-54	LINKAGE PIN	8

REF #	PART #	DESCRIPTION	QTY.
13	XAF-55AS	LINKAGE PIN	2
14	LMF-125AS	ROUND HEAD PIN	2
15	RLP0700036	7/16" ROLL PIN	6
16	DRP0600032	DOUBLE ROLL PIN	4
17	NDF-50	CLAMP PLATE	1
18	HHS0616048	3/8" X 3" BOLT	2
19	HHS0714040	7/16" X 2 1/2" BOLT	2
20	ZER1805	GREASE FITTING	18
21	HFN0714	7/16" NUT	2
22	HTN0616	3/8" LOCK NUT	4
23	LWM07	7/16" LOCK WASHER	2

WESTENDORFMFG PWB313290

WESTENDORF MFG. CO., INC. • PH:(712) 423-2762 • FAX: (712) 423-1460 • sales@westendorfmfg.com • www.loaders.com

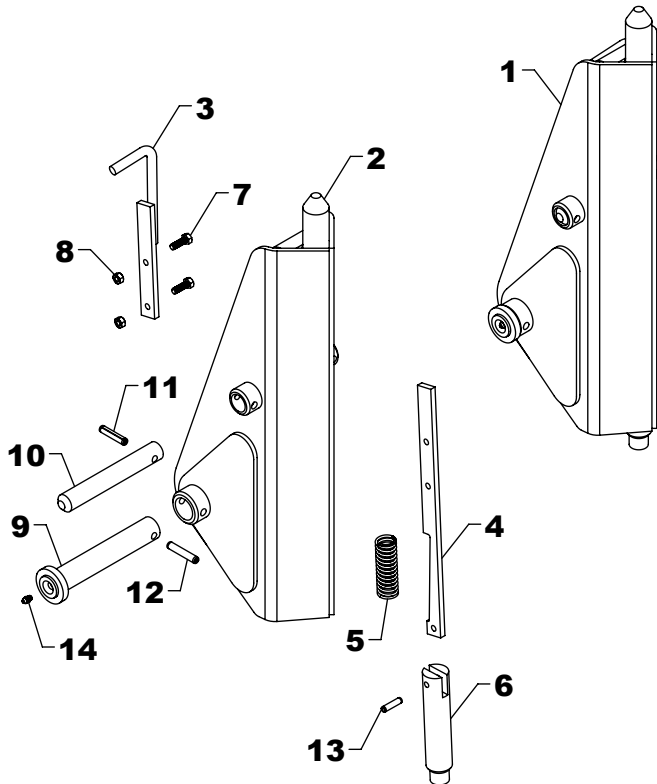
TA-45 / TA-46 TA-46A / TA-48 BUCKET



REF #	PART #	DESCRIPTION	QTY.
1	84Q425	84" BUCKET	1
	90Q425	90" BUCKET	1
	96Q429	96" BUCKET	1
2	SB-14	84" BLADE	1
	LB-14	90" BLADE	1
	CB-14	96" BLADE	1
3	SB-15	BLADE	2
4	QC-13AS	WELD ON ADAPTER	2
5	JB-22	GUIDE (OPTIONAL)	2

NOTE: *Check width of the bucket and use the part number that matches. If your size is not shown, contact Westendorf Mfg. Co.

TA-45 / TA-46 / TA-46A / TA-48 SNAP-ATTACH™ COUPLER (C-4B)



REF #	PART #	DESCRIPTION	QTY.
1	QC-1201COM	SNAP ATTACH	1
2	QC-1201AS	MALE COUPLER	1
3	QC-6AS	LATCH HANDLE	1
4	QC-8	LATCH	1
5	QC-12	SPRING	1
6	QC-3	BOTTOM LATCH PIN	1
7	HHS0518016	5/16" X 1" BOLT	2
8	HTN0518	5/16" LOCK NUT	2
9	XAF-55AS	LINKAGE PIN	1
10	LF-51	LINKAGE PIN	1
11	DRP0600028	DOUBLE ROLL PIN	1
12	DRP0600032	DOUBLE ROLL PIN	1
13	RLP0500020	5/16" X 1 1/4" ROLL PIN	1
14	ZER1805	GREASE FITTING	1

NOTE: Qty. shows number of parts received if ordered using listed part numbers.
C-4B is two (QC-1201COM) couplers.

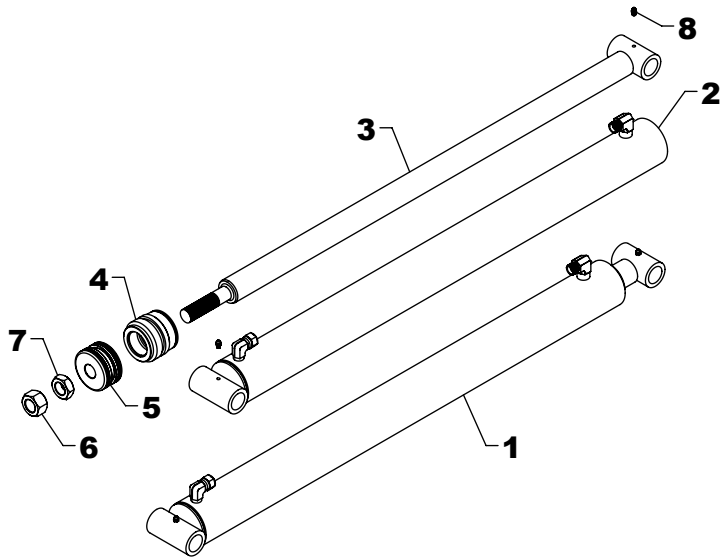
TA-45 / TA-46 / TA-46A / TA-48 COSMETICS

REF #	PART #	DESCRIPTION	QTY.
1	DEC-45	DECAL KIT (TA-45)	1
	DEC-46	DECAL KIT (TA-46 / TA-46A)	1
	DEC-48	DECAL KIT (TA-48)	1
2	V-5403-A	RED SPRAY PAINT	1
	V-9524-A	BLACK SPRAY PAINT	1

REF #	PART #	DESCRIPTION	QTY.
3	V-9524-P	PINT BLACK PAINT	1
4	V-9524-Q	QUART BLACK PAINT	1
5	V-9524-G	GALLON BLACK PAINT	1

NOTE: Warning decals are available at no charge. If they become damaged or missing, order part numbers DE-LDI, DE-DWWS, DE-WWWS, DE-TA7, DE-PP, DE-QC, DE-QCC.

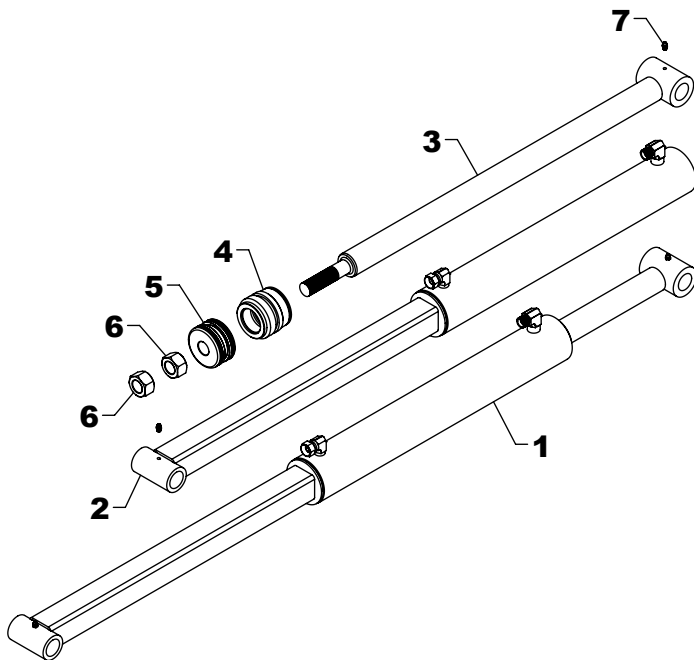
WESTENDORFMFG PWB313290



TA-46 / TA-46A / TA-48 LIFT CYLINDER REPLACEMENT PARTS

REF #	PART #	DESCRIPTION	QTY.
1	L-24	LIFT CYLINDER	1
2	L-2401	BARREL	1
3	L-2410	RAM	1
4	G-L	GLAND	1
5	P-B	PISTON	1
6	HFN1614	1" NUT	1
7	HJN1614	1" JAM NUT	1
8	ZER1805	GREASE FITTING	2
9	#4CK	REPAIR KIT	*

NOTE: * Repair kit contains parts to repair one cylinder



TA-48 BUCKET CYLINDER REPLACEMENT PARTS

REF #	PART #	DESCRIPTION	QTY.
1	B-37	BUCKET CYLINDER	1
2	B-3701	BARREL	1
3	B-3710	RAM	1
4	G-L	GLAND	1
5	P-B	PISTON	1
6	HFN1614	1" NUT	2
7	ZER1805	GREASE FITTING	2
8	#4CK	REPAIR KIT	*

NOTE: * Repair kit contains parts to repair one cylinder

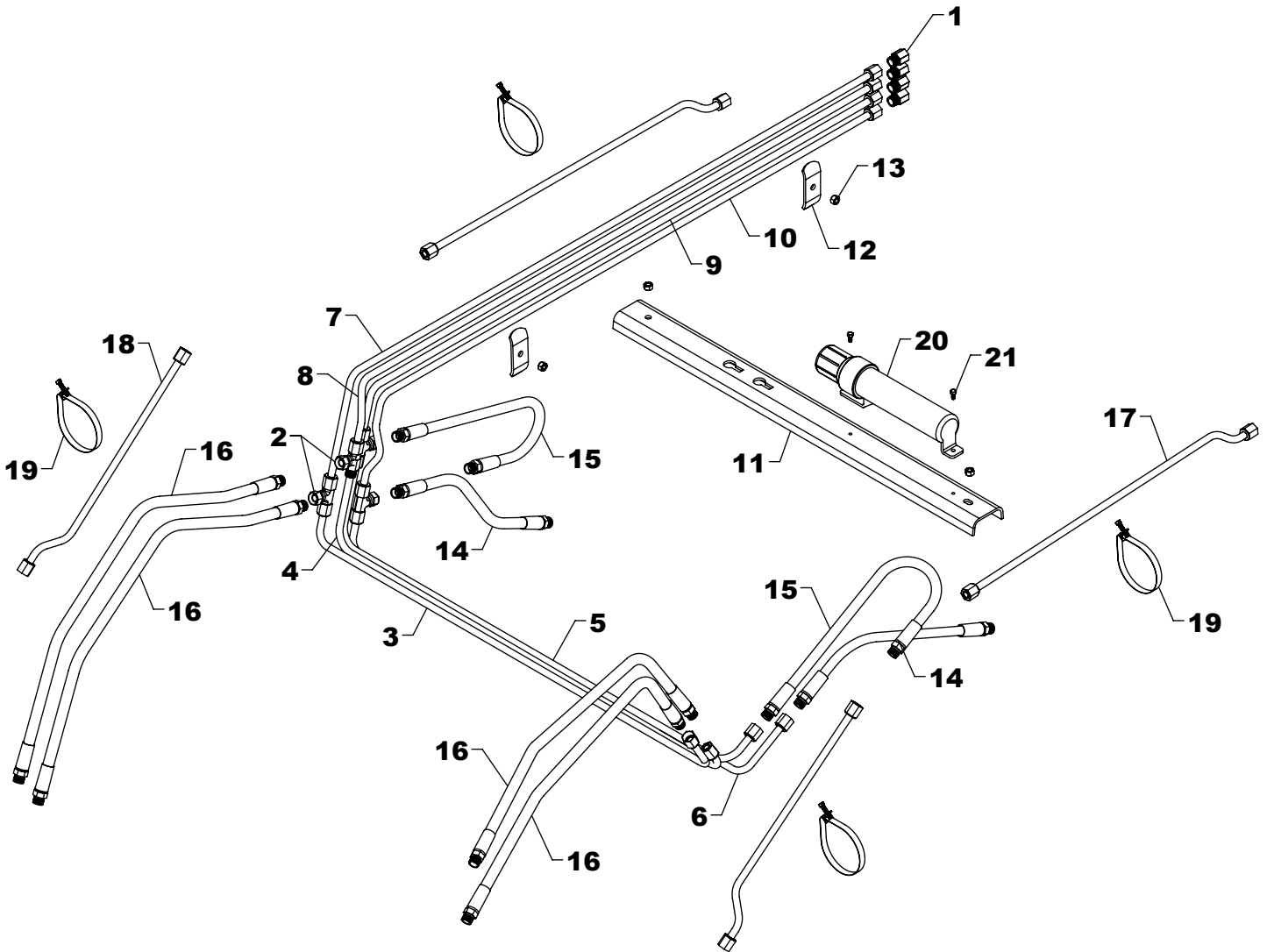
STEPS TO REPAIR CYLINDER

- 1) At the ram end of the cylinder barrel, remove the spiral retaining ring from the top of the gland.
NOTE: The G-E gland does not use the spiral retaining ring.
- 2) Gently drive the gland into the barrel using a brass or non-marring punch until the round retaining ring is visible.
- 3) Remove the round retaining ring using a pair of long nose pliers. Remove the ram assembly (ram, gland, and piston) from the barrel.
- 4) Notice the direction they're pointing so they can be properly re-assembled.
- 5) Remove the jam nut and/or hex nut from the end of the ram.

- 6) Remove the old seals and rings and replace them with the new seals and rings. (Seal kits are packaged for several different cylinders. You may have extra parts)
- 7) Clean cylinder with cleaner and a clean lint free cloth.
- 8) Lubricate the seals and rings to aid assembly.
- 9) Assemble the cylinder by reversing the order.

CYLINDER REPAIR TIPS

- When disassembling cylinders, keep the parts in correct orientation. Remove parts in sequence.
- Note the direction of the piston and gland. Lay out old seals and parts as they are removed.
- Assemble cylinder in proper order; lubricate to aid assembly.



TA-48 HYDRAULICS

REF #	PART #	DESCRIPTION	QTY.
1	PF-FFC8	FEMALE CONNECTOR	4
2	PF-FSBT8	SWIVEL NUT TEE	4
3	OLT-473	OIL LINE	1
4	OLT-142	OIL LINE	1
5	OLT-141	OIL LINE	1
6	OLT-474	OIL LINE	1
7	OLT-469	OIL LINE	1
8	OLT-470	OIL LINE	1
9	OLT-471	OIL LINE	1
10	OLT-472	OIL LINE	1
11	OH-1	OIL LINE PROTECTOR	1

REF #	PART #	DESCRIPTION	QTY.
12	OH-3	OIL LINE HOLDER	2
13	HTN0616	3/8" LOCK NUT	4
14	H06020-FF	3/8" X 20" HOSE	2
15	H06030-FF	3/8" X 30" HOSE	2
16	H06040-FF	3/8" X 40" HOSE	4
17	OLT-2	OIL LINE	2
18	OLT-143	OIL LINE	2
19	BAND-15	METAL BAND	4
20	GP-2	MANUAL CANISTER	1
21	EC-M03	SELF TAPPING SCREW	2