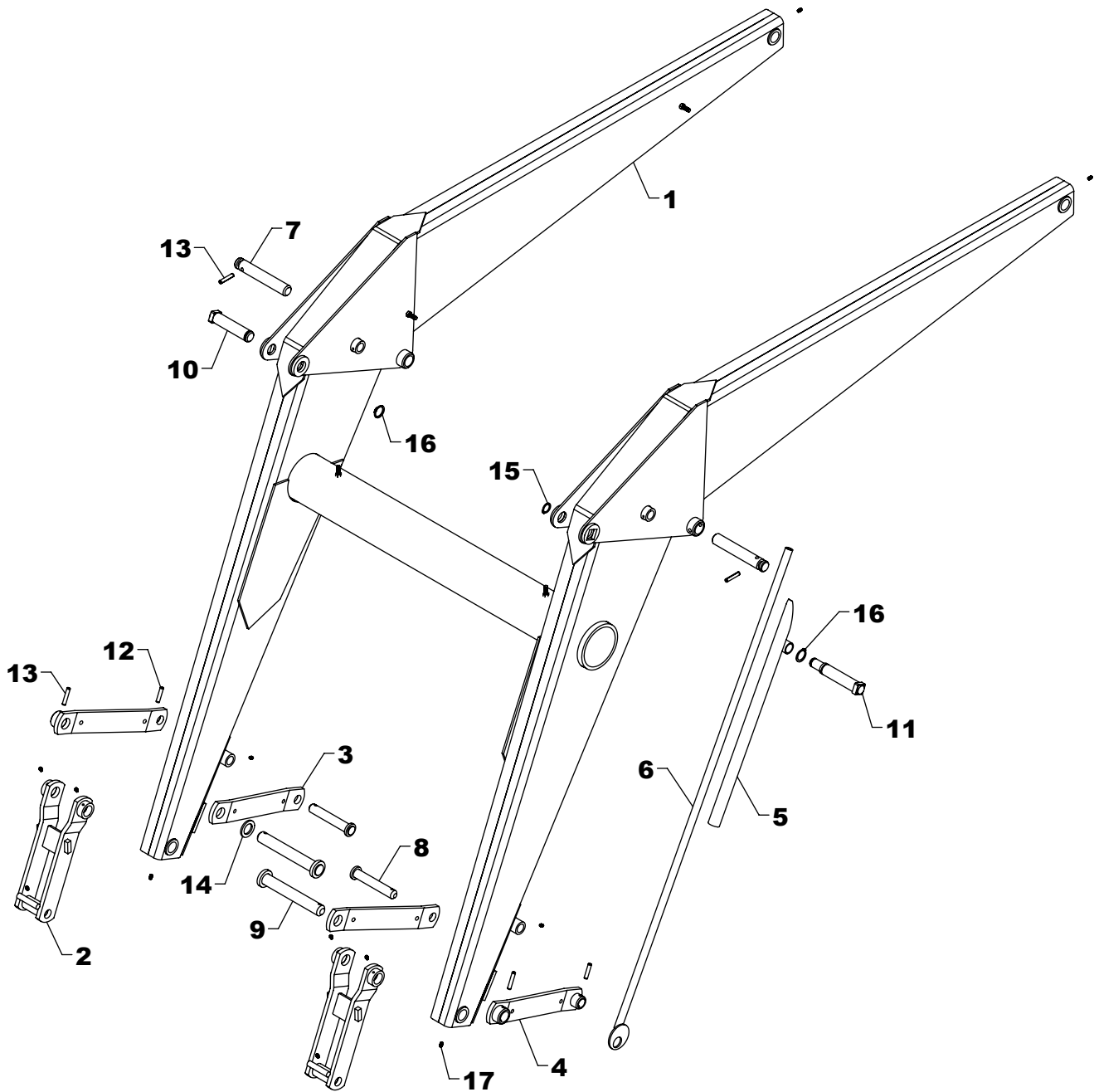


TA-46 LOADER TOWER REPLACEMENT PARTS

REF #	PART #	DESCRIPTION	QTY.
1	NAT-12AS - R	TOWER (RIGHT)	1
2	NAT-12AS - L	TOWER (LEFT)	1
--	NAT-120COM - R	SLIDE LOCK COMPLETE (RIGHT)	*
--	NAT-120COM - L	SLIDE LOCK COMPLETE (LEFT)	*
3	NAT-120AS - R	SLIDE LOCK (RIGHT)	1
4	NAT-120AS - L	SLIDE LOCK (LEFT)	1
5	RT-15AS	SHOE	2
6	0H005	FRONT WRAP	**
7	NAF-51	PIN	4
8	NAT-106 - R	DROP LOCK (RIGHT)	1

REF #	PART #	DESCRIPTION	QTY.
9	NAT-106 - L	DROP LOCK (LEFT)	1
10	NAT-126	RIVET	2
11	NAT-140	BAR CLAMP BOLT	4
12	RLG-51	SPRING	2
13	HHS1011028	5/8" X 1 3/4" BOLT	4
14	HHS1011072	5/8" X 4 1/2" BOLT	4
15	CBF1011056	5/8" X 3 1/2" CARRIAGE BOLT	4
16	LWM10	5/8" LOCK WASHER	4
17	HTN1011	5/8" LOCK NUT	12
18	DRP0600032	DOUBLE ROLL PIN	4

NOTE: *NAT-120COM - R contains 3, 8, 10, 11 (2), 12, 15 (2), & 17 (4). NAT-120COM - L contains 4, 9, 10, 11 (2), 12, 15 (2), & 17 (4).
 **Varies by tractor (standard Front Wrap is 0H005).



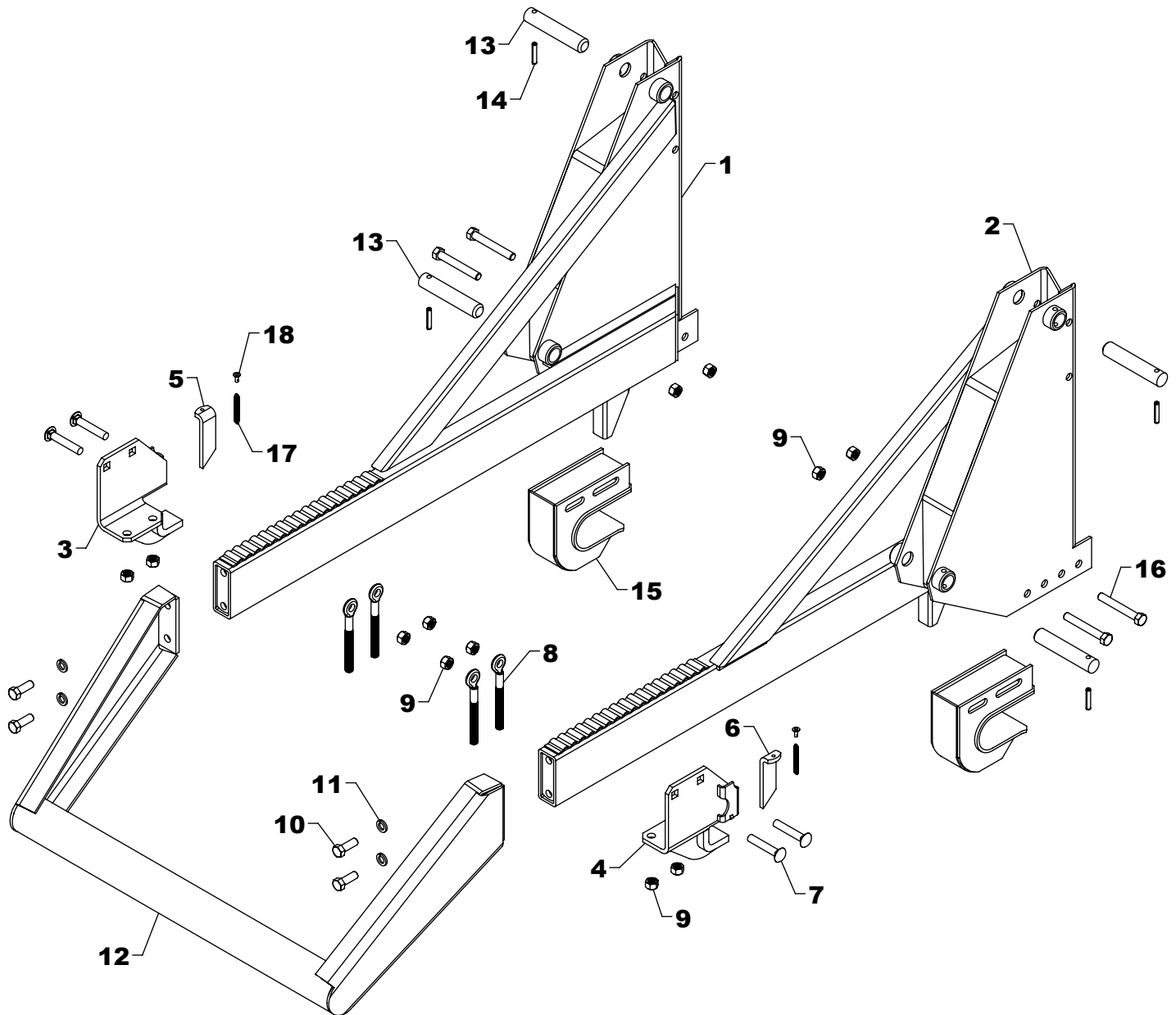
TA-46 / TA-46A LOADER FRAME REPLACEMENT PARTS

REF #	PART #	DESCRIPTION	QTY
1	NAF-4AS	FRAME	1
2	NAF-15AS	LINKAGE CONNECTOR	2
3	NAF-10	BUCKET PIVOT	2
4	NAF-10AS	BUCKET PIVOT	2
5	LMF-31AS	GAUGE ROD HOLDER	1
6	LMF-47AS	GAUGE ROD	1
7	LF-83	LIFT PIN	2
8	LMF-28AS	PIVOT PIN	2
9	LMF-125AS	ROUND HEAD PIN	2

REF #	PART #	DESCRIPTION	QTY
10	NAF-52AS	BUCKET CYLINDER PIN	1
11	NAF-53AS	GAUGE ROD HOLDER PIN	1
12	DRP0600028	DOUBLE ROLL PIN	2
13	DRP0600032	DOUBLE ROLL PIN	4
14	NAF-217	SPACER	1
15	SR-C08	SNAP RING	1
16	SR-C10	SNAP RING	2
17	ZER1805	GREASE FITTING	12

WESTENDORFMFG PWB313290

WESTENDORF MFG. CO., INC. • PH:(712) 423-2762 • FAX: (712) 423-1460 • sales@westendorfmfg.com • www.loaders.com



TA-46A LOADER TOWER REPLACEMENT PARTS

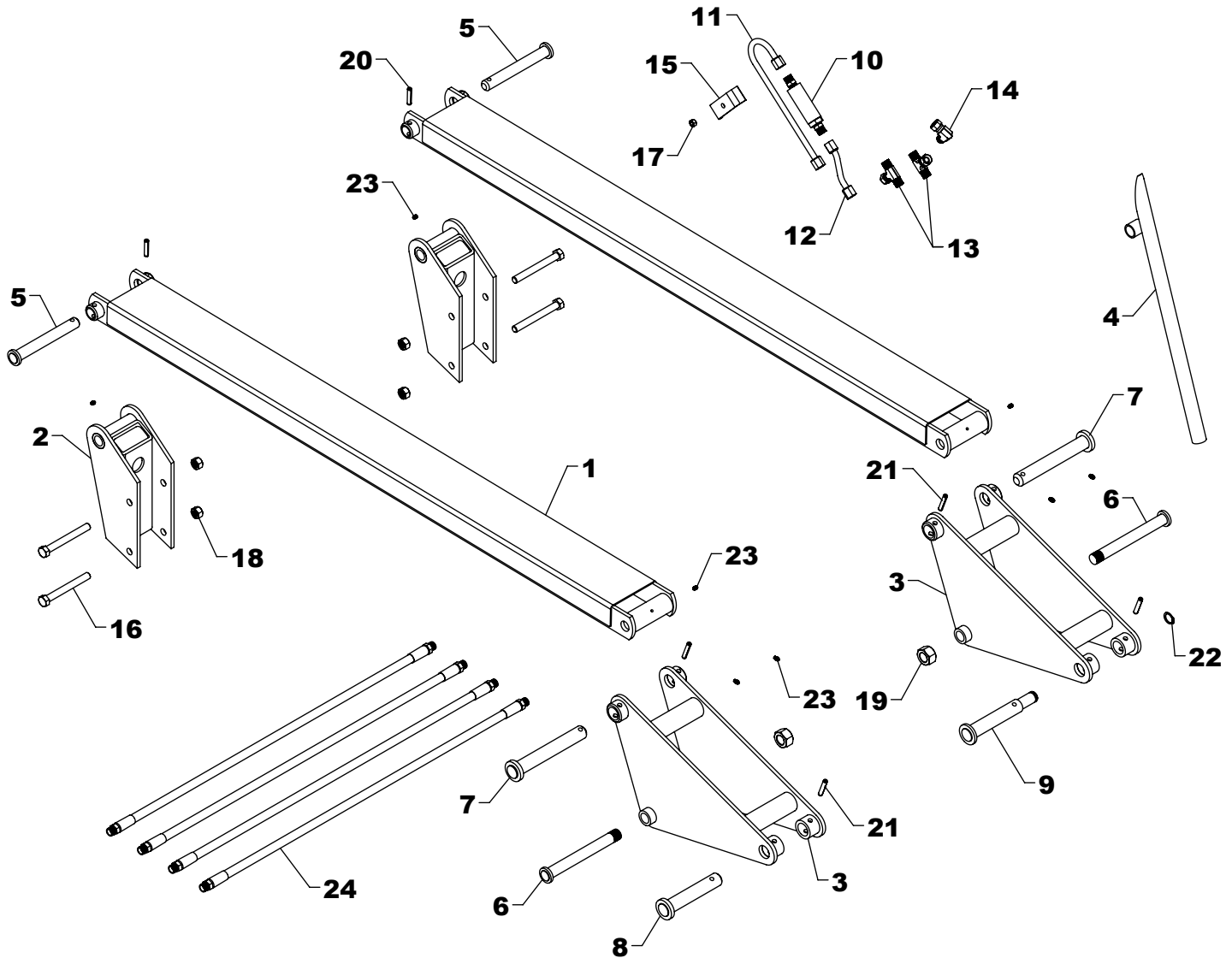
REF #	PART #	DESCRIPTION	QTY.
1	NAT-112AS - R	TOWER (RIGHT)	1
2	NAT-112AS - L	TOWER (LEFT)	1
--	NAT-120COM - R	SLIDE LOCK COMPLETE (RIGHT)	*
--	NAT-120COM - L	SLIDE LOCK COMPLETE (LEFT)	*
3	NAT-120AS - R	SLIDE LOCK (RIGHT)	1
4	NAT-120AS - L	SLIDE LOCK (LEFT)	1
5	NAT-106 - R	DROP LOCK (RIGHT)	1
6	NAT-106 - L	DROP LOCK (LEFT)	1
7	CBF1011056	5/8" X 3 1/2" CARRIAGE BOLT	4
8	NAT-140	BAR CLAMP BOLT	4

REF #	PART #	DESCRIPTION	QTY.
9	HTN1011	5/8" LOCK NUT	12
10	HHS1011028	5/8" X 1 3/4" BOLT	4
11	LWM10	5/8" LOCK WASHER	4
12	0H010	FRONT WRAP	**
13	NAF-51	PIN	4
14	DRP0600032	DOUBLE ROLL PIN	4
15	RT-15AS	SHOE	2
16	HHS1011072	5/8" X 4 1/2" BOLT	4
17	RLG-51	SPRING	2
18	NAT-126	RIVET	2

NOTE: *NAT-120COM - R contains 3, 5, 7 (2), 8 (2), 9 (4), 17, & 18. NAT-120COM - L contains 4, 6, 7 (2), 8 (2), 9 (4), 17, & 18.
 **Varies by tractor (standard Front Wrap is 0H010).

WESTENDORFMFG PWB313290

WESTENDORF MFG CO., INC. • PH: (712) 423-2762 • FAX: (712) 423-1460 • sales@westendorfmfg.com • www.loaders.com



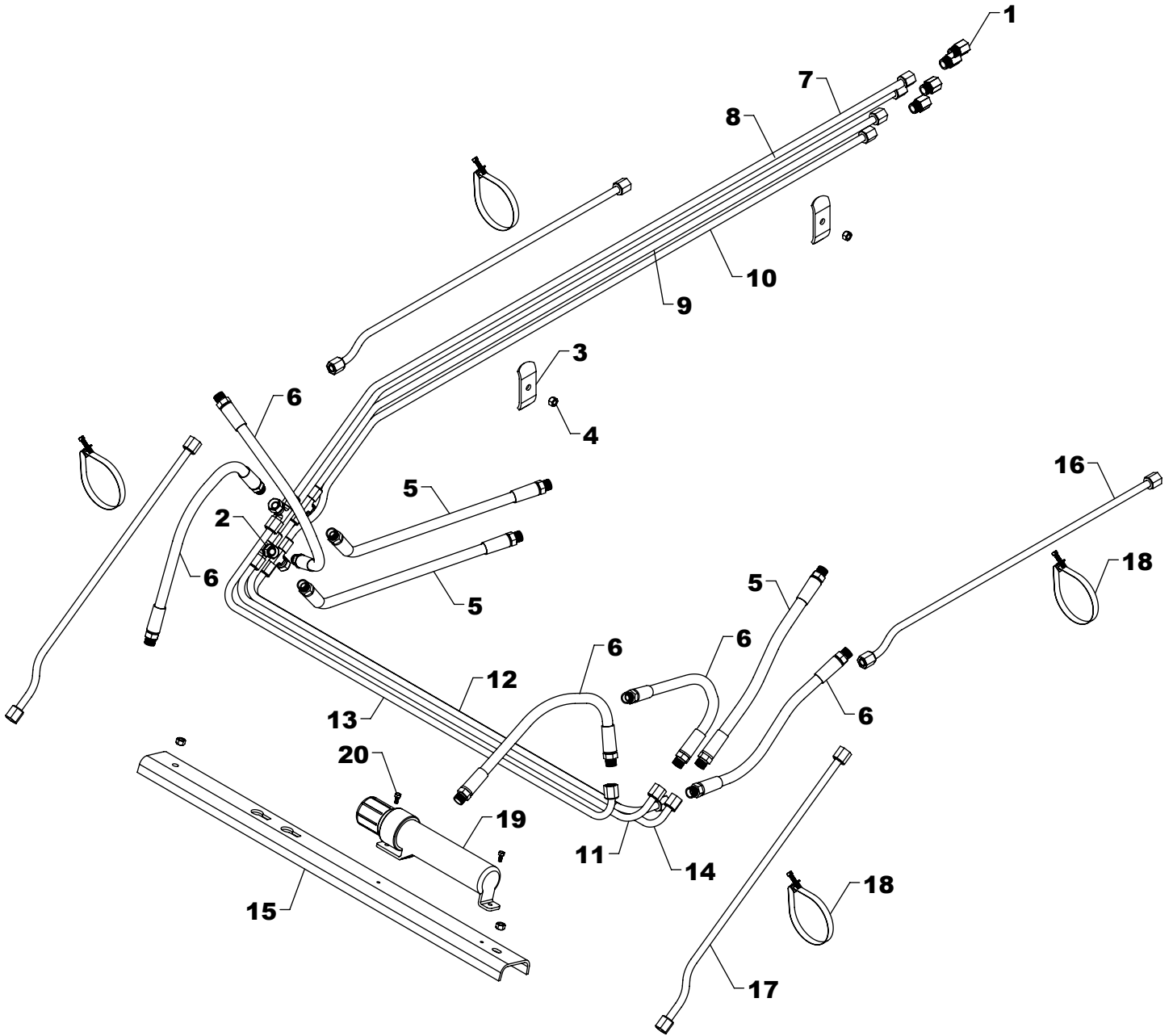
OPTIONAL ADD-ON SELF LEVELING KIT FOR TA-46 / TA-46A

KSL-2			
REF #	PART #	DESCRIPTION	QTY
1	NAF-23AS	SELF LEVELING TOP LINKAGE	2
2	NAT-36AS	SELF LEVELING BRACKET	2
3	NAF-29AS	SELF LEVELING HINGE PLATE	2
4	LMF-131AS	GAUGE ROD HOLDER	1
5	NAF-80AS	PIN	2
6	LMF-24AS	ROUND HEAD BOLT	2
7	LMF-125AS	ROUND HEAD PIN	2
8	NAF-56AS	PIN	1
9	NAF-57AS	GAUGE ROD PIN S.L.	1
10	SLV-1	RELIEF VALVE	1
11	OLT-22	HOOK OIL LINE	1
12	OLT-159	OFFSET OIL LINE	1

KSL-2			
REF #	PART #	DESCRIPTION	QTY
13	PF-FSBT8	SWIVEL NUT TEE	2
14	PF-FSE8	90° SWIVEL NUT ELBOW	1
15	OH-5	OIL LINE HOLDER CLAMP	1
16	HHS1011088	5/8" X 5 1/2" BOLT	4
17	HTN0616	3/8" LOCK NUT	1
18	HTN1011	5/8" LOCK NUT	4
19	HFN1614	1" NUT	2
20	DRP0600028	DOUBLE ROLL PIN	2
21	DRP0600032	DOUBLE ROLL PIN	4
22	SR-C08	SNAP RING	1
23	ZER1805	GREASE FITTING	8
24	H06040-FF	3/8" X 40" HOSE	4

WESTENDORFMFG PWB313290

WESTENDORF MFG CO., INC. • PH: (712) 423-2762 • FAX: (712) 423-1460 • sales@westendorfmfg.com • www.loaders.com



TA-46 / TA-46A HYDRAULICS

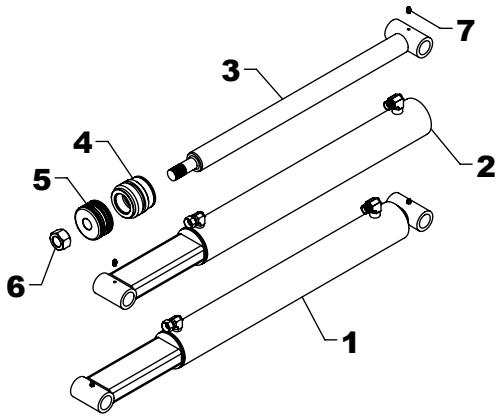
REF #	PART #	DESCRIPTION	QTY
1	PF-FFC8	FEMALE CONNECTOR	4
2	PF-FSBT8	SWIVEL NUT TEE	4
3	OH-3	OIL LINE HOLDER	2
4	HTN0616	3/8" LOCK NUT	4
5	H06020-FF	3/8" X 20" HOSE	3
6	H06030-FF	3/8" X 30" HOSE	5
7	OLT-137	OIL LINE	1
8	OLT-139	OIL LINE	1
9	OLT-136	OIL LINE	1
10	OLT-138	OIL LINE	1

REF #	PART #	DESCRIPTION	QTY
11	OLT-140	OIL LINE	1
12	OLT-141	OIL LINE	1
13	OLT-142	OIL LINE	1
14	OLT-144	OIL LINE	1
15	OH-1	OIL LINE PROTECTOR	1
16	OLT-2	OIL LINE	2
17	OLT-1	OIL LINE	2
18	BAND-15	METAL BAND	4
19	GP-2	MANUAL CANISTER	1
20	EC-M03	SELF TAPPING SCREW	2

WESTENDORFMFG PWB313290

WESTENDORF MFG. CO., INC. • PH: (712) 423-2762 • FAX: (712) 423-1460 • sales@westendorfmfg.com • www.loaders.com

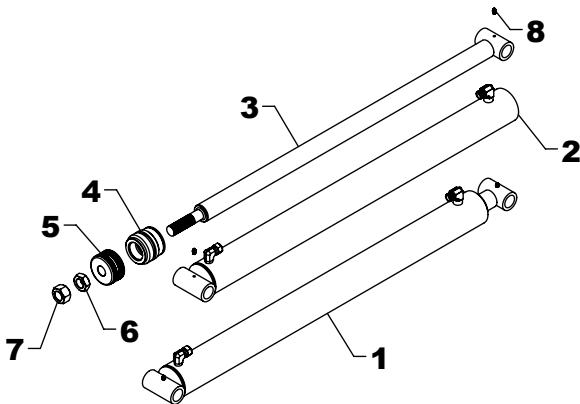
TA-45 / TA-46 / TA-46A BUCKET CYLINDER REPLACEMENT PARTS



REF #	PART #	DESCRIPTION	QTY
1	B-24	BUCKET CYLINDER	1
2	B-2401	BARREL	1
3	B-2410	RAM	1
4	G-L	GLAND	1
5	P-B	PISTON	1
6	HFN1614	1" NUT	1
7	ZER1805	GREASE FITTING	2
8	#4CK	REPAIR KIT	*

NOTE: * Repair kit contains parts to repair one cylinder

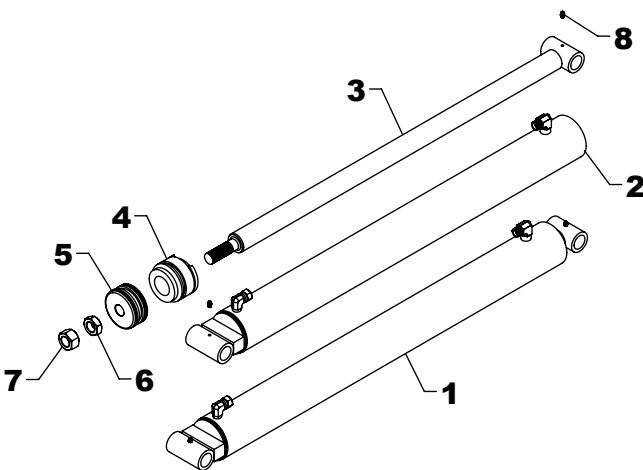
TA-46 / TA-46A / TA-48 3" LIFT CYLINDER REPLACEMENT PARTS



REF #	PART #	DESCRIPTION	QTY.
1	L-24	LIFT CYLINDER	1
2	L-2401	BARREL	1
3	L-2410	RAM	1
4	G-L	GLAND	1
5	P-B	PISTON	1
6	HJN1614	1" JAM NUT	1
7	HFN1614	1" NUT	1
8	ZER1805	GREASE FITTING	2
9	#4CK	REPAIR KIT	*

NOTE: * Repair kit contains parts to repair one cylinder

TA-46 / TA-46A OPTIONAL 3 1/2" LIFT CYLINDER REPLACEMENT PARTS



REF #	PART #	DESCRIPTION	QTY.
1	L-36	LIFT CYLINDER	1
2	L-3601	BARREL	1
3	L-3610	RAM	1
4	G-P	GLAND	1
5	P-I	PISTON	1
6	HJN1614	1" JAM NUT	1
7	HFN1614	1" NUT	1
8	ZER1805	GREASE FITTING	2
9	#33CK	REPAIR KIT	*

NOTE: * Repair kit contains parts to repair one cylinder

STEPS TO REPAIR CYLINDER

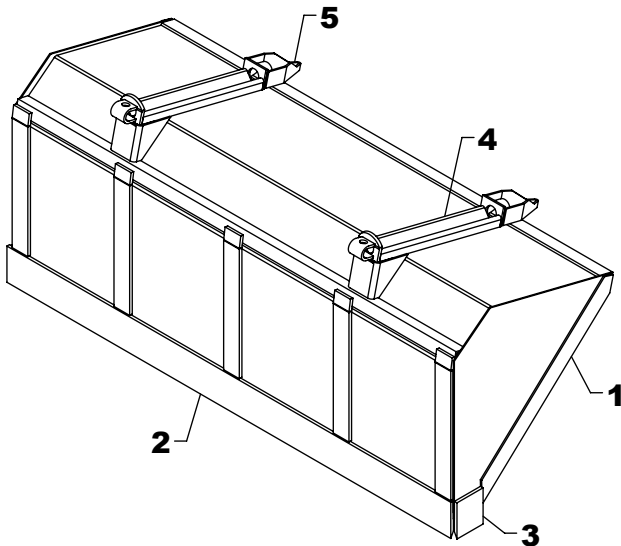
- 1) With ram fully extended, remove snap ring or spiral retaining ring from gland at barrel end of cylinder.
 - SNAP RING: Rotate gland until snap ring eyes are visible. Compress with snap ring pliers to remove.
 - RETAINING RING: Gently drive gland into the barrel using a non marring punch to remove retaining ring with a long nose pliers.
- 2) Remove ram assembly (ram, gland, and piston) from barrel.
- 3) Remove piston and gland from ram; be sure to notice the direction they are facing so cylinder can be reassembled properly.

- 4) Remove old seals and rings and replace them with new seals and rings (you may have extra parts as kits are packaged for multiple cylinders).
- 5) Clean cylinder with cleaner and a lint free cloth.
- 6) Lubricate seals and rings and reassemble cylinder in reverse order.

REPAIR TIPS

- Remove parts in sequence and keep in correct orientation during disassembly.
- Notice the direction of piston and gland. Lay out old seals and rings as they are removed.
- Assemble the cylinder in proper order; lubricate to aid assembly.

WESTENDORF MFG PWB313290

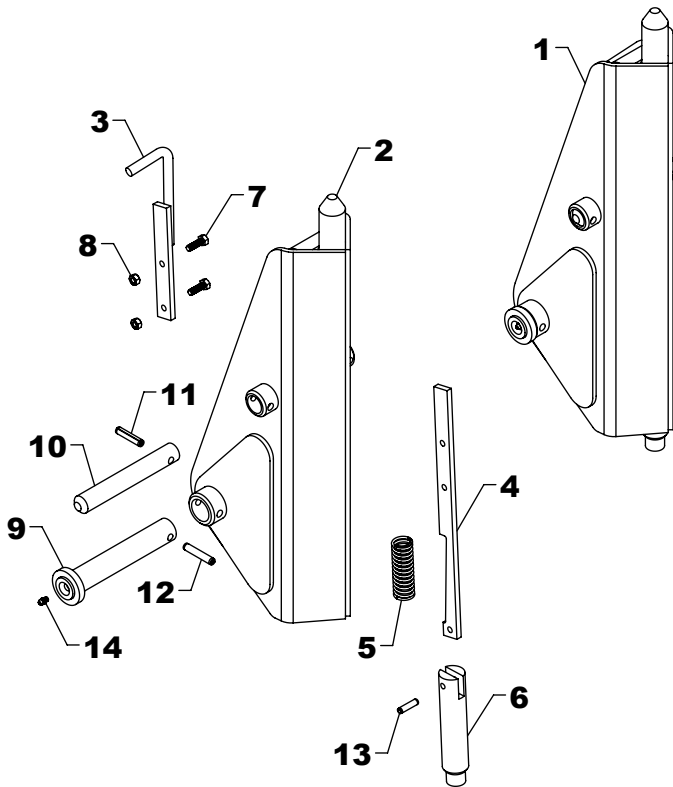


TA-45 / TA-46 TA-46A / TA-48 BUCKET

REF #	PART #	DESCRIPTION	QTY.
1	84Q425	84" BUCKET	1
	90Q425	90" BUCKET	1
	96Q429	96" BUCKET	1
2	SB-14	84" BLADE	1
	LB-14	90" BLADE	1
	CB-14	96" BLADE	1
3	SB-15	BLADE	2
4	QC-13AS	WELD ON ADAPTER	2
5	JB-22	GUIDE (OPTIONAL)	2

NOTE: *Check width of the bucket and use the part number that matches. If your size is not shown, contact Westendorf Mfg. Co.

TA-45 / TA-46 / TA-46A / TA-48 SNAP-ATTACH™ COUPLER (C-4B)



REF #	PART #	DESCRIPTION	QTY
1	QC-1201COM	SNAP ATTACH	1
2	QC-1201AS	MALE COUPLER	1
3	QC-6AS	LATCH HANDLE	1
4	QC-8	LATCH	1
5	QC-12	SPRING	1
6	QC-3	BOTTOM LATCH PIN	1
7	HHS0518016	5/16" X 1" BOLT	2
8	HTN0518	5/16" LOCK NUT	2
9	XAF-55AS	LINKAGE PIN	1
10	LF-51	LINKAGE PIN	1
11	DRP0600028	DOUBLE ROLL PIN	1
12	DRP0600032	DOUBLE ROLL PIN	1
13	RLP0500020	5/16" X 1 1/4" ROLL PIN	1
14	ZER1805	GREASE FITTING	1

NOTE: Qty. shows number of parts received if ordered using listed part numbers.
C-4B is two (QC-1201COM) couplers.

TA-45 / TA-46 / TA-46A / TA-48 COSMETICS

REF #	PART #	DESCRIPTION	QTY.
1	DEC-45	DECAL KIT (TA-45)	1
	DEC-46	DECAL KIT (TA-46 / TA-46A)	1
	DEC-48	DECAL KIT (TA-48)	1
2	V-5403-A	RED SPRAY PAINT	1
	V-9524-A	BLACK SPRAY PAINT	1

REF #	PART #	DESCRIPTION	QTY
3	V-9524-P	PINT BLACK PAINT	1
4	V-9524-Q	QUART BLACK PAINT	1
5	V-9524-G	GALLON BLACK PAINT	1

NOTE: Warning decals are available at no charge. If they become damaged or missing, order part numbers DE-LDI, DE-DWWS, DE-WWWS, DE-TA7, DE-PP, DE-QC, DE-QCC.

WESTENDORFMFG PWB313290