

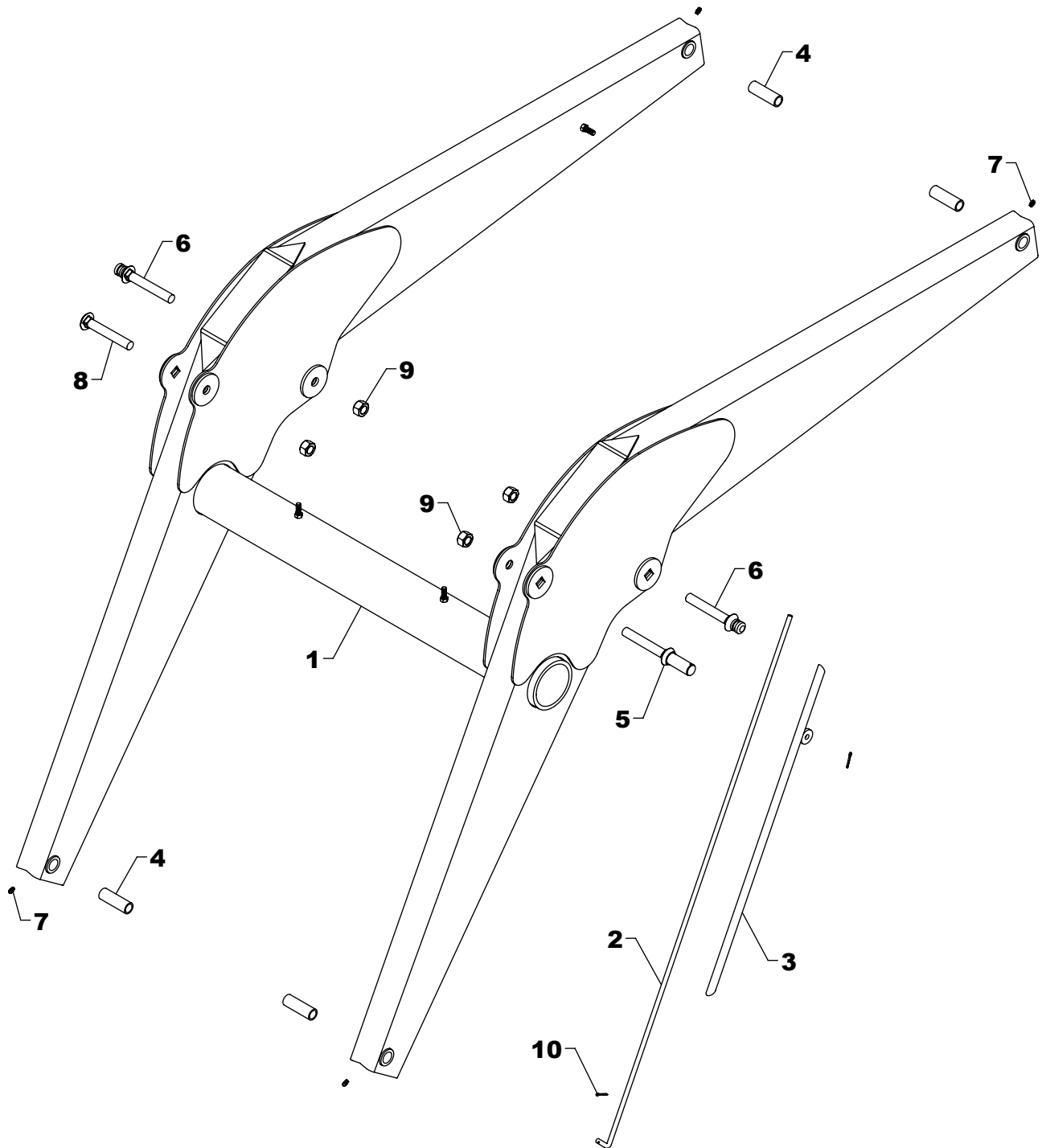
TA-25 LOADER TOWER REPLACEMENT PARTS

REF #	PART #	DESCRIPTION	QTY.
1	RT-12AS - R	TOWER (RIGHT)	1
2	RT-12AS - L	TOWER (LEFT)	1
3	RT-15AS	SHOE	2
4	RT-20AS - R	SLIDE LOCK (RIGHT)	1
5	RT-20AS - L	SLIDE LOCK (LEFT)	1
6	RT-5	LATCH	2
7	RT-27	LATCH RIVOT	2
8	0H004	*FRONT WRAP	1
9	MT-232	WASHER	2
10	QC-806	WASHER	2
11	HHS1011028	5/8" X 1 3/4" BOLT	4

REF #	PART #	DESCRIPTION	QTY.
12	CBF1011072	5/8" X 4 1/2" CARRIAGE BOLT	4
13	CBF1210080	3/4" X 5" CARRIAGE BOLT	4
14	AHS0813010	1/2" X 5/8" SET SCREW	4
15	AHS0813016	1/2" X 1" SET SCREW	2
16	LWM10	5/8" LOCK WASHER	4
17	HTN1011	5/8" LOCK NUT	4
18	HTN1210	3/4" LOCK NUT	4
19	FWW12	3/4" FLAT WASHER	2
20	GP-2	MANUAL CANISTER	1
21	EC-M03	SELF TAPPING SCREW	2

WESTENDORFMFG PWB416140

NOTE: *Varies by Tractor (Standard Front Wrap is 0H004)



TA-25 LOADER FRAME REPLACEMENT PARTS

REF #	PART #	DESCRIPTION	QTY.
1	RF-4AS	FRAME	1
2	RF-49	INNER GAUGE ROD	1
3	MF-50AS	GAUGE ROD HOLDER	1
4	B-930	INSERT BUSHING	4
5	RF-69AS	GAUGE ROD PIN	1

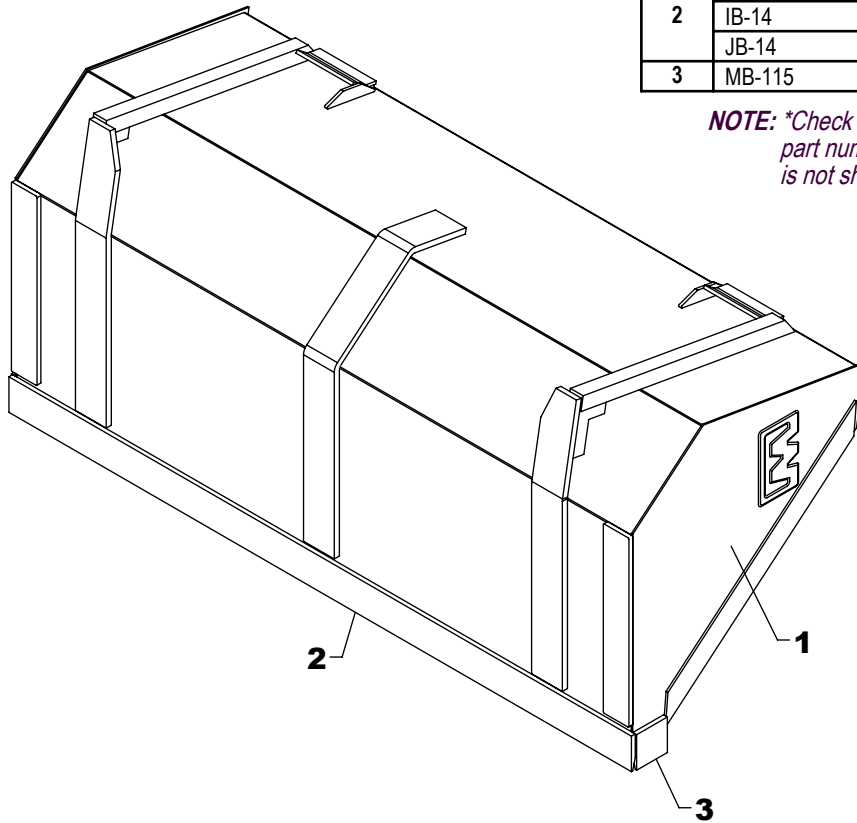
REF #	PART #	DESCRIPTION	QTY.
6	LF-85AS	LIFT PIN	2
7	ZER1805	GREASE FITTING	4
8	CBF1210080	3/4" X 5" CARRIAGE BOLT	1
9	HTN1210	3/4" LOCK NUT	4
10	CTK0200016	1/8" X 1" COTTER KEY	2

WESTENDORFMFG PWB416140

BUCKET

REF #	PART #	DESCRIPTION	QTY.
1	60Q512	60" BUCKET	1
	72Q514	72" BUCKET	1
	66QS14	66" SKID STEER BUCKET	1
	72QS15	72" SKID STEER BUCKET	1
2	MB-114	60" BLADE	1
	IB-14	BLADE	1
	JB-14	72" BLADE	1
3	MB-115	SIDE BLADE	2

NOTE: *Check width of the bucket and use the part number that matches. If your size is not shown, contact Westendorf Mfg. Co.



COSMETICS

REF #	PART #	DESCRIPTION	QTY.
1	DEC-25	DECAL KIT	1
2	V-9524-A	STONE BLACK SPRAY PAINT	1
3	V-9524-P	PINT STONE BLACK PAINT	1

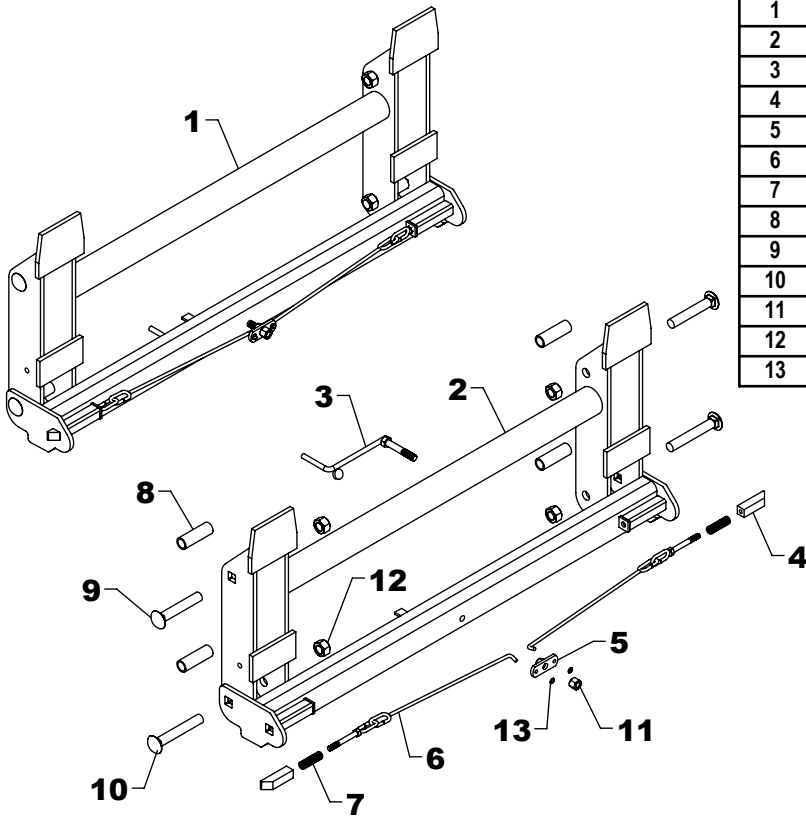
REF #	PART #	DESCRIPTION	QTY
4	V-9524-Q	QUART STONE BLACK PAINT	1
5	V-9524-G	GALLON STONE BLACK PAINT	1

NOTE: Warning decals are available at no charge. If they become damaged or missing, order part number DEC-CW.

WESTENDORFMFG PWB416140

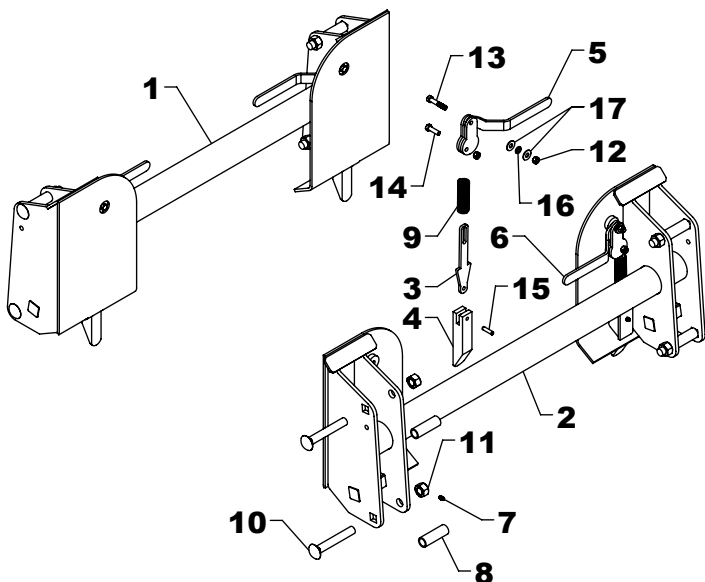
COUPLER (C-9)

REF #	PART #	DESCRIPTION	QTY
1	C-9	COUPLER COMPLETE	1
2	QC-901AS	COUPLER	1
3	QC-911AS	HANDLE	1
4	QC-914	BAR CATCH	2
5	QC-915AS	LOCK PIVOT PLATE	1
6	QC-917AS	LATCH ROD	2
7	QC-920	SPRING	2
8	B-930	INSERT BUSHING	4
9	CBF1210072	3/4" X 4 1/2" CARRIAGE BOLT	2
10	CBF1210080	3/4" X 5" CARRIAGE BOLT	2
11	HTN0813	1/2" LOCK NUT	1
12	HTN1210	3/4" LOCK NUT	4
13	SR-E02	RETAINING RING	2



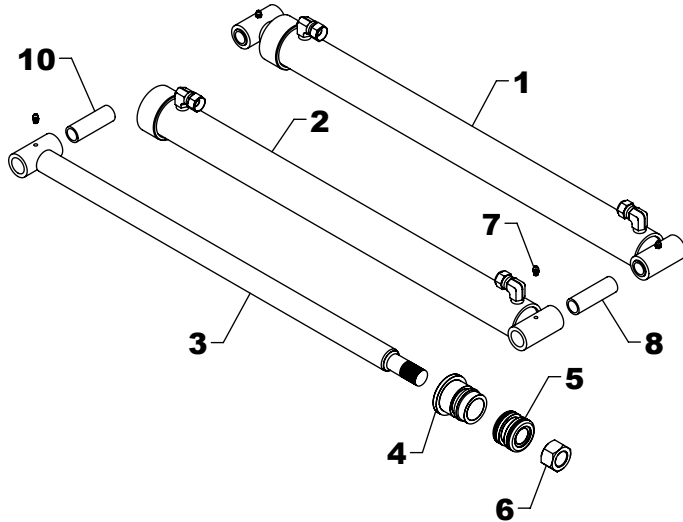
OPTIONAL SKID STEER COUPLER (C-20)

REF #	PART #	DESCRIPTION	QTY
1	C-20	COUPLER	1
2	QC-2000AS	COUPLER	1
3	QC-2010	LINKAGE	2
4	QC-2011	LATCH	2
5	QC-2007AS - L	HANDLE (LEFT)	1
6	QC-2007AS - R	HANDLE (RIGHT)	1
7	ZER1805	GREASE FITTING	2
8	B-930	INSERT BUSHING	4
9	QC-12	SPRING	2
10	CBF1210080	3/4" X 5" CARRIAGE BOLT	4
11	HTN1210	3/4" LOCK NUT	4
12	HTN0616	3/8" LOCK NUT	4
13	HHS0616032	3/8" X 2" BOLT	2
14	HHS0616020	3/8" X 1 1/4" BOLT	2
15	RLP0500020	5/16" X 1 1/4" ROLL PIN	2
16	LWM06	3/8" LOCK WASHER	2
17	FWW06	3/8" FLAT WASHER	4



WESTENDORFMFG PWB416140

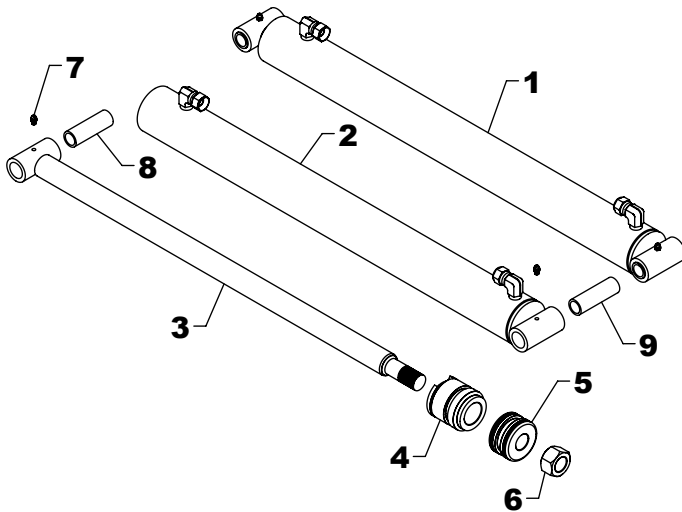
TA-25 BUCKET CYLINDER REPLACEMENT PARTS



REF #	PART #	DESCRIPTION	QTY
1	B-9	BUCKET CYLINDER	1
2	B-901	BARREL	1
3	B-910	RAM	1
4	G-H	GLAND	1
5	P-C	PISTON	1
6	HFN1614	1" NUT	1
7	ZER1805	GREASE FITTING	2
8	B-931	INSERT BUSHING	1
9	#7CK	REPAIR KIT	1
10	B-930	INSERT BUSHING	1

NOTE: * Seal kit contains parts to repair one cylinder

TA-25 LIFT CYLINDER REPLACEMENT PARTS



REF #	PART #	DESCRIPTION	QTY
1	L-23	LIFT CYLINDER	1
2	L-2301	BARREL	1
3	B-910	RAM	1
4	G-A	GLAND	1
5	P-A	PISTON	1
6	HFN1614	1" NUT	1
7	ZER1805	GREASE FITTING	2
8	B-930	INSERT BUSHING	1
9	B-931	INSERT BUSHING	1
10	#1CK	REPAIR KIT	1

NOTE: * Seal kit contains parts to repair one cylinder

STEPS TO REPAIR CYLINDER

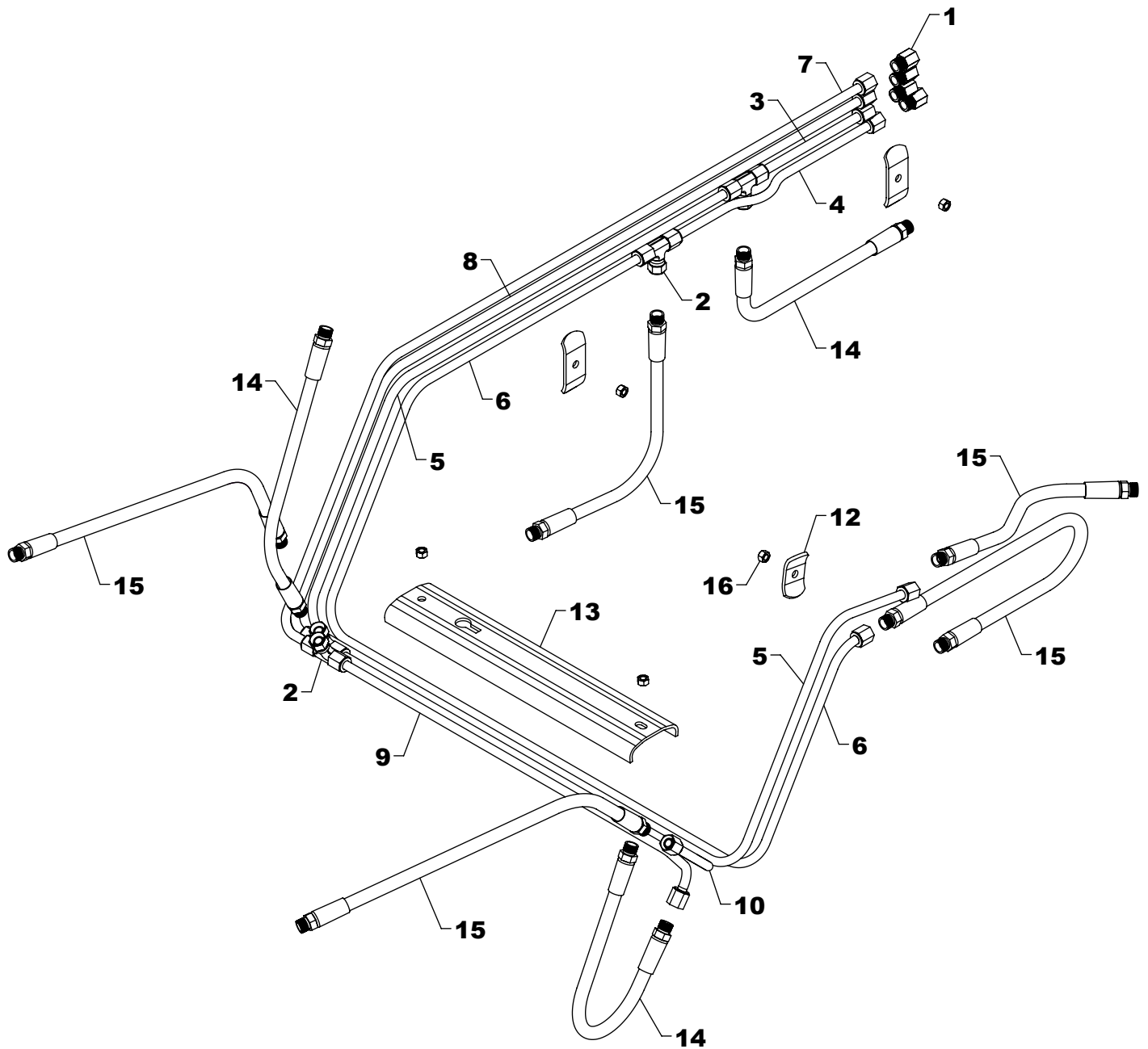
- 1) With ram fully extended, remove snap ring or spiral retaining ring from gland at barrel end of cylinder.
 - SNAP RING: Rotate gland until snap ring eyes are visible. Compress with snap ring pliers to remove.
 - RETAINING RING: Gently drive gland into the barrel using a non marring punch to remove retaining ring with a long nose pliers.
- 2) Remove ram assembly (ram, gland, and piston) from barrel.
- 3) Remove piston and gland from ram; be sure to notice the direction they are facing so cylinder can be reassembled properly.

- 4) Remove old seals and rings and replace them with new seals and rings (you may have extra parts as kits are packaged for multiple cylinders).
- 5) Clean cylinder with cleaner and a lint free cloth.
- 6) Lubricate seals and rings and reassemble cylinder in reverse order.

REPAIR TIPS

- Remove parts in sequence and keep in correct orientation during disassembly.
- Notice the direction of piston and gland. Lay out old seals and rings as they are removed.
- Assemble the cylinder in proper order; lubricate to aid assembly.

WESTENDORFMFG PWB416140



TA-25 HYDRAULICS

REF #	PART #	DESCRIPTION	QTY.
1	PF-FFC8	FEMALE CONNECTOR	4
2	PF-FSBT8	SWIVEL NUT TEE	4
3	OLT-128	OIL LINE	1
4	OLT-129	OIL LINE	1
5	OLT-130	OIL LINE	1
6	OLT-131	OIL LINE	1
7	OLT-132	OIL LINE	1
8	OLT-133	OIL LINE	1

REF #	PART #	DESCRIPTION	QTY.
9	OLT-134	OIL LINE	1
10	OLT-135	OIL LINE	1
11	OH-3	OIL LINE HOLDER	2
12	OH-6	OIL LINE HOLDER	1
13	OH-9	OIL LINE HOLDER	1
14	H06020-FF	3/8" X 20" HOSE	3
15	H06030-FF	3/8" X 30" HOSE	5
16	HTN0616	3/8" LOCK NUT	5

WESTENDORFMFG PWB416140