

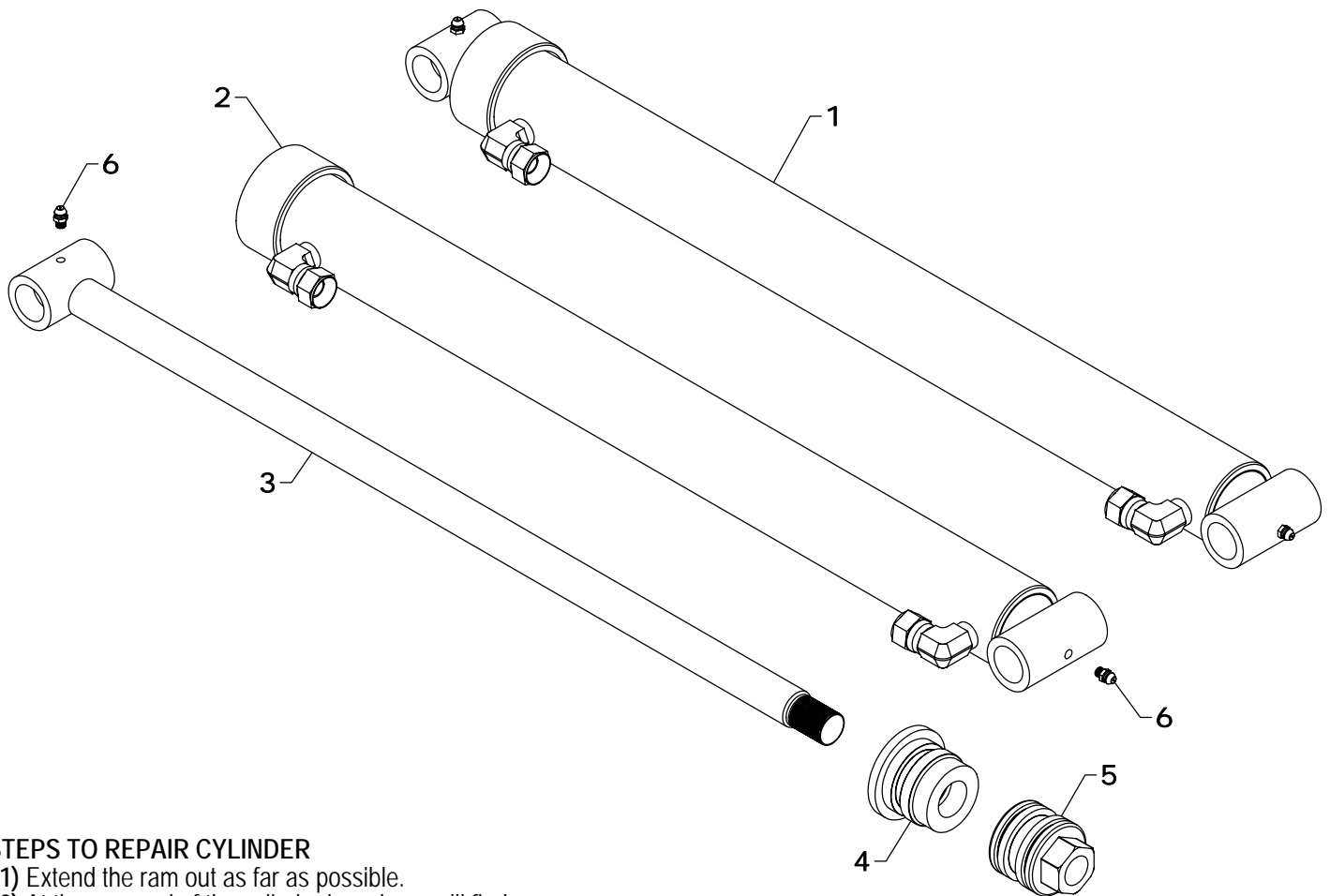
TA-111 / TA-111A LOADER REPLACEMENT PARTS

REF #	PART #	DESCRIPTION	QTY.
1	MT-212AS	TOWER (TA-111)	1
	MT-312AS	TOWER (TA-111A)	1
2	MF-204AS	FRAME	1
3	MF-50AS	GAUGE ROD HOLDER	1
4	MF-149	GAUGE ROD	1
5	CBF1210064	3/4" X 4" CARRIAGE BOLT	4
6	HTN1210	3/4" LOCK NUT	12
7	MF-230	INSERT BUSHING	8
8	LF-84AS	LIFT PIN	2
9	MF-69AS	GAUGE ROD BOLT	1
10	CTK0200016	1/8" X 1" COTTER KEY	2
11	ZER1805	GREASE FITTING	4
12	CBF1210072	3/4" X 4 1/2" CARRIAGE BOLT	5
13	QC-801AS	COUPLER	1

REF #	PART #	DESCRIPTION	QTY.
14	QC-811AS-L	LATCH (LEFT)	1
15	QC-811AS-R	LATCH (RIGHT)	1
16	SBC0616024	3/8" X 1 1/2" FLAT HEAD BOLT	2
17	HFN0616	3/8" NUT	4
18	48Q107	48" BUCKET	*
	60Q109-SB	60" TAPERED BUCKET	*
	66QS14	66" SKID STEER BUCKET	*
19	MB-214	48" BLADE	*
	MB-114	60" BLADE	*
20	MB-115	SIDE BLADE	2
21	DEC-111	DECAL KIT (NOT SHOWN)	1
22	B-1531	INSERT BUSHING	4
23	C-22	SKID STEER COUPLER (OPTION)	1

NOTE: *Check width of the bucket and use the part number that matches. If your size is not shown, contact Westendorf Mfg. Co.

NOTE: C-8 Coupler includes 7 (4), 13 (1), 14 (1), 15 (1), 16 (2), and 17 (4).



STEPS TO REPAIR CYLINDER

- 1) Extend the ram out as far as possible.
- 2) At the ram end of the cylinder barrel you will find a snap ring located either on the face of the gland or inside the notch of the gland.
- 3) Locate the snap ring eyes (you may need to turn the gland inside the barrel to find the snap ring eyes).
Compress the snap ring with snap ring pliers.
- 4) Remove the ram assembly (ram, gland, & piston) from barrel.
- 5) Notice the direction they are pointing so they can be properly re-assembled.
- 6) Remove the piston and gland from the ram.
- 7) Remove the old seals and rings and replace them with the new seals and rings. (Seal kits are packaged for several different cylinders. You may have extra parts)
- 8) Clean the cylinder with cleaner and a clean lint free cloth.
- 9) Lubricate the seals and rings to aid assembly.
- 10) Assemble the cylinder by reversing the order.

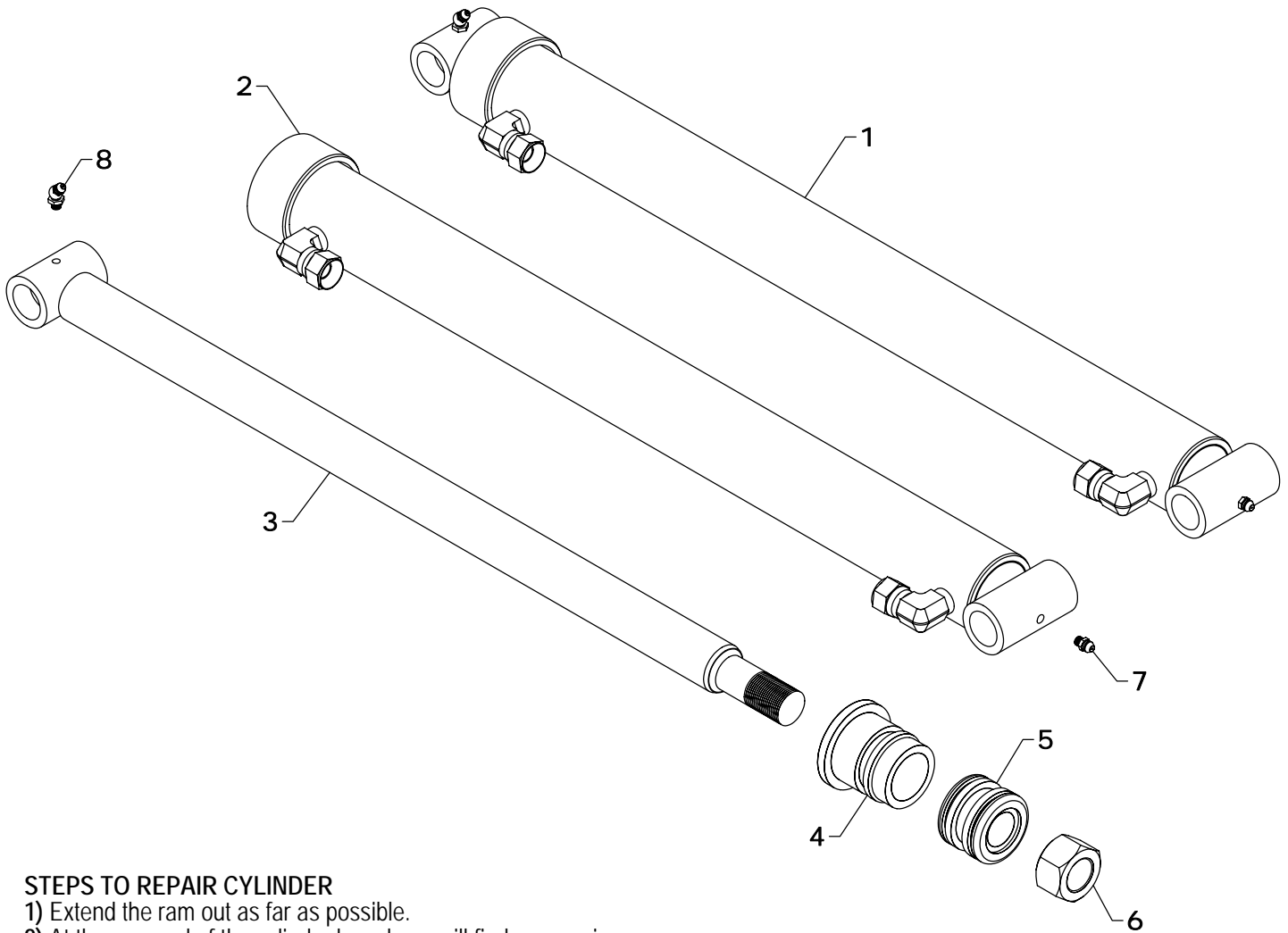
CYLINDER REPAIR TIPS

- When disassembling cylinders, keep the parts in correct orientation. Remove parts in sequence.
- Note the direction of the piston and gland. Lay out old seals and parts as they are removed.
- Assemble cylinder in proper order; lubricate to aid assembly.

BUCKET CYLINDER REPLACEMENT PARTS

REF #	PART #	DESCRIPTION	QTY.
1	B-15	BUCKET CYLINDER	1
2	B-1501	BARREL	1
3	B-1510	RAM	1
4	G-I	GLAND	1
5	P-J	PISTON	1
6	ZER1805	GREASE FITTING	2
7	#8CK	SEAL KIT	*

*NOTE: * Seal kit contains parts to repair one cylinder*



STEPS TO REPAIR CYLINDER

- 1) Extend the ram out as far as possible.
- 2) At the ram end of the cylinder barrel you will find a snap ring located either on the face or inside the notch of the gland.
- 3) Locate the snap ring eyes (you may need to turn the gland inside the barrel to find the snap ring eyes). Compress the snap ring with snap ring pliers.
- 4) Remove the ram assembly (ram, gland, & piston) from barrel.
- 5) Notice the direction they're pointing so they can be properly re-assembled.
- 6) Remove the jam nut and/or hex nut from the end of the ram.
- 7) Remove the old seals and rings and replace them with the new seals and rings. (Seal kits are packaged for several different cylinders. You may have extra parts)
- 8) Clean cylinder with cleaner and a clean lint free cloth.
- 9) Lubricate the seals and rings to aid assembly.
- 10) Assemble the cylinder by reversing the order.

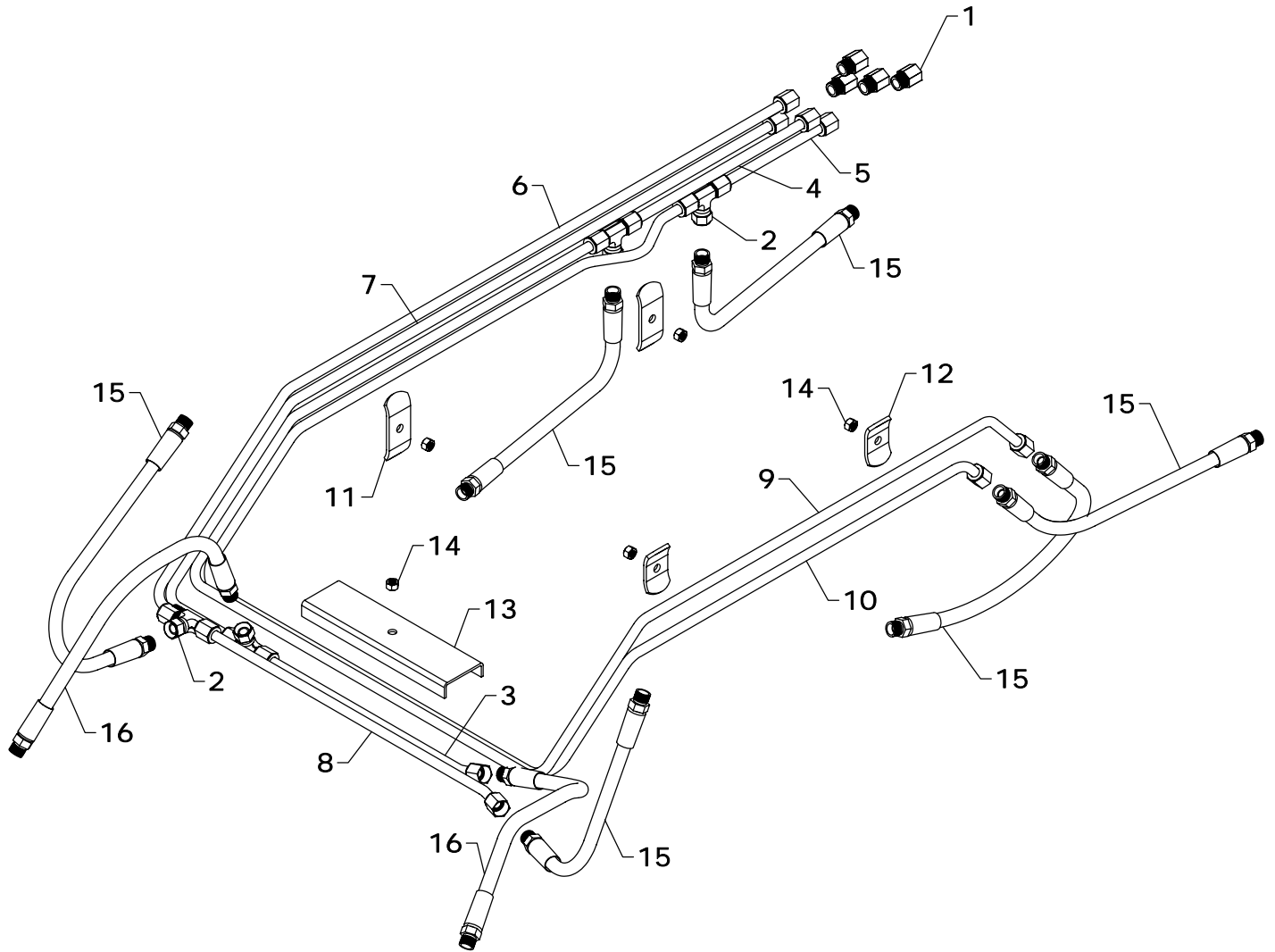
CYLINDER REPAIR TIPS

- When disassembling cylinders, keep the parts in correct orientation. Remove parts in sequence.
- Note the direction of the piston and gland. Lay out old seals and parts as they are removed.
- Assemble cylinder in proper order; lubricate to aid assembly.

LIFT CYLINDER REPLACEMENT PARTS

REF #	PART #	DESCRIPTION	QTY.
1	L-15	LIFT CYLINDER	1
2	B-1501	BARREL	1
3	L-1510	RAM	1
4	G-H	GLAND	1
5	P-C	PISTON	1
6	HFN1614	1" NUT	1
7	ZER1805	GREASE FITTING	1
8	ZER521	45° GREASE FITTING	1
9	#7CK	SEAL KIT	*

*NOTE: * Seal kit contains parts to repair one cylinder*



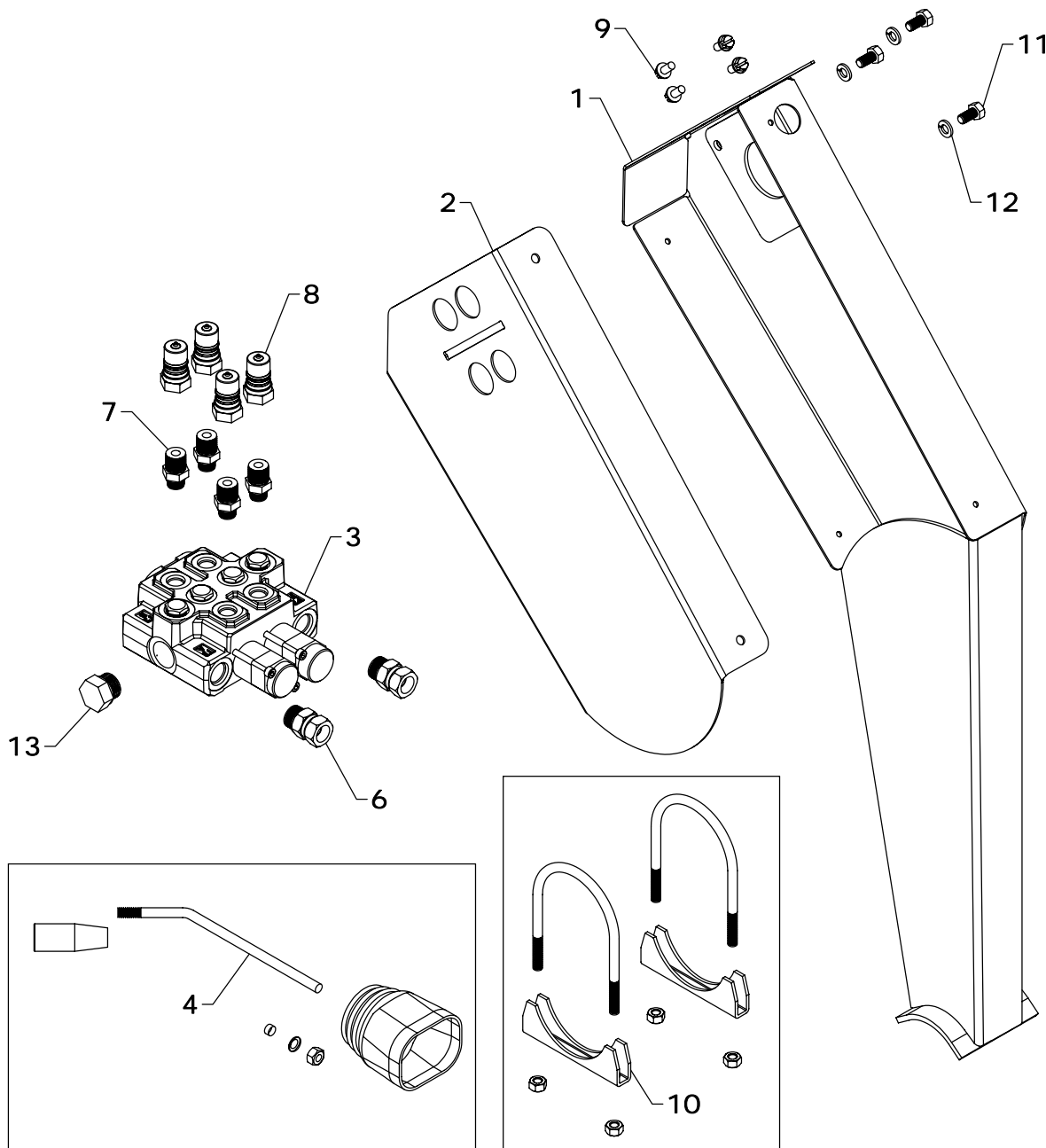
TA-111 / TA-111A HYDRAULICS

REF #	PART #	DESCRIPTION	QTY.
1	PF-FFC8	FEMALE CONNECTOR	4
2	PF-FSBT8	SWIVEL NUT TEE	4
3	OLT-100	OIL LINE	1
4	OLT-101	OIL LINE	1
5	OLT-102	OIL LINE	1
6	OLT-103	OIL LINE	1
7	OLT-104	OIL LINE	1
8	OLT-105	OIL LINE	1

REF #	PART #	DESCRIPTION	QTY.
9	OLT-106	OIL LINE	1
10	OLT-107	OIL LINE	1
11	OH-3	OIL LINE HOLDER	2
12	OH-6	OIL LINE HOLDER	2
13	OH-11	OIL LINE HOLDER	1
14	HTN0616	3/8" LOCK NUT	5
15	H06020-FF	3/8" X 20" HOSE	6
16	H06030-FF	3/8" X 30" HOSE	2

WESTENDORFMFG PWB216210

WESTENDORF MFG. CO., INC. • PH: (712) 423-2762 • FAX: (712) 423-1460 • sales@westendorfmfg.com • www.loaders.com



KVJ-15 VALVE

REF #	PART #	DESCRIPTION	QTY
1	VP-171-01	VALVE PLATE	1
2	VP-171-02	VALVE COVER	1
3	OC-2NB	VALVE	1
4	VJ-302COM	HANDLE KIT	1
5	DE-VJ1	DECAL (NOT SHOWN)	1
6	PF-OS0806	3/4-16 TO 3/8" O-RING PIPE SWIVEL ADAPTER	2
7	PF-OA06	9/16" O-Ring - 3/8" MALE ADAPTOR	4

REF #	PART #	DESCRIPTION	QTY
8	LM-110	MALE COUPLER	4
9	SHW1214008	7/32" X 1/2" HEX HEAD SCREW	4
10	EXH-72	3" EXHAUST CLAMP	2
11	HHS0518010	5/16" X 5/8" BOLT	3
12	LWM05	5/16" LOCK WASHER	3
13	PF-PO10	7/8"-14 HEX HEAD PLUG	1

NOTE: Hoses are included in the Bracket Mounting Instruction.

MANIFOLD		
PART #	DESCRIPTION	QTY
MA-26	MANIFOLD	1

WESTENDORFMFG PWB216210

WESTENDORF MFG. CO., INC. • PH:(712) 423-2762 • FAX: (712) 423-1460 • sales@westendormfg.com • www.loaders.com