

## WW2416 RUNNING GEAR REPLACEMENT PARTS

REF #	PART #	DESCRIPTION	QTY
1	AW-45COM	REAR AXLE	1
2	AW-43	CENTER REACH	1
3	AW-1COM	FRONT AXLE	1
4	ECT-124	TONGUE	1
5	HW-61	SAFETY CHAIN	1
6	ET-126	TONGUE CHAIN	1
7	S11	TONGUE SPRING	1

REF #	PART #	DESCRIPTION	QTY
8	AW-63AS	TONGUE STOP	1
9	AW-61	FRONT STOP PAD	2
10	AW-62	REAR STOP PAD	2
11	HHS0813024	1/2" X 1 1/2" BOLT	2
12	HHS0813096	1/2" X 6" BOLT	2
13	LWM08	1/2" LOCKWASHER	4
14	HFN0813	1/2" NUT	4

## RUNNING GEAR OPTIONS

PART #	DESCRIPTION
WAC-201	STAKE ACCESSORY SET
WAC-202	STAKE AND HINGE ACCESSORY SET
WAC-243	STAKE AND HINGE ACCESSORY SET
WAC-244	WAGON BOX MOUNTING KIT

Select ONE optional WAC SET at the time of purchase

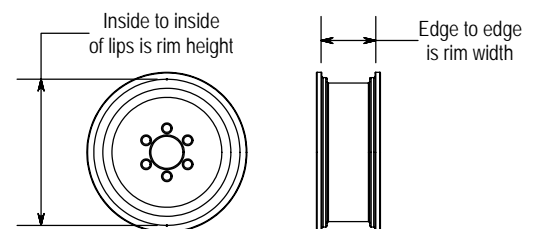
BOS-24	BOLSTER ACCESSORY SET
BOS-26	DROP DOWN BOLSTER ACCESSORY SET

## RIMS SIZE

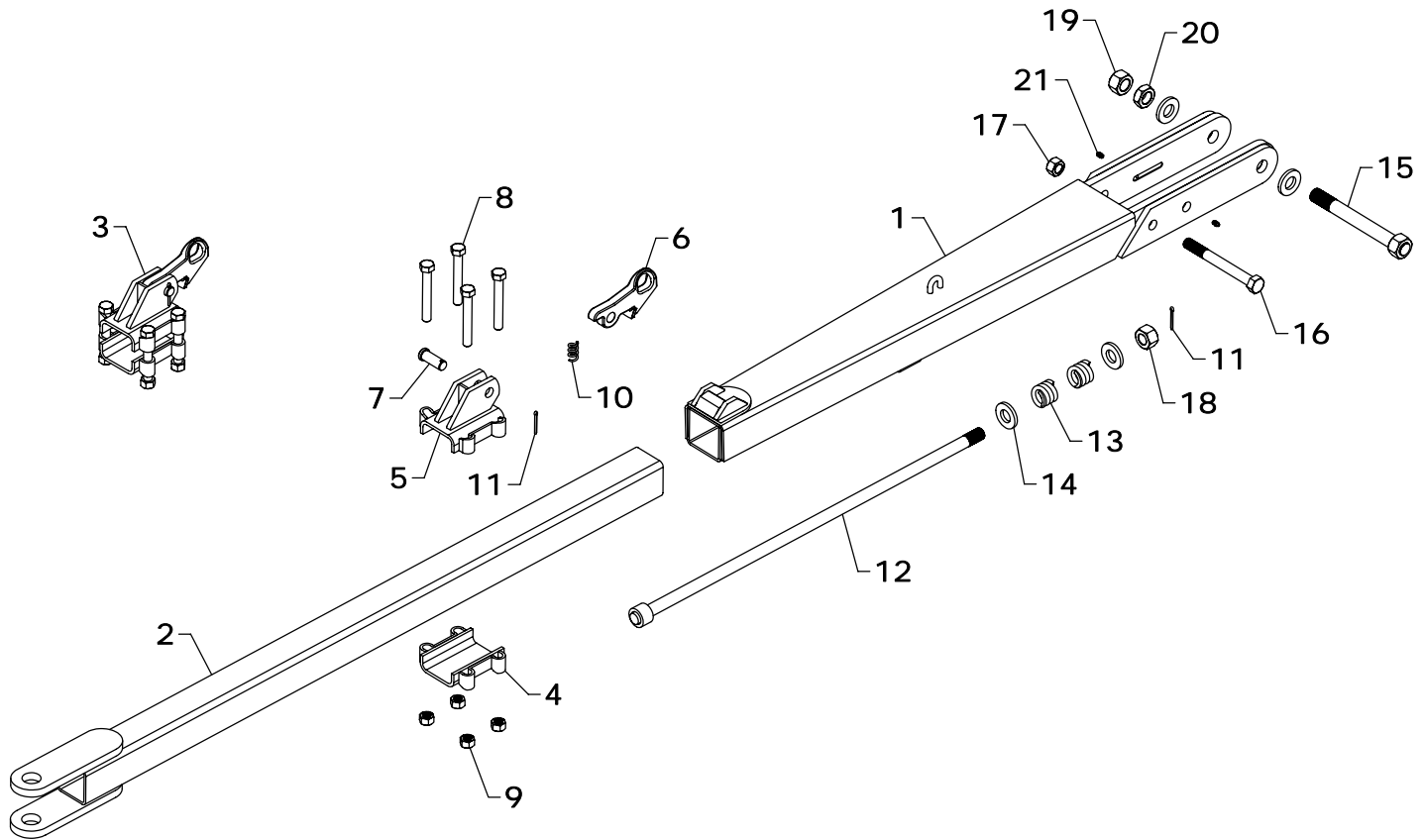
16.0 X 10
16.1 X 11
20.0 X 8
16.1 X 14
22.5 X 8.5
22.5 X 8.5*
22.5 X 13.5*

\*Extra heavy duty rims available

## HOW TO MEASURE A RIM



WESTENDORFMFG PWB310350



## WW2416 TONGUE REPLACEMENT PARTS

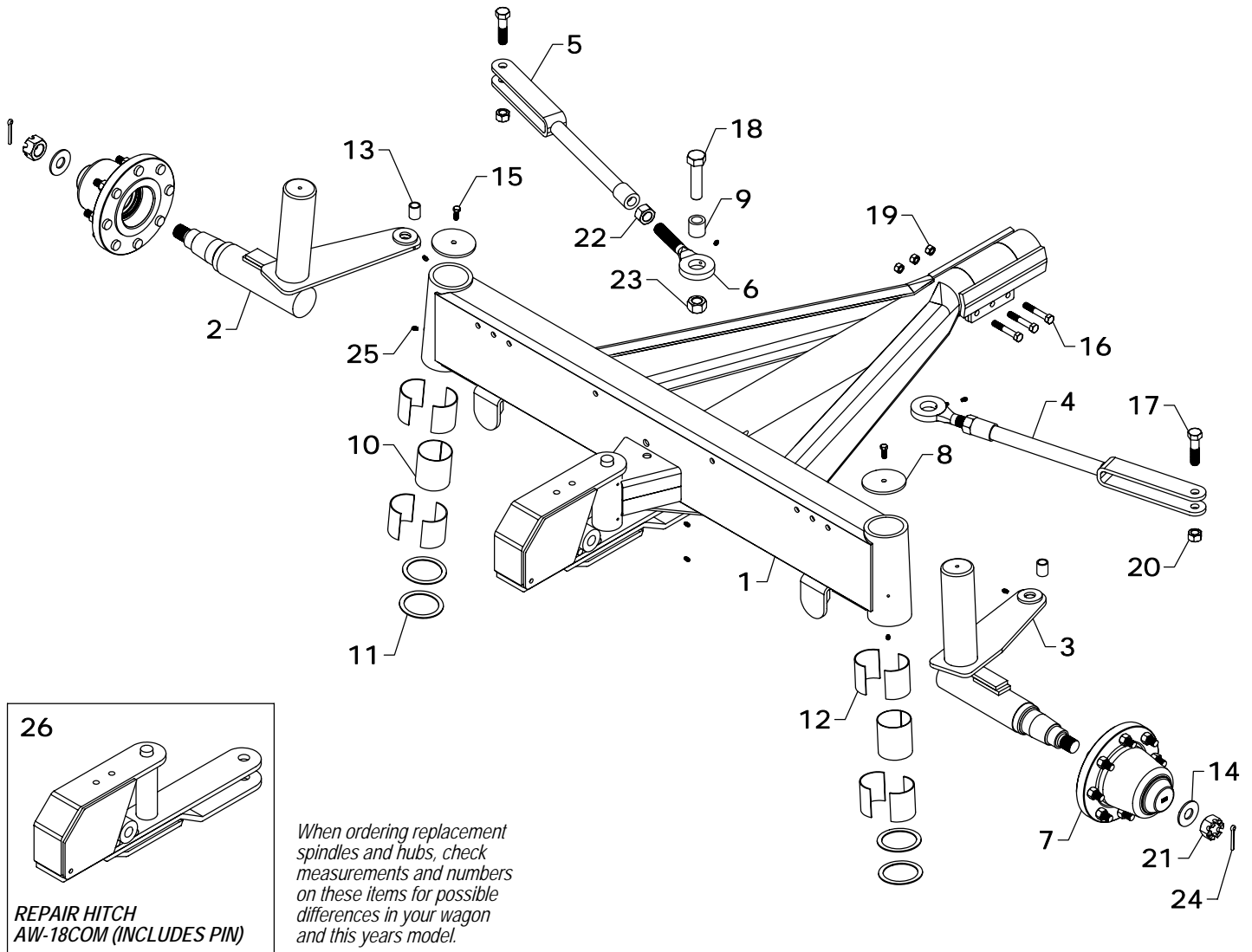
REF #	PART #	DESCRIPTION	QTY
1	ET-217AS	REAR TONGUE	1
2	ET-105AS	FRONT TONGUE	1
3	ET-170COM	TONGUE HOOK COMPLETE	1
4	ET-170SUB	TONGUE CLAMP (BOTTOM)	1
5	ET-170AS	TONGUE CLAMP (TOP)	1
6	ET-66	STEEL "HOOK"	1
7	CLP1200040	3/4 X 2 1/2 CLEVIS PIN	1
8	HHS1011072	5/8" X 4 1/2" BOLT	4
9	HTN1011	5/8" LOCK NUT	4
10	S3	SPRING	1
11	CTK0250024	5/32" X 1 1/2" COTTER PIN	2

REF #	PART #	DESCRIPTION	QTY
12	ET-31AS	SAFETY ROD	1
13	S1	SPRING	2
14	ET-209	SPACER	4
15	ET-208AS	TONGUE BOLT	1
16	HHS1210112	3/4" X 7" BOLT	1
17	HTN1210	3/4" LOCK NUT	1
18	HFN1414	7/8" NUT	1
19	HFN1614	1" NUT	1
20	HJN1614	1" JAM NUT	1
21	ZER1805	GREASE FITTING	2

*NOTE: ET-170COM includes 4(1), 5(1), 6(1), 7(1), 8(4), 9(4), 10(1), 11(1).*

WESTENDORFMFG PWB310350

WESTENDORF MFG. CO., INC. • PH:(712) 423-2762 • FAX: (712) 423-1460 • sales@westendormfg.com • www.loaders.com

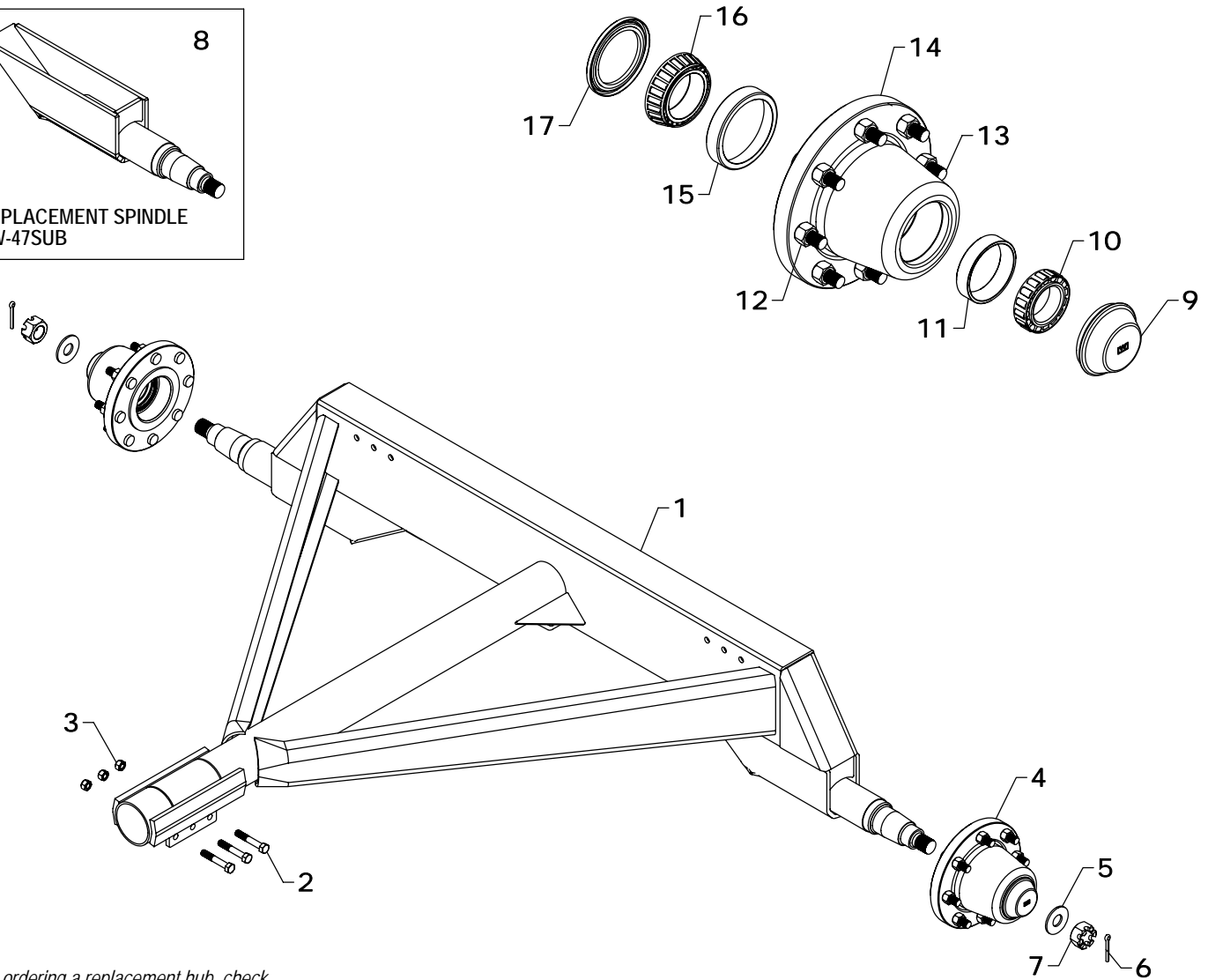
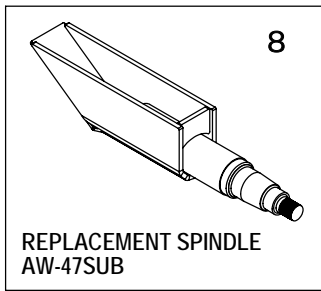


## WW2416 FRONT AXLE REPLACEMENT PARTS

REF #	PART #	DESCRIPTION	QTY
1	AW-1AS	FRONT AXLE	1
2	AW-328COM - R	SPINDLE COMPLETE (RIGHT)	1
3	AW-328COM - L	SPINDLE COMPLETE (LEFT)	1
4	AW-42COM	TIE ROD COMPLETE	1
5	AW-42AS	TIE ROD	1
6	AW-38	TIE ROD END	1
7	WW-251COM	HUB COMPLETE	2
8	AW-34	FRONT SPINDLE CAP	2
9	AW-41	TIE ROD BUSHING	1
10	AW-90	SPINDLE SLEEVE	2
11	AW-92	THRUST WASHER	4
12	AW-93	SPINDLE BUSHING	8
13	BUS-90	STEERING ARM BUSHING	2

REF #	PART #	DESCRIPTION	QTY
14	FWS20	HUB WASHER	2
15	HHS0616016	3/8" X 1" BOLT	2
16	HHS0813048	1/2" X 3" BOLT	3
17	HHS1210048	3/4" X 3" BOLT	2
18	HHS1608064	1" X 4" BOLT	1
19	HTN0813	1/2" LOCK NUT	3
20	HTN1210	3/4" LOCK NUT	2
21	HSN2012	1 1/4" SLOTTED NUT	2
22	HFN1614	1" NUT	1
23	HTN1608	1" LOCK NUT	1
24	CTK0400032	1/4" X 2" COTTER KEY	2
25	ZER1805	GREASE FITTING	8
26	AW-18COM	REPAIR HITCH	1

**NOTE:** Qty. shows number of parts received if ordered using listed part numbers. Replacement spindle contains spindle, slotted nut, and grease fitting. Replacement tie rod contains tie rod, tie rod end, nut, and grease fitting.



When ordering a replacement hub, check measurements and numbers for possible differences in your wagon and this years model.

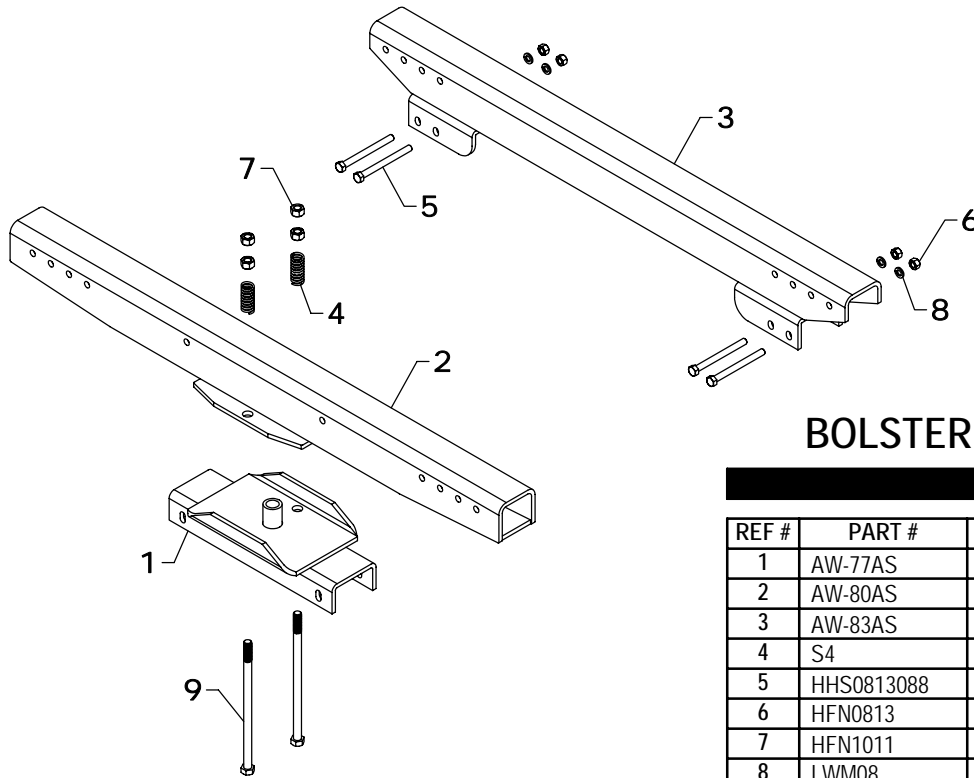
## WW2416 REAR AXLE REPLACEMENT PARTS

REF #	PART #	DESCRIPTION	QTY
1	AW-45AS	REAR AXLE	1
2	HHS0813048	1/2" X 3" BOLT	3
3	HTN0813	1/2" LOCK NUT	3
4	WW-251COM	HUB COMPLETE	2
5	FWS20	HUB WASHER	2
6	CTK0400032	1/4" X 2" COTTER KEY	2
7	HSN2012	1 1/4" SLOTTED NUT	2
8	AW-47SUB	REPLACEMENT SPINDLE	1

**NOTE:** Replacement spindle contains spindle and slotted nut.

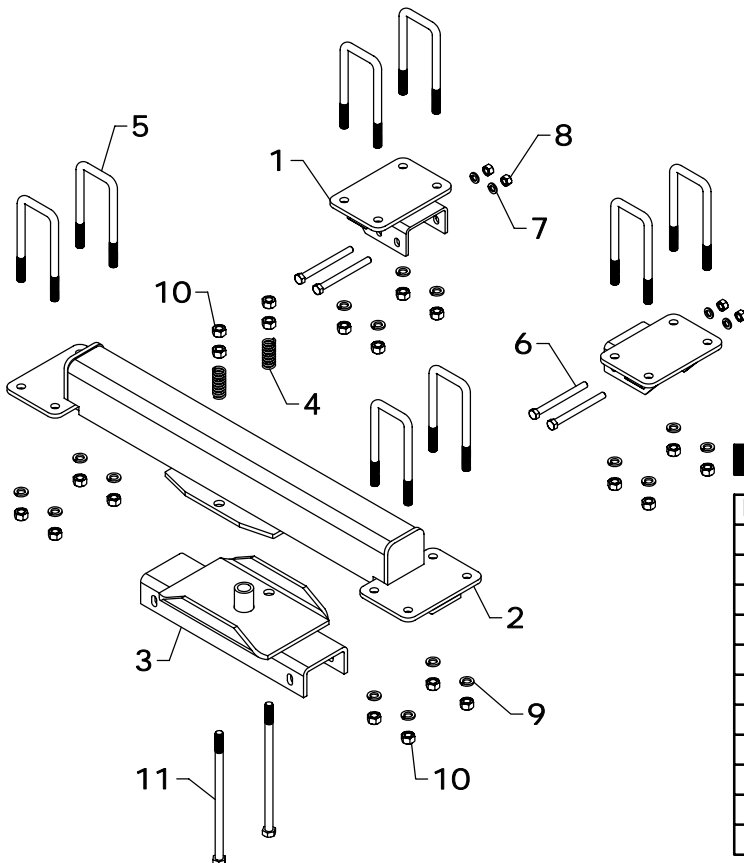
WW-251COM HUB REPLACEMENT PARTS			
REF #	PART #	DESCRIPTION	QTY
9	605524	HUB CAP	1
10	AW-590	OUTSIDE BEARING	1
11	AW-520	OUTSIDE BEARING CUP	1
12	58WN	WAGON NUT	8
13	58WB	WAGON BOLT	8
14	WW-251	HUB	1
	WW-251RB	HUB	1
15	AW-920	INSIDE BEARING CUP	1
16	AW-985	INSIDE BEARING	1
17	AW-799	GREASE SEAL	1

**NOTE:** WW-251RB contains hub, inside/outside bearing cups, nuts and bolts.



## BOS-24 BOLSTER ACCESSORY SET

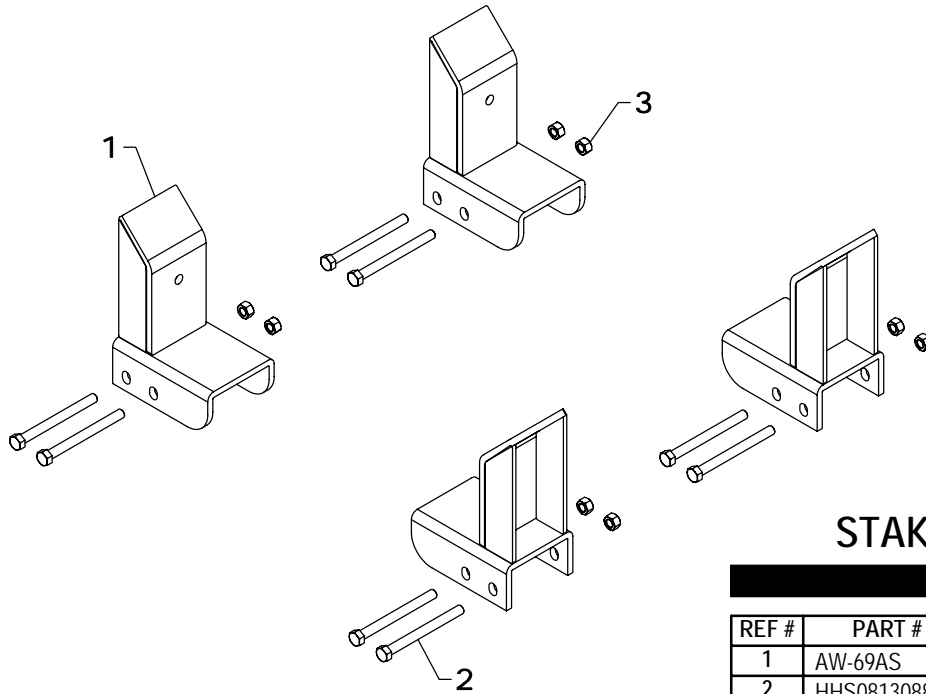
REF #	PART #	DESCRIPTION	QTY.
1	AW-77AS	SADDLE	1
2	AW-80AS	FRONT BOLSTER	1
3	AW-83AS	REAR BOLSTER	1
4	S4	SPRING	2
5	HHS0813088	1/2" X 5 1/2" BOLT	4
6	HFN0813	1/2" NUT	4
7	HFN1011	5/8" NUT	4
8	LWM08	1/2" LOCKWASHER	4
9	HHS1011192	5/8" X 12" BOLT	2



## BOS-26 DROP DOWN BOLSTER ACCESSORY SET

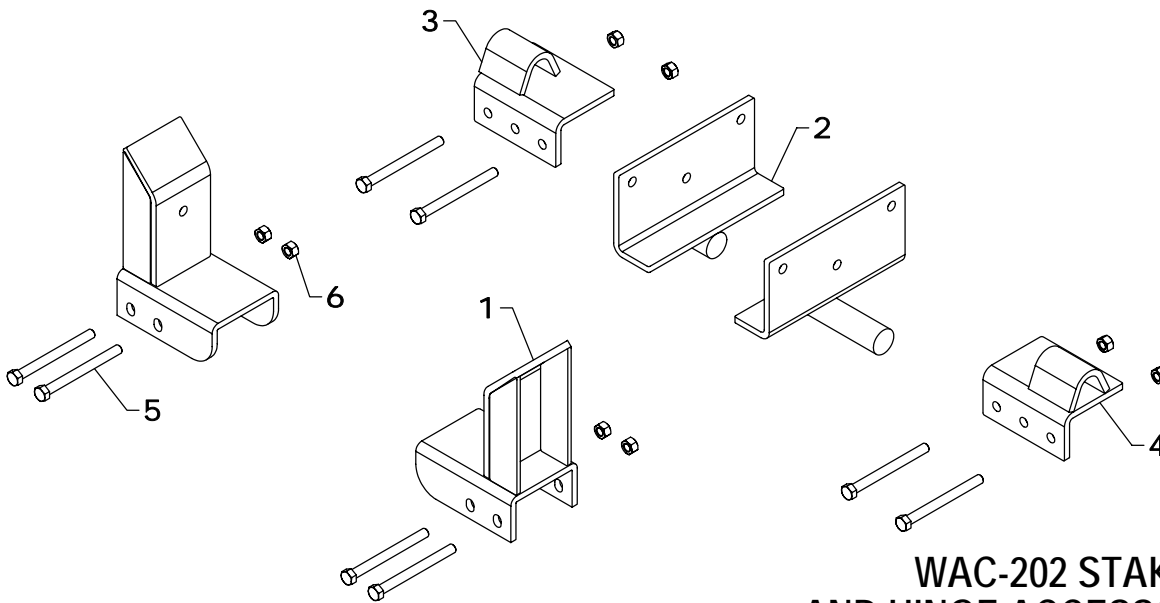
REF #	PART #	DESCRIPTION	QTY.
1	BB-1AS	REAR BOLSTER PLATE	2
2	BB-4AS	FRONT BOLSTER	1
3	AW-77AS	SADDLE	1
4	S4	SPRING	2
5	U-8	U-BOLT (7 5/8" INSIDE LEG)	8
6	HHS0813088	1/2" X 5 1/2" BOLT	4
7	LWM08	1/2" LOCKWASHER	4
8	HFN0813	1/2" NUT	4
9	LWM10	5/8" LOCK WASHER	16
10	HFN1011	5/8" NUT	20
11	HHS1011192	5/8" X 12" BOLT	2

WESTENDORFMFG PWB310350



## WAC-201 STAKE ACCESSORY SET

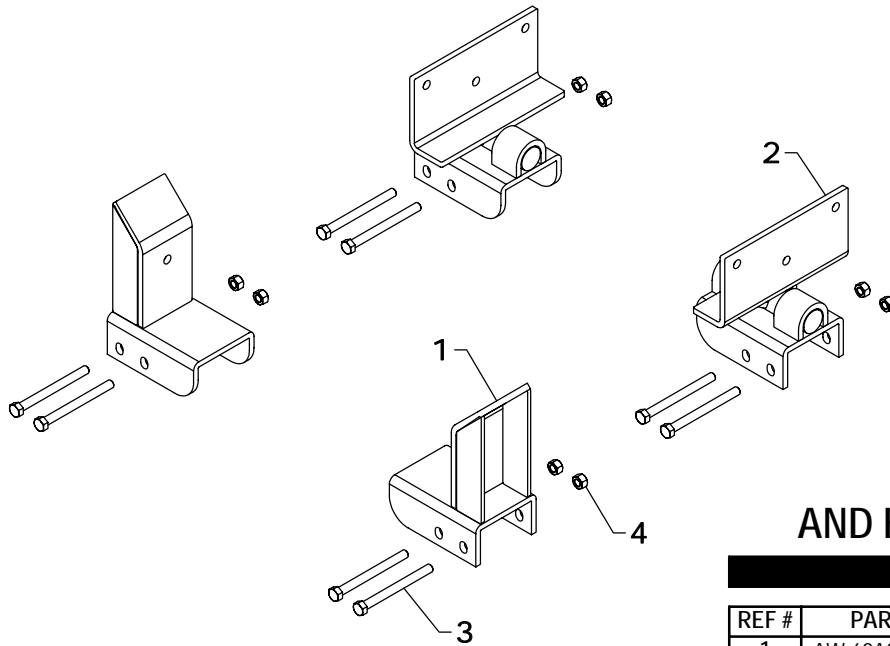
REF #	PART #	DESCRIPTION	QTY.
1	AW-69AS	STAKE	4
2	HHS0813088	1/2" X 5 1/2" BOLT	8
3	HTN0813	1/2" LOCK NUT	8



## WAC-202 STAKE AND HINGE ACCESSORY SET

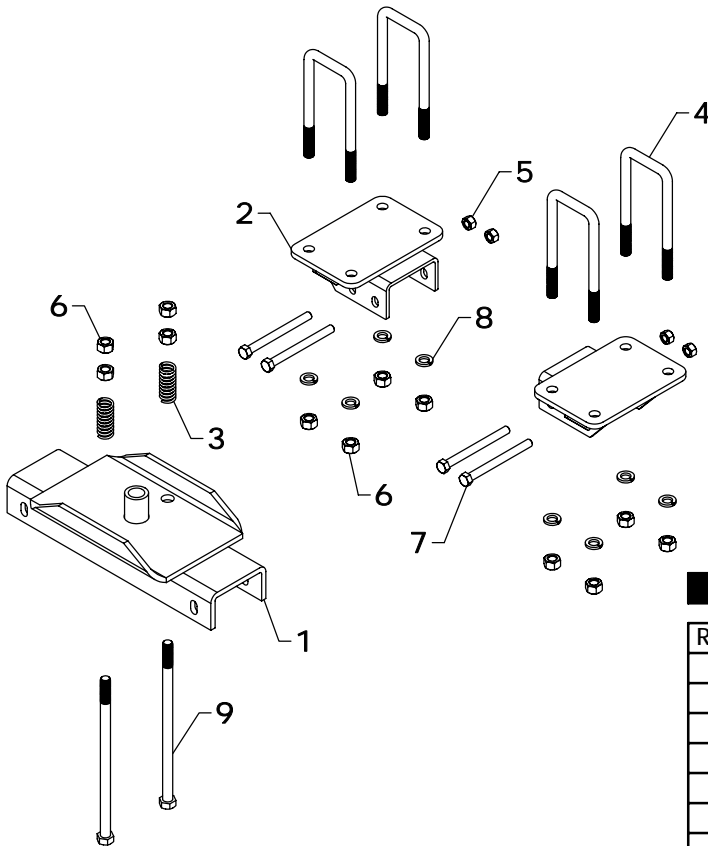
REF #	PART #	DESCRIPTION	QTY.
1	AW-69AS	STAKE	2
2	AW-71AS	HINGE PLATE	2
3	AW-73AS - R	AXLE CLAMP (RIGHT)	1
4	AW-73AS - L	AXLE CLAMP (LEFT)	1
5	HHS0813088	1/2" X 5 1/2" BOLT	8
6	HTN0813	1/2" LOCK NUT	8

WESTENDORFMFG PWB310350



## WAC-243 STAKE AND HINGE ACCESSORY SET

REF #	PART #	DESCRIPTION	QTY.
1	AW-69AS	STAKE	2
2	AWD-71AS	HINGE	2
3	HHS0813088	1/2" X 5 1/2" BOLT	8
4	HTN0813	1/2" LOCK NUT	8



## WAC-244 WAGON BOX MOUNTING SET

REF #	PART #	DESCRIPTION	QTY.
1	AW-77AS	SADDLE	1
2	BB-1AS	REAR BOLSTER PLATE	2
3	S4	SPRING	2
4	U-8	U-BOLT (7 5/8" INSIDE LEG)	4
5	HTN0813	1/2" LOCK NUT	4
6	HFN1011	5/8" NUT	12
7	HHS0813088	1/2" X 5 1/2" BOLT	4
8	LWM10	5/8" LOCK WASHER	8
9	HHS1011192	5/8" X 12" BOLT	2

WESTENDORFMFG PWB310350