

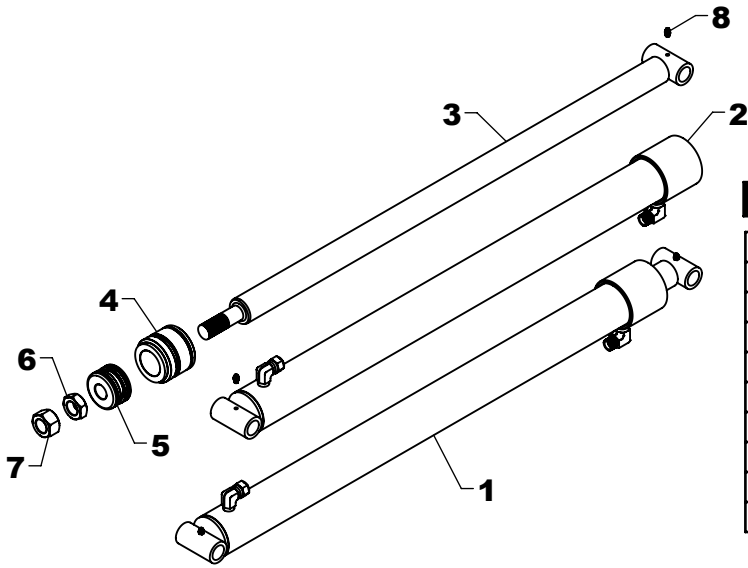
WL-27 LOADER FRAME AND TOWER REPLACEMENT PARTS

REF #	PART #	DESCRIPTION	QTY.
1	JAT-12AS	TOWER	1
2	BT-18AS - R	FLIP LOCK (RIGHT)	1
3	BT-18AS - L	FLIP LOCK (LEFT)	1
4	JAF-4AS	FRAME	1
5	JF-56AS	OUTER GAUGE ROD	1
6	JF-57AS	GAUGE ROD	1

REF #	PART #	DESCRIPTION	QTY.
7	JT-20	PIN	7
8	JF-65	PIN	1
9	HHS1011028	5/8" X 1 3/4" BOLT	2
10	DRP0600028	DOUBLE ROLL PIN	8
11	ZER1805	GREASE FITTING	4
12	CTK0400032	1/4" X 2" COTTER KEY	1

WESTENDORFMFG PWB216170

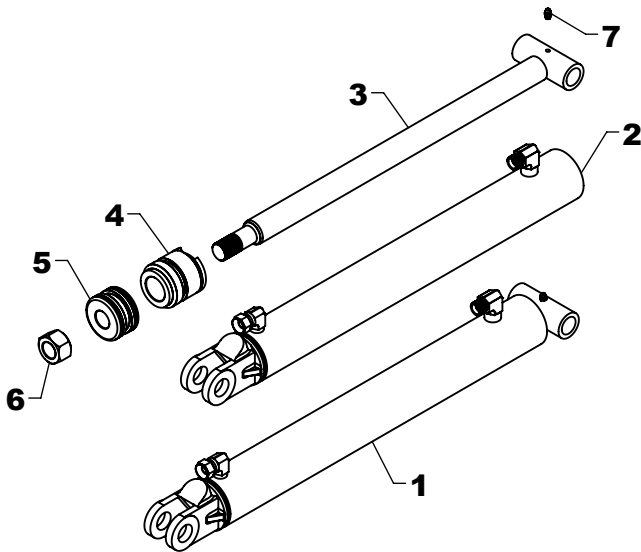
WESTENDORF MFG CO., INC. • PH: (712) 423-2762 • FAX: (712) 423-1460 • sales@westendorfmfg.com • www.loaders.com



WL-27 LIFT CYLINDER REPLACEMENT PARTS

REF #	PART #	DESCRIPTION	QTY.
1	L-35	LIFT CYLINDER	1
2	L-3501	BARREL	1
3	L-3510	RAM	1
4	G-B	GLAND	1
5	P-A	PISTON	1
6	HJN1614	1" JAM NUT	1
7	HFN1614	1" NUT	1
8	ZER1805	GREASE FITTING	2
9	#5CK	REPAIR KIT *	*

NOTE: * Repair kit contains parts to repair one cylinder



WL-21 / WL-27 / WL-42 BUCKET CYLINDER REPLACEMENT PARTS

REF #	PART #	DESCRIPTION	QTY.
1	B-1	BUCKET CYLINDER	1
2	B-101	BARREL	1
3	B-110	RAM	1
4	G-A	GLAND	1
5	P-A	PISTON	1
6	HFN1614	1" NUT	1
7	ZER1805	GREASE FITTING	1
8	#1CK	REPAIR KIT	*

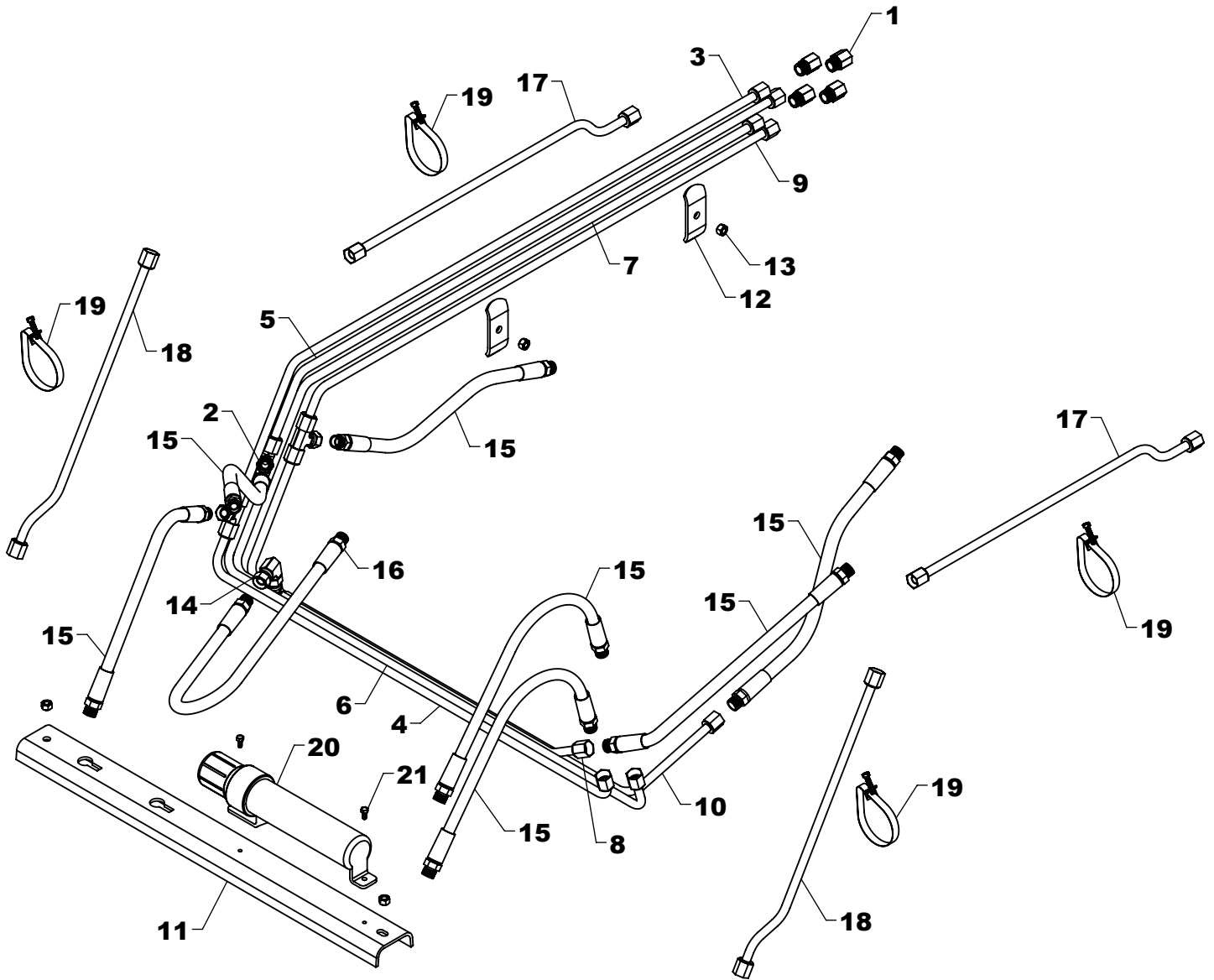
NOTE: * Repair kit contains parts to repair one cylinder

STEPS TO REPAIR CYLINDER

- 1) Extend the ram out as far as possible.
- 2) At the ram end of the cylinder barrel you will find a snap ring located either on the face or inside the notch of the gland.
- 3) Locate the snap ring eyes (you may need to turn the gland inside the barrel to find the snap ring eyes). Compress the snap ring with snap ring pliers.
- 4) Remove the ram assembly (ram, gland, & piston) from barrel.
- 5) Notice the direction they're pointing so they can be properly re-assembled.
- 6) Remove the jam nut and/or hex nut from the end of the ram.
- 7) Remove the old seals and rings and replace them with the new seals and rings. (Seal kits are packaged for several different cylinders. You may have extra parts)
- 8) Clean cylinder with cleaner and a clean lint free cloth.
- 9) Lubricate the seals and rings to aid assembly.
- 10) Assemble the cylinder by reversing the order.

CYLINDER REPAIR TIPS

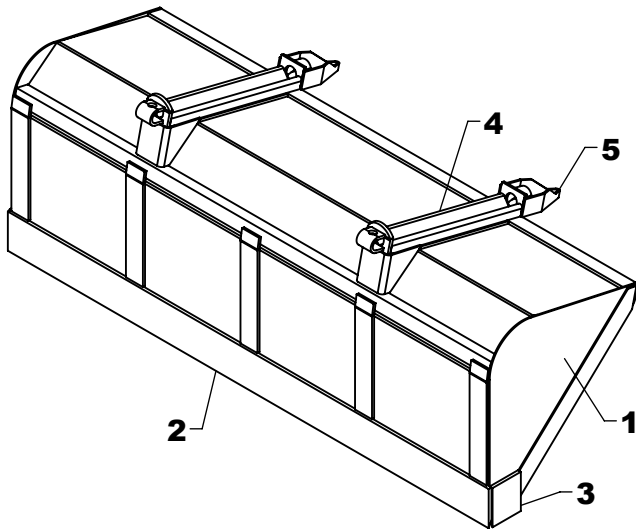
- When disassembling cylinders, keep the parts in correct orientation. Remove parts in sequence.
- Note the direction of the piston and gland. Lay out old seals and parts as they are removed.
- Assemble cylinder in proper order; lubricate to aid assembly.



WL-27 HYDRAULICS

REF #	PART #	DESCRIPTION	QTY.
1	PF-FFC8	FEMALE CONNECTOR	4
2	PF-FSBT8	SWIVEL NUT TEE	4
3	OLT-460	OIL LINE	1
4	OLT-461	OIL LINE	1
5	OLT-462	OIL LINE	1
6	OLT-463	OIL LINE	1
7	OLT-464	OIL LINE	1
8	OLT-465	OIL LINE	1
9	OLT-466	OIL LINE	1
10	OLT-467	OIL LINE	1
11	OH-2	OIL LINE PROTECTOR	1

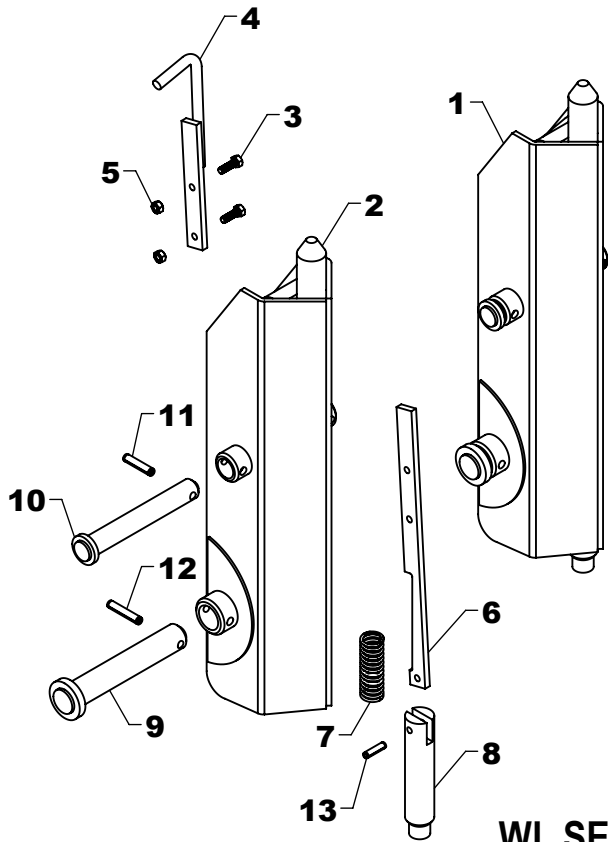
REF #	PART #	DESCRIPTION	QTY.
12	OH-3	OIL LINE HOLDER	2
13	HFN0616	3/8" NUT	4
14	PF-FSE8	90° SWIVEL NUT ELBOW	1
15	H06020-FF	3/8" X 20" HOSE	7
16	H06030-FF	3/8" X 30" HOSE	1
17	OLT-1	OIL LINE	2
18	OLT-143	OIL LINE	2
19	BAND-12	METAL BAND	4
20	GP-2	MANUAL CANISTER	1
21	EC-M03	SELF TAPPING SCREW	2



WL-27 BUCKET

REF #	PART #	DESCRIPTION	QTY.
1	72Q214	72" BUCKET	1
	84Q216	84" BUCKET	1
2	JB-14	72" BLADE	1
	SB-14	84" BLADE	1
3	SB-15	BLADE	2
4	QC-13AS	WELD ON ADAPTER	2
5	JB-22	GUIDE (OPTIONAL)	2

NOTE: *Check width of the bucket and use the part number that matches. If your size is not shown, contact Westendorf Mfg. Co.



WL-27 / WL-42 SNAP-ATTACH™ COUPLER (C-5)

REF #	PART #	DESCRIPTION	QTY.
1	QC-501COM	MALE COUPLER COMPLETE	1
2	QC-501AS	MALE COUPLER	1
3	HHS0518016	5/16" X 1" BOLT	2
4	QC-6AS	LATCH HANDLE	1
5	HTN0518	5/16" LOCK NUT	2
6	QC-8	LATCH	1
7	QC-12	SPRING	1
8	QC-3	BOTTOM LATCH PIN	1
9	QC-206AS	LINKAGE PIN	1
10	LMF-18AS	CYLINDER PIN ASSEMBLY	1
11	DRP0600028	DOUBLE ROLL PIN	1
12	DRP0600032	DOUBLE ROLL PIN	1
13	RLP0500020	5/16" X 1 1/4" ROLL PIN	1

NOTE: Qty. shows number of parts received if ordered using listed part numbers.
C-5 is two (QC-501COM) couplers.

WL SERIES COSMETICS

REF #	PART #	DESCRIPTION	QTY.
1	DEC-21	DECAL KIT (WL-21)	1
	DEC-27	DECAL KIT (WL-27)	1
	DEC-42	DECAL KIT (WL-42)	1
2	V-5403-A	RED SPRAY PAINT	1
	V-9524-A	BLACK SPRAY PAINT	1

REF #	PART #	DESCRIPTION	QTY.
3	V-5403-P	PINT RED PAINT	1
	V-9524-P	PINT BLACK PAINT	1
4	V-5403-Q	QUART RED PAINT	1
	V-9524-Q	QUART BLACK PAINT	1
5	V-5403-G	GALLON RED PAINT	1
	V-9524-G	GALLON BLACK PAINT	1

NOTE: Warning decals are available at no charge. If they become damaged or missing, order part numbers DE-DWWS, DE-WWWS, DE-PP, DE-27, & DE-TX.

WESTENDORFMFG PWB216170