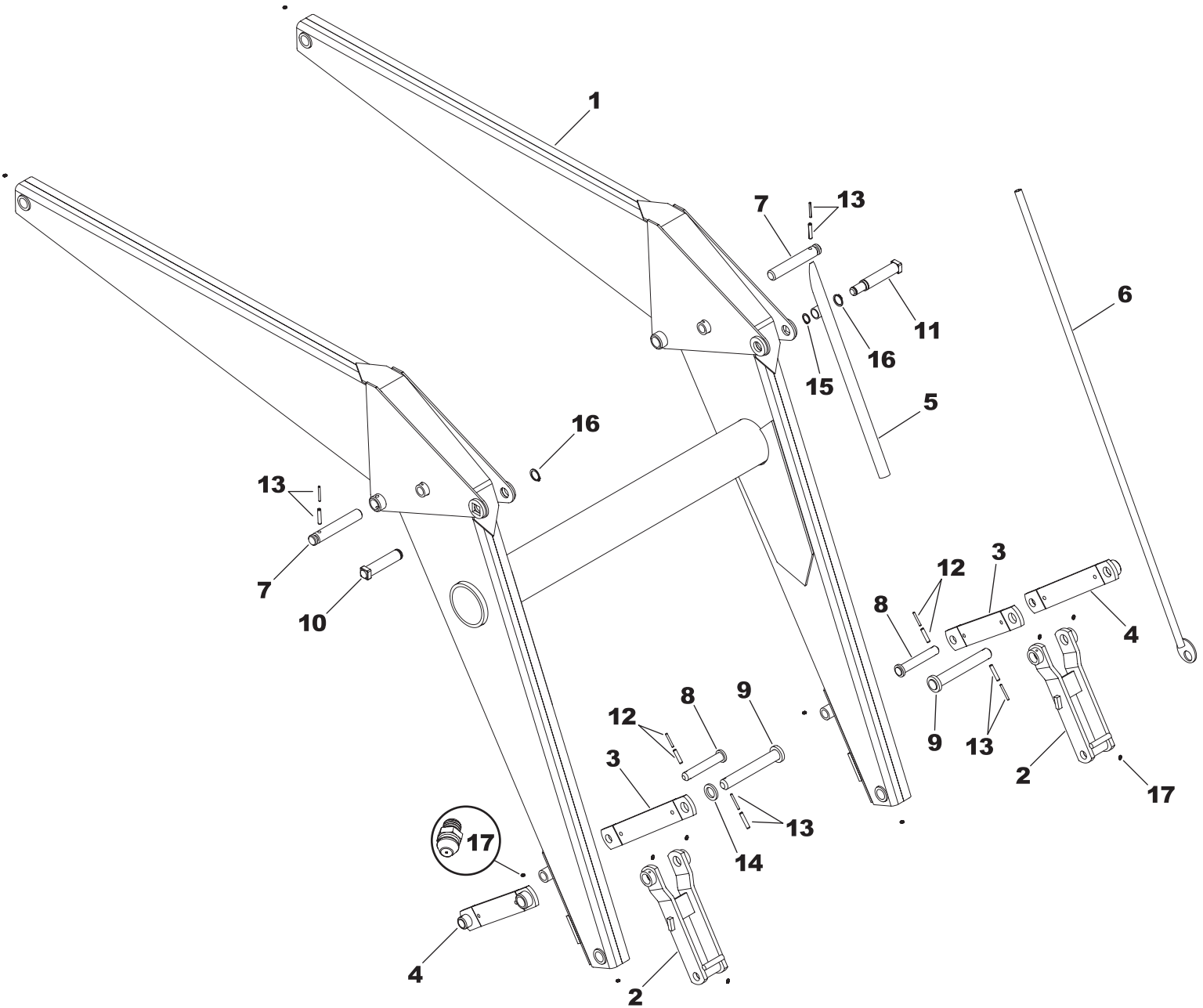


## BASIC LOADER TOWER REPLACEMENT PARTS

Ref.	Part No.	Description	Qty.	Ref.	Part No.	Description	Qty.
1	NAT-12BAS-R	TOWER (RIGHT)	1	9	NAT-106A-L	LATCH (LEFT)	1
2	NAT-12BAS-L	TOWER (LEFT)	1	10	NAT-126	RIVET	2
-	NAT-120COM-R	SLIDE LOCK COMPLETE*	1	11	NAT-140	EYE BOLT	4
-	NAT-120COM-L	SLIDE LOCK COMPLETE**	1	12	RLG-51	SPRING	2
3	NAT-120BAS-R	SLIDE LOCK - RIGHT	1	13	HHS1011028	5/8" X 1-3/4" BOLT	4
4	NAT-120BAS-L	SLIDE LOCK - LEFT	1	14	HHS1011072	5/8" X 4-1/2" BOLT	4
5	RT-15FAS	LOADER SHOE	2	15	CBF1011056	5/8" X 3-1/2" CARRIAGE BOLTS	4
6	0H005A	FRONT WRAP (STANDARD)***	1	16	LWM10	5/8" LOCK WASHER	4
7	NAF-51	PIN	4	17	HTN1011	5/8" LOCK NUT	12
8	NAT-106A-R	LATCH (RIGHT)	1	18	DRP0600032	DOUBLE ROLL PIN	4

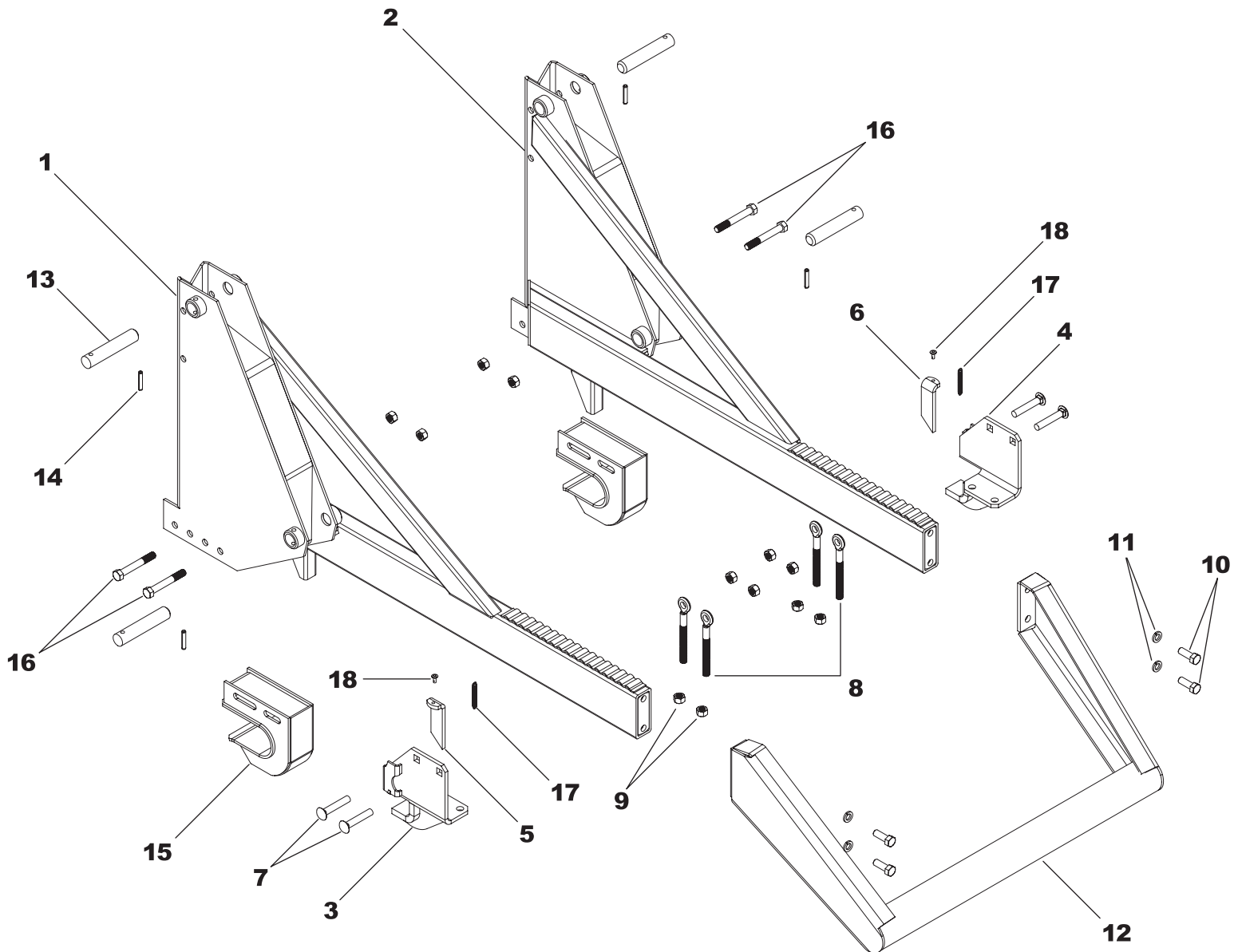
**NOTE:** \*NAT-120COM-R includes 3,8,10,11(2),12,15(2),17(4). \*\*NAT-120COM-L includes 4,9,10,11(2),12,15(2),17(4).

\*\*\*Varies by Tractor (Standard Wrap is 0H005A)



## BASIC LOADER FRAME REPLACEMENT PARTS

Ref.	Part No.	Description	Qty.	Ref.	Part No.	Description	Qty.
1	NAF-4CAS	FRAME ONLY	1	10	NAF-52AS	PIN	1
2	NAF-15BAS	BUCKET PIVOT	2	11	NAF-53BAS	GAUGE ROD PIN	1
3	NAF-10C	INSIDE BUCKET PIVOT	2	12	DRP0600028	DOUBLE ROLL PIN	2
4	NAF-10CAS	OUTSIDE BUCKET PIVOT	2	13	DRP0600032	DOUBLE ROLL PIN	4
5	LMF-31AS	GAUGE ROD HOLDER	1	14	RAT-32	SPACER WASHER	1
6	LMF-47AS	GAUGE ROD	1	15	SR-C08	SNAP RING	1
7	LF-83B	LIFT PIN	2	16	SR-C10	SNAP RING	2
8	LMF-28AS	PIN	2	17	ZER1805	GREASE FITTINGS	14
9	LMF-125AS	PIN	2				

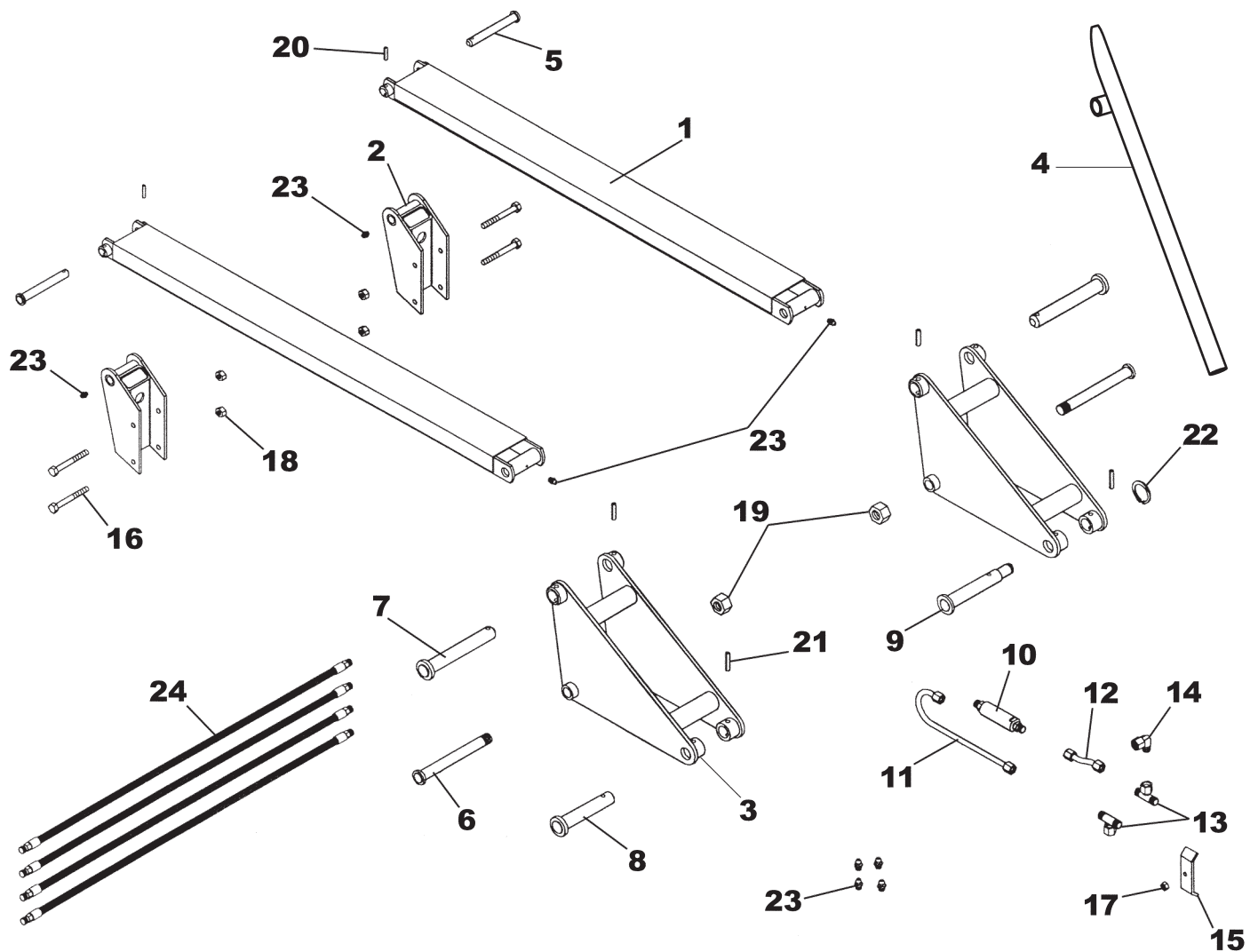


## TA-46A TOWER REPLACEMENT PARTS

Ref.	Part No.	Description	Qty.	Ref.	Part No.	Description	Qty.
1	NAT-112CAS-R	TOWER (RIGHT)	1	9	HTN1011	5/8" LOCK NUT	12
2	NAT-112CAS-L	TOWER (LEFT)	1	10	HHS1011028	5/8" X 1-3/4" BOLT	4
-	NAT-120COM-R	SLIDE LOCK COMPLETE*	1	11	LWM10	5/8" LOCK WASHER	4
-	NAT-120COM-L	SLIDE LOCK COMPLETE**	1	12	0H010D	STANDARD FRONT WRAP***	1
3	NAT-120BAS-R	SLIDE LOCK (RIGHT)	1	13	NAF-51	PIN	4
4	NAT-120BAS-L	SLIDE LOCK (LEFT)	1	14	DRP0600032	DOUBLE ROLL PIN	4
5	NAT-106A-R	LATCH (RIGHT)	1	15	RT-15FAS	LOADER SHOE	2
6	NAT-106A-L	LATCH (LEFT)	1	16	HHS1011072	5/8" X 4-1/2" BOLT	4
7	CBF1011056	5/8" X 3-1/2" CARRIAGE BOLT	4	17	RLG-51	SPRING	2
8	NAT-140	EYE BOLT	4	18	NAT-126	RIVET	2

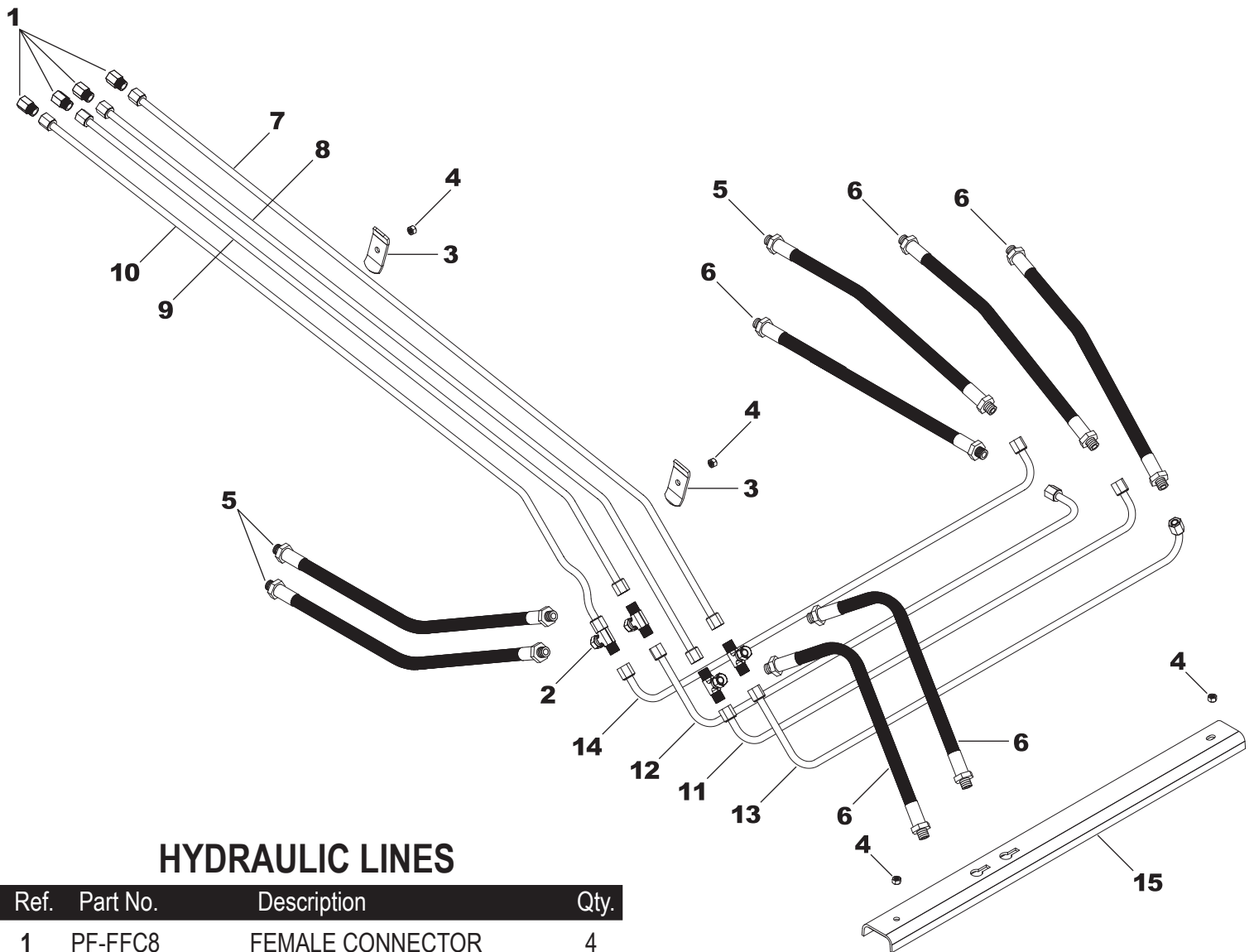
**NOTE:** \*NAT-120COM-R includes 3,5,7(2),8(2),9(4),17,18. \*\*NAT-120COM-L includes 4,6,7(2),8(2),9(4),17,18.

\*\*\*Varies by tractor (Standard Wrap is 0H010D)



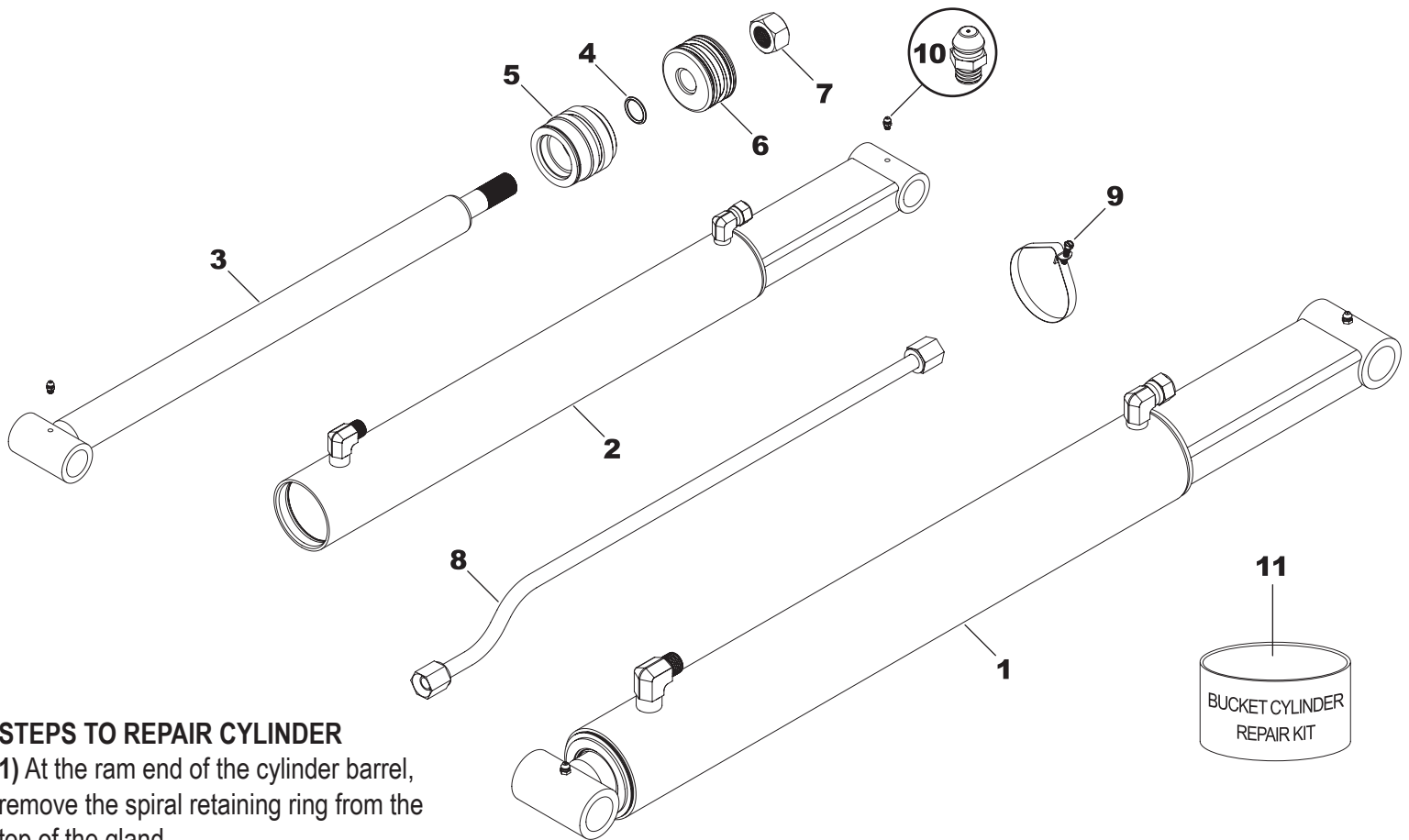
## OPTIONAL SELF LEVELING KIT: KSL-2 FOR TA-46B & TA-46AB

Ref.	Part No.	Description	Qty.	Ref.	Part No.	Description	Qty.
1	NAF-23BAS	S.L. LINKAGE BAR	2	13	PF-FSBT8	SWIVEL TEE	2
2	NAT-36DAS	S.L. BRACKET	2	14	PF-FSE8	90° SWIVEL NUT ELBOW	1
3	NAF-29BAS	HINGE PLATE	2	15	OH-5A	OIL LINE HOLDER	1
4	LMF-131AS	GUAGE ROD HOLDER	1	16	HFN1011088	5/8" x 5-1/2" BOLT	4
5	NAF-80AAS	PIN	2	17	HTN0616	3/8" LOCK NUT	1
6	LMF-24AAS	RD. HEAD BOLT	2	18	HTN1011	5/8" LOCK NUT	4
7	LMF-125AS	RD. HEAD PIN	2	19	HFN1614	1" NUT	2
8	NAF-56AAS	RD. HEAD PIN	1	20	DRP060028	DOUBLE ROLL PIN	4
9	NAF-57BAS	RD. HD. GA. ROD PIN	1	21	DRP060032	DOUBLE ROLL PIN	2
10	SLV-1A	S.L. VALVE	1	22	SR-C08	SNAP RING	1
11	OLT-22	HOOK OIL LINE	1	23	ZER1805	GREASE FITTING	8
12	OLT-159	OFFSET OIL LINE	1	24	H06030-FF	3/8" x 30" HOSE	4



## HYDRAULIC LINES

Ref.	Part No.	Description	Qty.
1	PF-FFC8	FEMALE CONNECTOR	4
2	PF-FSBT8	SWIVEL NUT TEE	4
3	OH-3C	OIL LINE HOLDER	2
4	HTN0616	LOCK NUT - 3/8"	4
5	H06020FF	HOSE - 3/8" X 20"	3
6	H06030FF	HOSE - 3/8" X 30"	5
7	OLT-137	OIL LINE	1
8	OLT-139	OIL LINE	1
9	OLT-136	OIL LINE	1
10	OLT-138	OIL LINE	1
11	OLT-140	OIL LINE	1
12	OLT-141	OIL LINE	1
13	OLT-142	OIL LINE	1
14	OLT-144	OIL LINE	1
15	OH-1A	OIL LINE COVER	1



## STEPS TO REPAIR CYLINDER

1) At the ram end of the cylinder barrel, remove the spiral retaining ring from the top of the gland.

**NOTE:** The G-E gland does not use the spiral retaining ring.

2) Gently drive the gland into the barrel using a brass or non-marring punch until the round retaining ring is visible.

3) Remove the round retaining ring using a pair of long nose pliers.

4) Remove the ram assembly (ram, gland, and piston) from the barrel.

5) Notice the direction they are pointing so they can be properly assembled.

6) Remove the jam nut and/or hex nut from the end of the ram.

7) Remove the old seals and rings and replace them with the new seals and rings. (Seal kits are packaged for several different cylinders. You may have extra parts.)

8) Clean the cylinder with cleaner and a clean lint free cloth.

9) Lubricate the seals and rings to aid assembly.

10) Assemble the cylinder by reversing the order.

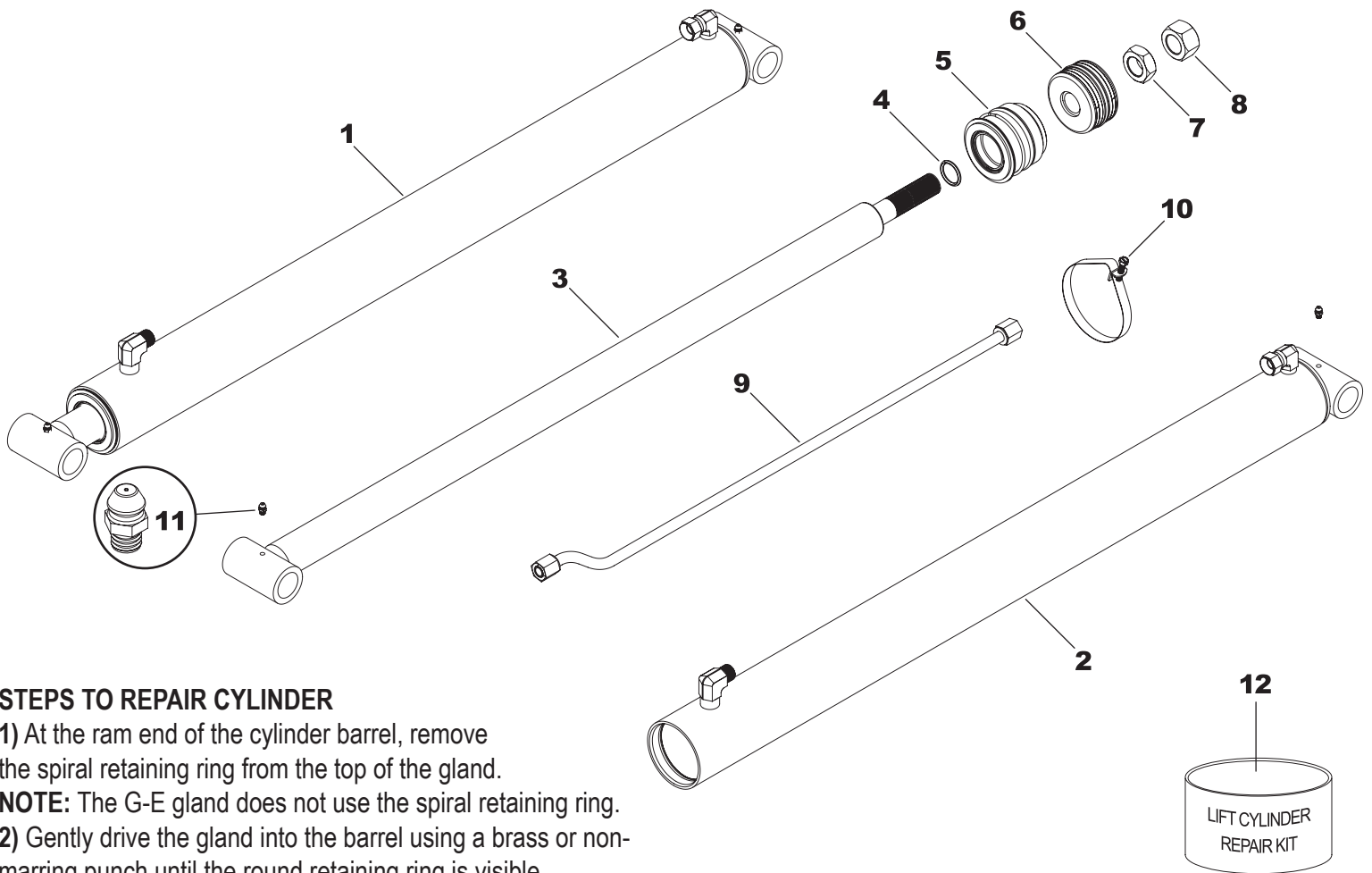
## CYLINDER REPAIR TIPS

- When disassembling cylinders, keep the parts in correct orientation. Remove parts in sequence.
- Note the direction of the piston and gland. Lay out old seals and parts as they are removed.
- Assemble cylinder in the proper order; lubricate to aid assembly.

## BUCKET CYLINDER REPLACEMENT PARTS

Ref.	Part No.	Description	Qty.
1	B-24A	CYLINDER COMPLETE	1
2	B-2401A	CYLINDER BARREL	1
3	B-2410A	CYLINDER RAM	1
4	OR-214	O-RING	1
5	G-L	GLAND	1
6	P-B	PISTON	1
7	HFN1614	1" NUT	1
8	OLT-1	OIL LINE	1
9	BAND-15	METAL BAND	1
10	ZER1805	ZERK	2
11	# 4CK	SEAL KIT*	1

**NOTE:** \*Seal kit contains parts to repair one cylinder.



## STEPS TO REPAIR CYLINDER

- 1) At the ram end of the cylinder barrel, remove the spiral retaining ring from the top of the gland.
- NOTE:** The G-E gland does not use the spiral retaining ring.
- 2) Gently drive the gland into the barrel using a brass or non-marring punch until the round retaining ring is visible.
- 3) Remove the round retaining ring using a pair of long nose pliers.
- 4) Remove the ram assembly (ram, gland, and piston) from the barrel.
- 5) Notice the direction they are pointing so they can be properly assembled.
- 6) Remove the jam nut and/or hex nut from the end of the ram.
- 7) Remove the old seals and rings and replace them with the new seals and rings. (Seal kits are packaged for several different cylinders. You may have extra parts.)
- 8) Clean the cylinder with cleaner and a clean lint free cloth.
- 9) Lubricate the seals and rings to aid assembly.
- 10) Assemble the cylinder by reversing the order.

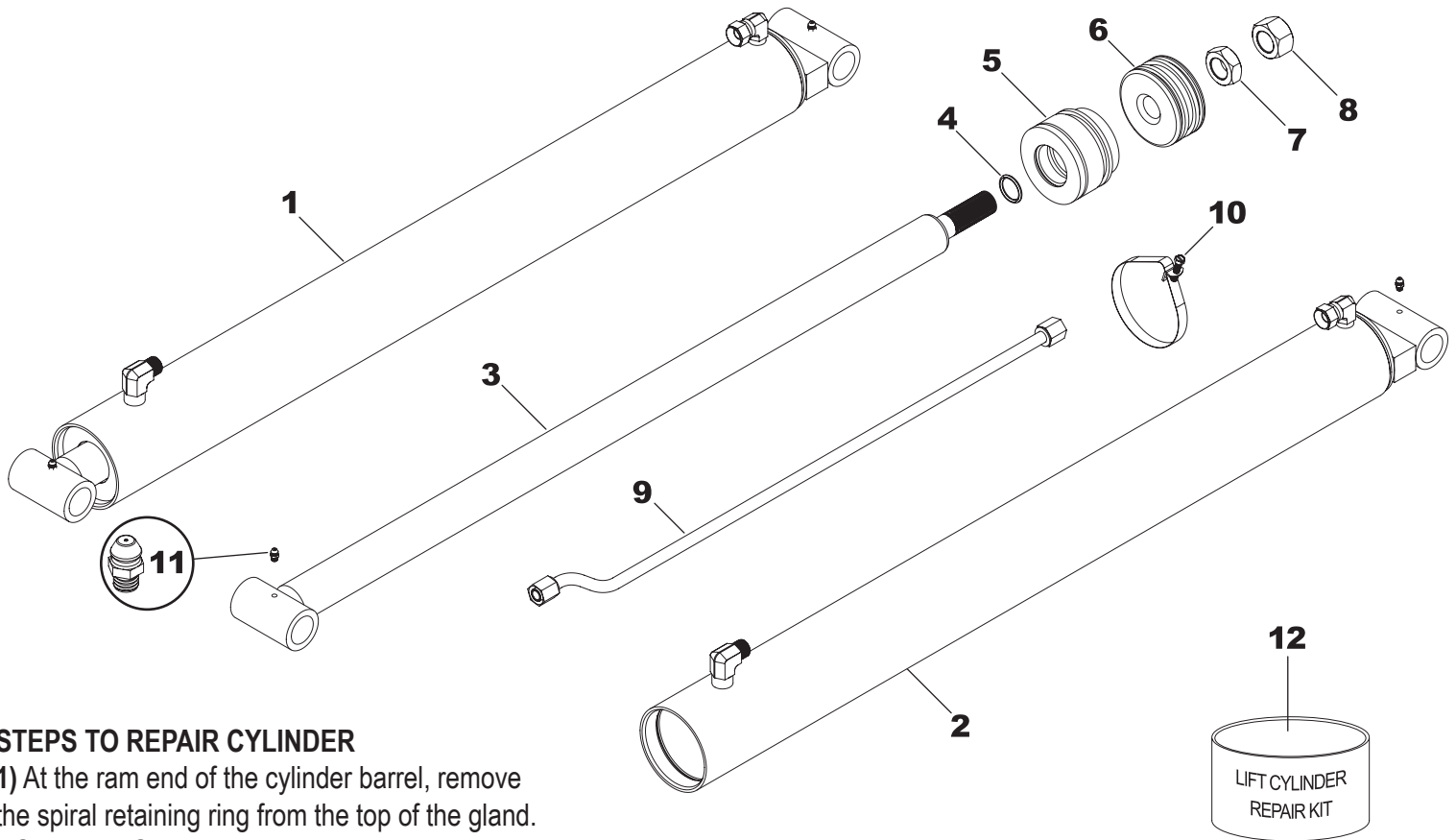
## CYLINDER REPAIR TIPS

- When disassembling cylinders, keep the parts in correct orientation. Remove parts in sequence.
- Note the direction of the piston and gland. Lay out old seals and parts as they are removed.
- Assemble cylinder in the proper order; lubricate to aid assembly.

## STANDARD 3" LIFT CYLINDER REPLACEMENT PARTS

Ref.	Part No.	Description	Qty.
1	L-24A	CYLINDER COMPLETE	1
2	L-2401A	CYLINDER BARREL	1
3	L-2410A	CYLINDER RAM	1
4	OR-214	O-RING	1
5	G-L	GLAND	1
6	P-B	PISTON	1
7	HJN1614	1" HEX JAM NUT	1
8	HFN1614	1" HEX NUT - STD	1
9	OLT-2	OIL LINE	1
10	BAND-15	METAL BAND	1
11	ZER1805	GREASE ZERK	2
12	#4CK	SEAL REPAIR KIT*	-

\*Contains: O-Rings, Back-up Washers, Piston Rings, Snap Ring, and Seal to repair one cylinder.



## STEPS TO REPAIR CYLINDER

- 1) At the ram end of the cylinder barrel, remove the spiral retaining ring from the top of the gland.
- NOTE:** The G-E gland does not use the spiral retaining ring.
- 2) Gently drive the gland into the barrel using a brass or non-marring punch until the round retaining ring is visible.
- 3) Remove the round retaining ring using a pair of long nose pliers.
- 4) Remove the ram assembly (ram, gland, and piston) from the barrel.
- 5) Notice the direction they are pointing so they can be properly assembled.
- 6) Remove the jam nut and/or hex nut from the end of the ram.
- 7) Remove the old seals and rings and replace them with the new seals and rings. (Seal kits are packaged for several different cylinders. You may have extra parts.)
- 8) Clean the cylinder with cleaner and a clean lint free cloth.
- 9) Lubricate the seals and rings to aid assembly.
- 10) Assemble the cylinder by reversing the order.

## CYLINDER REPAIR TIPS

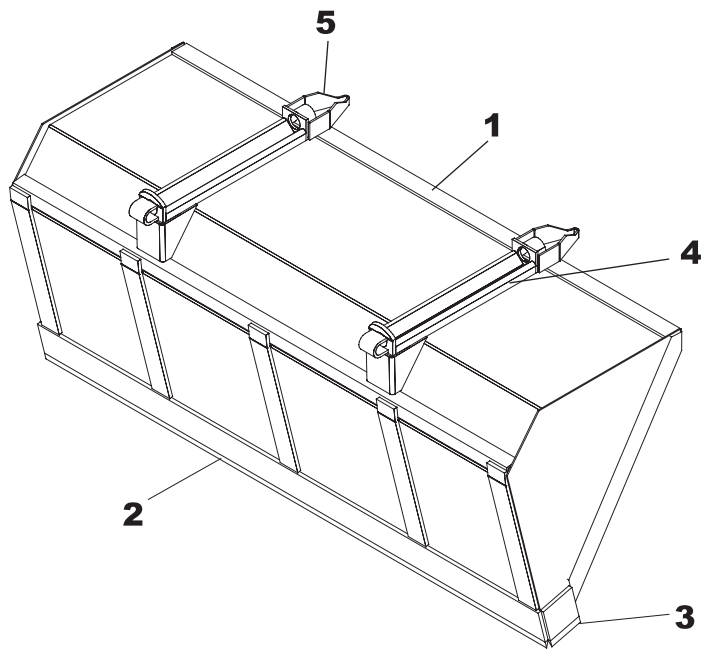
- When disassembling cylinders, keep the parts in correct orientation. Remove parts in sequence.
- Note the direction of the piston and gland. Lay out old seals and parts as they are removed.
- Assemble cylinder in the proper order; lubricate to aid assembly.

## OPTIONAL 3-1/2" LIFT CYLINDER REPLACEMENT PARTS

Ref.	Part No.	Description	Qty.
1	L-36	CYLINDER COMPLETE	1
2	L-3601	CYLINDER BARREL	1
3	L-3610	CYLINDER RAM	1
4	OR-214	O-RING	1
5	G-P	GLAND	1
6	P-I	PISTON	1
7	HJN1614	HEX JAM NUT	1
8	HFN1614	HEX NUT - STD	1
9	OLT-2	OIL LINE	1
10	BAND-15	METAL BAND	1
11	ZER1805	GREASE FITTING	2
12	#33CK	SEAL REPAIR KIT (L-36)*	-

**NOTE:** \*Contains: O-Rings, Back-up Washers, Piston Rings, Snap Ring, and Seal to repair one cylinder.

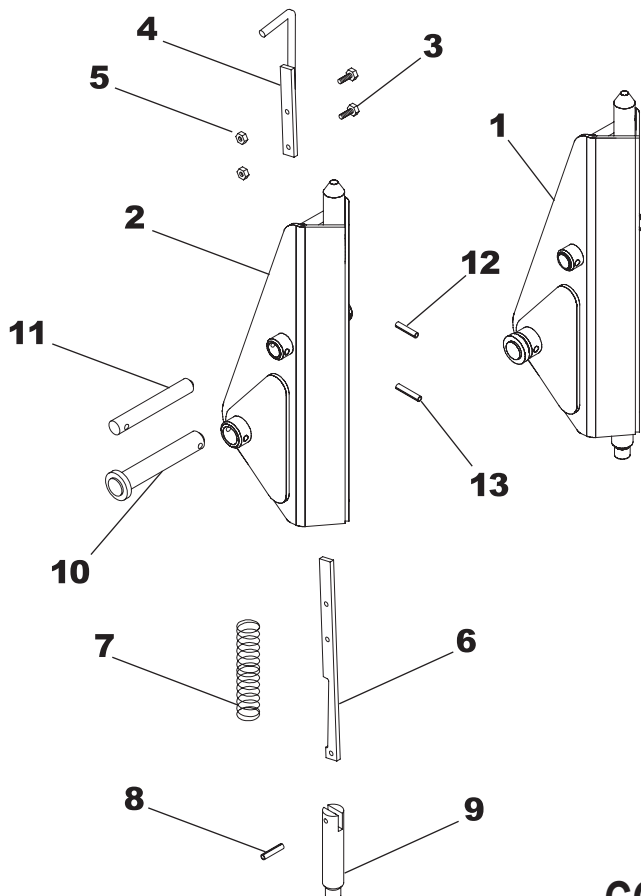




## BUCKET

Ref.	Part No.	Description	Qty.
1	84Q425	84" BUCKET COMPLETE*	-
1	90Q425	90" BUCKET COMPLETE*	-
1	96Q429	96" BUCKET COMPLETE*	-
2	SB-14	84" CUTTING BLADE*	-
2	LB-14	90" CUTTING BLADE*	-
2	CB-14	96" CUTTING BLADE*	-
3	SB-15	SIDE BLADE	2
4	C-2	RECEIVER ADAPTER	2
5	JB-22	ATTACH GUIDE (OPTION)	2

**NOTE:** \*Depends on width--measure width to get right part.



## SNAP-ATTACH™ COUPLER (C-4)

Ref.	Part No.	Description	Qty.
1	QC-201CCOM	SNAP ATTACH (COMPLETE)	1
2	QC-1201AS	SNAP ATTACH (SHELL)	1
3	HHS0518016	5/16" X 1" BOLT	2
4	QC-6AAS	HANDLE	1
5	HTN0518	5/16" LOCK NUT	2
6	QC-8C	LATCH	1
7	QC-12	SPRING	1
8	RLP0500020	ROLL PIN	1
9	QC-3A	PLUNGER	1
10	QC-206AAS	PIN ROUND HEAD	1
11	LF-51A	PIN	1
12	DRP0600028	DOUBLE ROLL PIN	1
13	DRP0600032	DOUBLE ROLL PIN	1

**NOTE:** Qty. shows the number of parts you will receive if you place an order using these part numbers.

C-4 is two(QC-201COM) couplers.

## COSMETICS

Ref.	Part No.	Description	Qty.	Ref.	Part No.	Description	Qty.
1	DEC-46	DECAL KIT	1	3	V-9524-P	PINT BLACK PAINT	1
2	V-5403-A	RED SPRAY PAINT	1	4	V-9524-Q	QUART BLACK PAINT	1
	V-9524-A	BLACK SPRAY PAINT	1	5	V-9524-G	GALLON BLACK PAINT	1

**NOTE:** Warning decals are available at no charge. If they become damaged or missing, order part numbers DEC-45.