

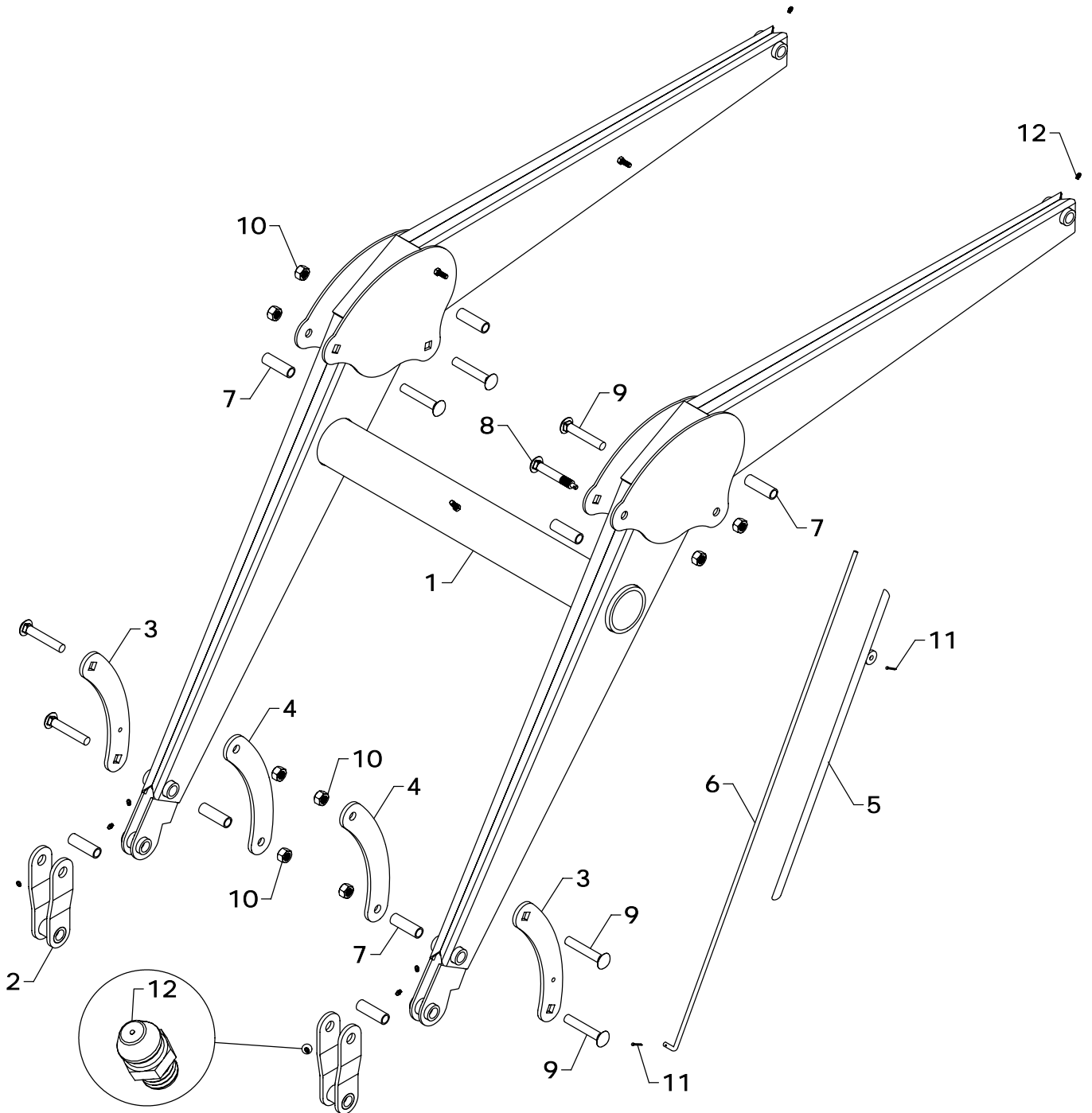
## TA-180 LOADER TOWER REPLACEMENT PARTS

REF #	PART #	DESCRIPTION	QTY.
1	MDT-12AS - R	TOWER (RIGHT)	1
2	MDT-12AS - L	TOWER (LEFT)	1
3	MDT-5	SIDE RAIL SPACER	2
4	MDT-6	LATCH	2
5	OH048	FRONT WRAP	1
6	B-930	INSERT BUSHING	4
7	BUS-58	BUSHING	2

REF #	PART #	DESCRIPTION	QTY.
8	HHS1011028	5/8" X 1 3/4" BOLT	2
9	HHS1011040	5/8" X 2 1/2" BOLT	4
10	CBF1210072	3/4" X 4 1/2" CARRIAGE BOLT	2
11	CBF1210080	3/4" X 5" CARRIAGE BOLT	2
12	HTN1011	5/8" LOCK NUT	6
13	HTN1210	3/4" LOCK NUT	4

WESTENDORFMFG PWB114130

WESTENDORF MFG CO., INC. • PH: (712) 423-2762 • FAX: (712) 423-1460 • sales@westendorfmfg.com • www.loaders.com



TA-180 LOADER FRAME REPLACEMENT PARTS

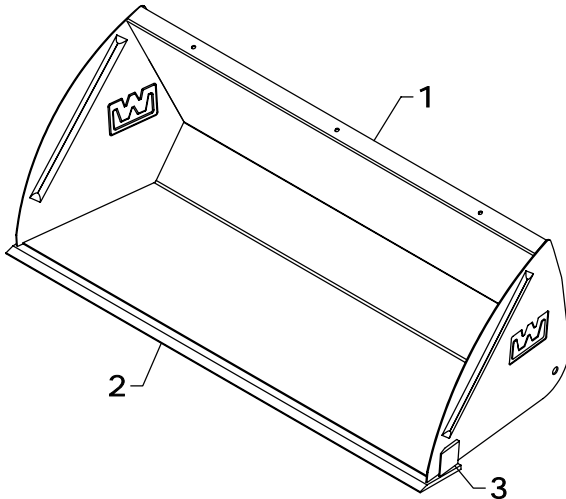
REF #	PART #	DESCRIPTION	QTY
1	MDF-8AS	FRAME	1
2	MDF-15AS	LINKAGE	2
3	MDF-10	OUTSIDE PIVOT STRAP	2
4	MDF-11	INSIDE PIVOT STRAP	2
5	MF-50AS	GAUGE ROD HOLDER	1
6	RF-49	INNER GAUGE ROD	1

REF #	PART #	DESCRIPTION	QTY
7	B-931	INSERT BUSHING	8
8	MAF-169	GAUGE ROD PIN	1
9	CBF1210072	3/4" X 4 1/2" CARRIAGE BOLT	7
10	HTN1210	3/4" LOCK NUT	8
11	CTK0200016	1/8" X 1" COTTER KEY	2
12	ZER1805	GREASE FITTING	8

WESTENDORFMFG PWB114130

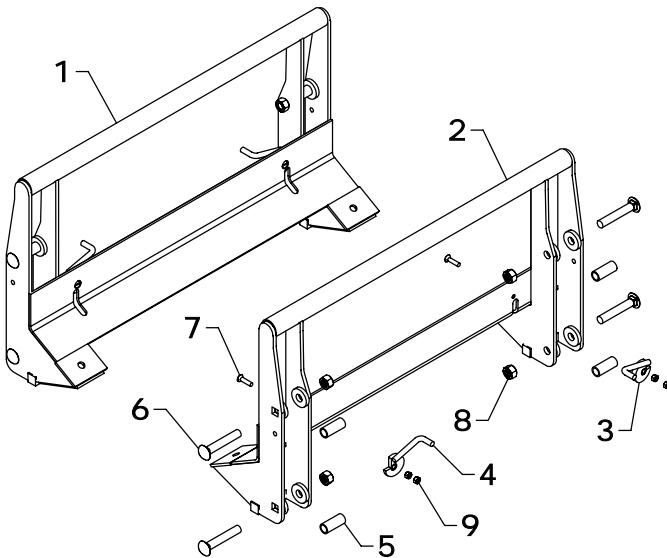
WESTENDORF MFG. CO., INC. • PH:(712) 423-2762 • FAX: (712) 423-1460 • sales@westendormfg.com • www.loaders.com

## TA-180 BUCKETS



REF #	PART #	DESCRIPTION	QTY.
1	60Q109-SB	60" TAPERED BUCKET	1
	66Q110-SB	66" TAPERED BUCKET	1
	72Q112-SB	72" TAPERED BUCKET	1
	60QS13	60" SKID STEER BUCKET (OPTIONAL)	1
	66QS14	66" SKID STEER BUCKET (OPTIONAL)	1
	72QS15	72" SKID STEER BUCKET (OPTIONAL)	1
2	AB-14	60" BLADE	1
	IB-14	66" BLADE	1
	JB-14	72" BLADE	1
3	MB-115	SIDE BLADE	2

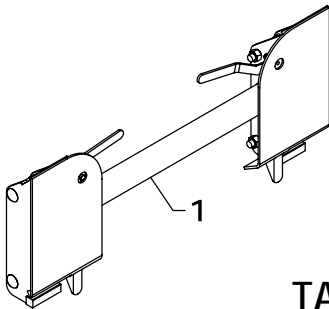
*NOTE: \*Check width of the bucket and use the part number that matches. If your size is not shown, contact Westendorf Mfg. Co.*



## TA-180 QUICK COUPLER (C-8)

REF #	PART #	DESCRIPTION	QTY
1	C-8	COUPLER COMPLETE	1
2	QC-801AS	COUPLER	1
3	QC-811AS-R	LATCH (RIGHT)	1
4	QC-811AS-L	LATCH (LEFT)	1
5	MF-230	INSERT BUSHING	4
6	CBF1210072	3/4" X 4 1/2" CARRIAGE BOLT	4
7	SBC0616024	3/8" X 1 1/2" FLAT HEAD BOLT	2
8	HTN1210	3/4" LOCK NUT	4
9	HTN0616	3/8" LOCK NUT	4

## TA-180 OPTIONAL SKID STEER COUPLER (C-22)



REF #	PART #	DESCRIPTION	QTY
1	C-22	SKID STEER COUPLER	1

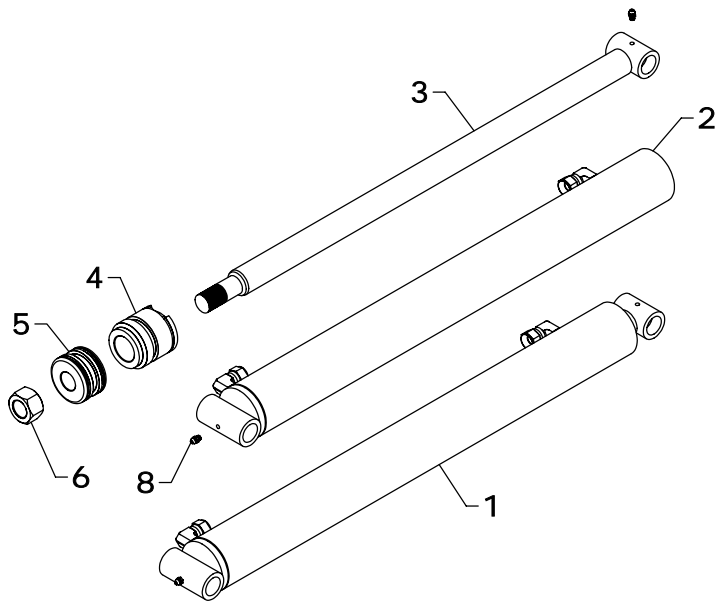
## TA-180 COSMETICS

REF #	PART #	DESCRIPTION	QTY.
1	DEC-180	DECAL KIT (TA-180)	1
	DEC-170	DECAL KIT (TA-170)	1
2	V-5403-A	RED SPRAY PAINT	1
	V-9524-A	BLACK SPRAY PAINT	1

REF #	PART #	DESCRIPTION	QTY
3	V-9524-P	PINT BLACK PAINT	1
4	V-9524-Q	QUART BLACK PAINT	1
5	V-9524-G	GALLON BLACK PAINT	1

*NOTE: Warning decals are available at no charge. If they become damaged or missing, order part numbers DE-DWWS, DE-WWWS, DE-PP, AND DE-180.*

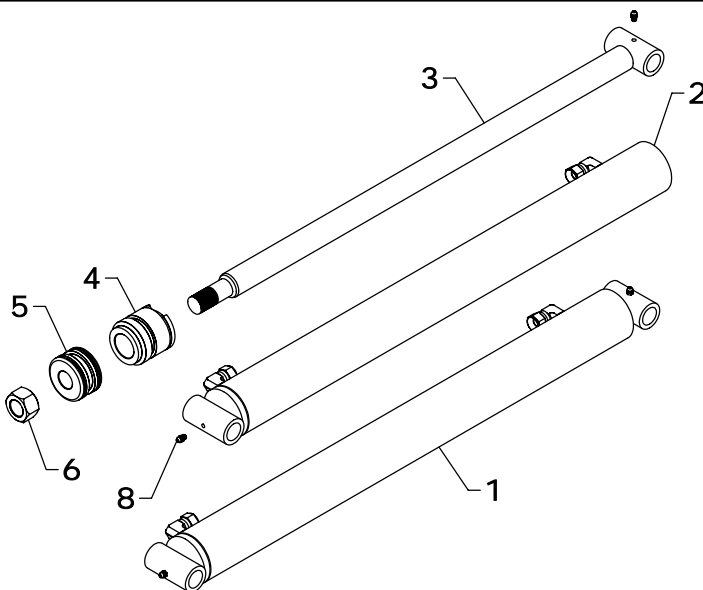
WESTENDORFMFG PWB114130



## TA-180 BUCKET CYLINDER REPLACEMENT PARTS

REF #	PART #	DESCRIPTION	QTY.
1	B-39	BUCKET CYLINDER	1
2	B-3901	BARREL	1
3	B-3910	RAM	1
4	G-A	GLAND	1
5	P-A	PISTON	1
6	HFN1614	1" NUT	1
8	ZER1805	GREASE FITTING	2
9	#1CK	SEAL KIT	*

*NOTE: \* Seal kit contains parts to repair one cylinder*



## TA-180 LIFT CYLINDER REPLACEMENT PARTS

REF #	PART #	DESCRIPTION	QTY.
1	L-38	LIFT CYLINDER	1
2	L-3801	BARREL	1
3	L-3810	RAM	1
4	G-A	GLAND	1
5	P-A	PISTON	1
6	HFN1614	1" NUT	1
8	ZER1805	GREASE FITTING	2
9	#1CK	SEAL KIT	*

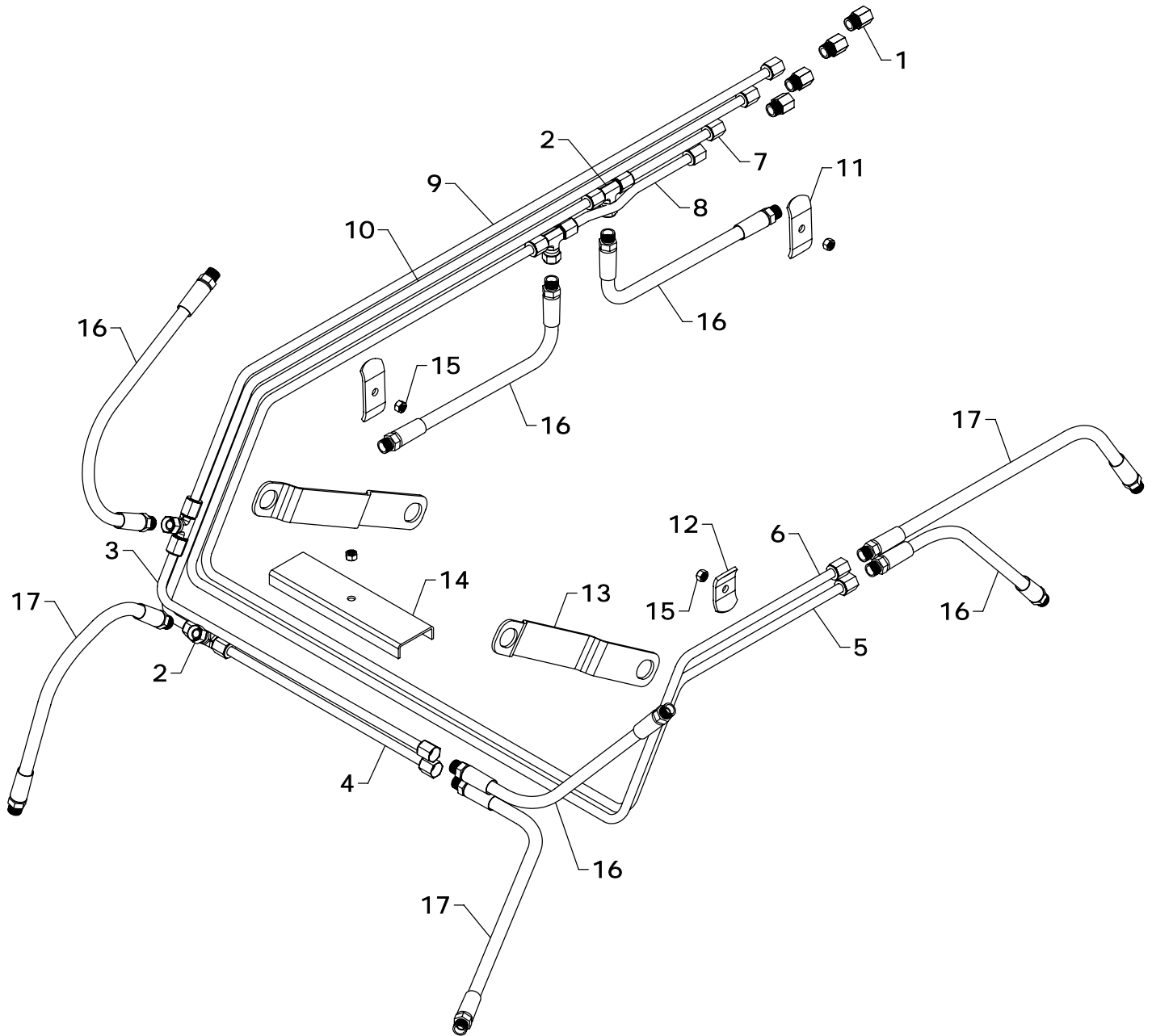
*NOTE: \* Seal kit contains parts to repair one cylinder*

### STEPS TO REPAIR CYLINDER

- 1) Extend the ram out as far as possible.
- 2) At the ram end of the cylinder barrel you will find a snap ring located either on the face or inside the notch of the gland.
- 3) Locate the snap ring eyes (you may need to turn the gland inside the barrel to find the snap ring eyes). Compress the snap ring with snap ring pliers.
- 4) Remove the ram assembly (ram, gland, & piston) from barrel.
- 5) Notice the direction they're pointing so they can be properly re-assembled.
- 6) Remove the jam nut and/or hex nut from the end of the ram.
- 7) Remove the old seals and rings and replace them with the new seals and rings. (Seal kits are packaged for several different cylinders. You may have extra parts)
- 8) Clean cylinder with cleaner and a clean lint free cloth.
- 9) Lubricate the seals and rings to aid assembly.
- 10) Assemble the cylinder by reversing the order.

### CYLINDER REPAIR TIPS

- When disassembling cylinders, keep the parts in correct orientation. Remove parts in sequence.
- Note the direction of the piston and gland. Lay out old seals and parts as they are removed.
- Assemble cylinder in proper order; lubricate to aid assembly.



## TA-180 HYDRAULICS

REF #	PART #	DESCRIPTION	QTY.
1	PF-FFC8	FEMALE CONNECTOR	4
2	PF-FSBT8	SWIVEL NUT TEE	4
3	OLT-445	OIL LINE	1
4	OLT-447	OIL LINE	1
5	OLT-479	OIL LINE	1
6	OLT-480	OIL LINE	1
7	OLT-481	OIL LINE	1
8	OLT-482	OIL LINE	1
9	OLT-483	OIL LINE	1

REF #	PART #	DESCRIPTION	QTY.
10	OLT-484	OIL LINE	1
11	OH-3	OIL LINE HOLDER	2
12	OH-6	OIL LINE HOLDER	1
13	OH-21	OIL LINE HOLDER	2
14	OH-11	OIL LINE HOLDER	1
15	HTN0616	3/8" LOCK NUT	4
16	H06020-FF	3/8" X 20" HOSE	5
17	H06030-FF	3/8" X 30" HOSE	3