

TA-160 LOADER TOWER & FRAME REPLACEMENT PARTS

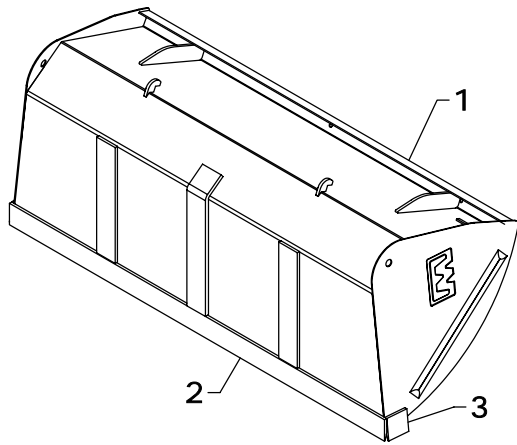
REF #	PART #	DESCRIPTION	QTY.
1	MCT-12AS - R	TOWER (RIGHT)	1
2	MCT-12AS - L	TOWER (LEFT)	1
3	MCF-4AS	FRAME	1
4	QC-1606AS	BUCKET STOP	2
5	MF-50AS	GAUGE ROD HOLDER	1
6	MCF-49	GAUGE ROD	1
7	0H033	FRONT WRAP	1
8	MAF-169	GAUGE ROD PIN	1
9	B-930	INSERT BUSHING	4
10	B-931	INSERT BUSHING	6

REF #	PART #	DESCRIPTION	QTY.
11	MF-230	INSERT BUSHING	2
12	MCF-48	SQUARE HEAD WASHER	4
13	MT-331	SPACER WASHER	4
14	CBF1210072	3/4" X 4 1/2" CARRIAGE BOLT	11
15	HTN1210	3/4" LOCK NUT	11
16	FSS0820032	1/2" X 2" SOCKET HEAD CAP SCREW	6
17	12WN	NUT	6
18	CTK0200016	1/8" X 1" COTTER KEY	2
19	ZER1805	GREASE FITTING	4

*NOTE: * Varies by tractor (Standard Front Wrap is 0H033).
NOTE: When using C-23 skid steer coupler, bucket stops are not needed.*

WESTENDORFMFG PWB117150

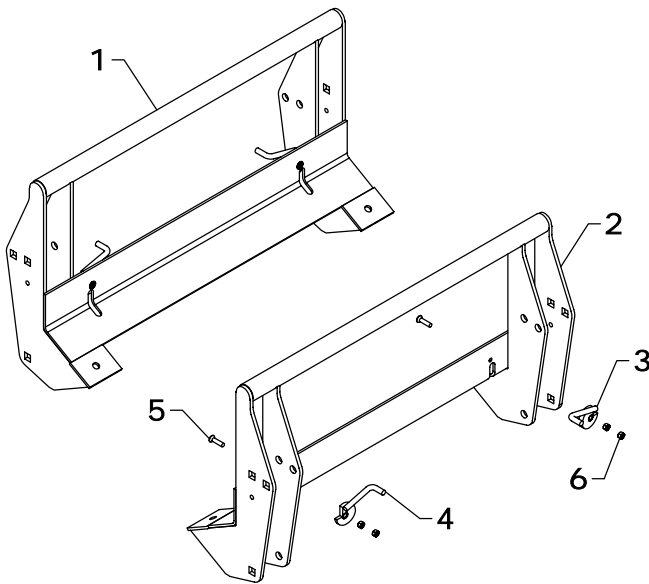
WESTENDORF MFG. CO., INC. • PH:(712) 423-2762 • FAX: (712) 423-1460 • sales@westendormfg.com • www.loaders.com



TA-160 BUCKET

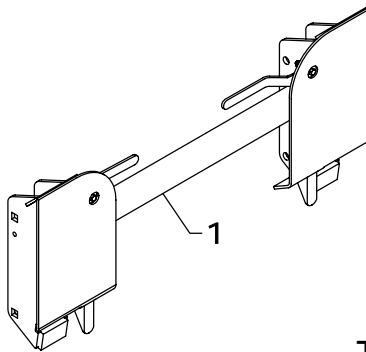
REF #	PART #	DESCRIPTION	QTY.
1	60Q109-SB	60" TAPERED BUCKET	1
	66Q110-SB	66" TAPERED BUCKET	1
	60QS13	60" SKID STEER BUCKET (OPTIONAL)	1
	66QS14	66" SKID STEER BUCKET (OPTIONAL)	1
2	MB-114	60" BLADE	1
	IB-14	66" BLADE	1
3	MB-115	SIDE BLADE	2

*NOTE: *Check width of the bucket and use the part number that matches. If your size is not shown, contact Westendorf Mfg. Co.*



TA-160 QUICK COUPLER (C-16)

REF #	PART #	DESCRIPTION	QTY.
1	C-16	COUPLER COMPLETE	1
2	QC-1601AS	COUPLER	1
3	QC-811AS-R	LATCH (RIGHT)	1
4	QC-811AS-L	LATCH (LEFT)	1
5	SBC0616024	3/8" X 1 1/2" FLAT HEAD SCREW	2
6	HTN0616	3/8" LOCK NUT	4



TA-160 OPTIONAL SKID STEER COUPLER (C-23)

REF #	PART #	DESCRIPTION	QTY.
1	C-23	SKID STEER COUPLER	1

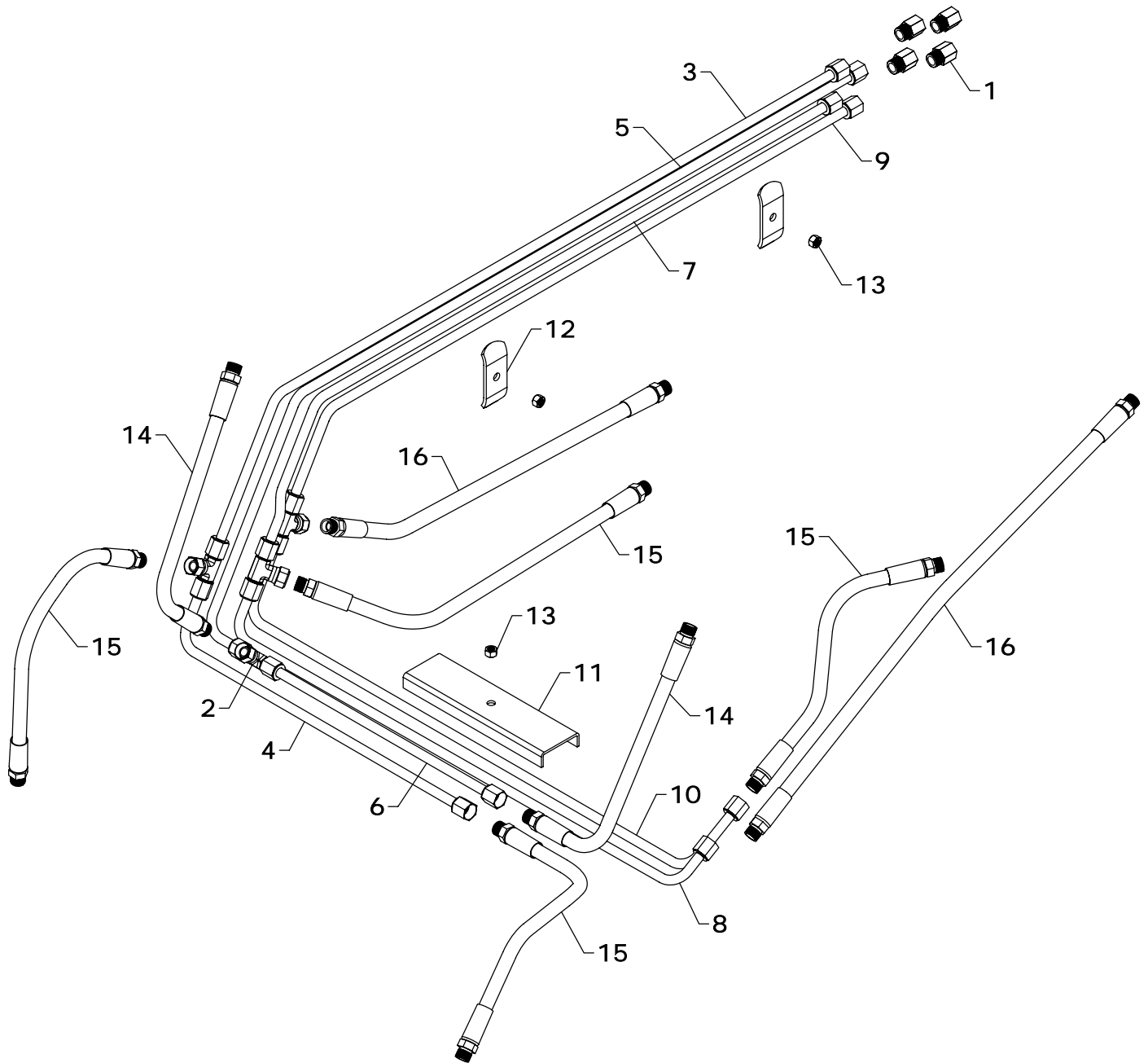
TA-160 COSMETICS

REF #	PART #	DESCRIPTION	QTY.
1	DEC-160	DECAL KIT	1
2	V-5403-A	RED SPRAY PAINT	1
	V-9524-A	BLACK SPRAY PAINT	1

REF #	PART #	DESCRIPTION	QTY.
3	V-9524-P	PINT BLACK PAINT	1
4	V-9524-Q	QUART BLACK PAINT	1
5	V-9524-G	GALLON BLACK PAINT	1

NOTE: Warning decals are available at no charge. If they become damaged or missing, order part numbers DE-DWWS, DE-WWWS, DE-PP, and DE-160.

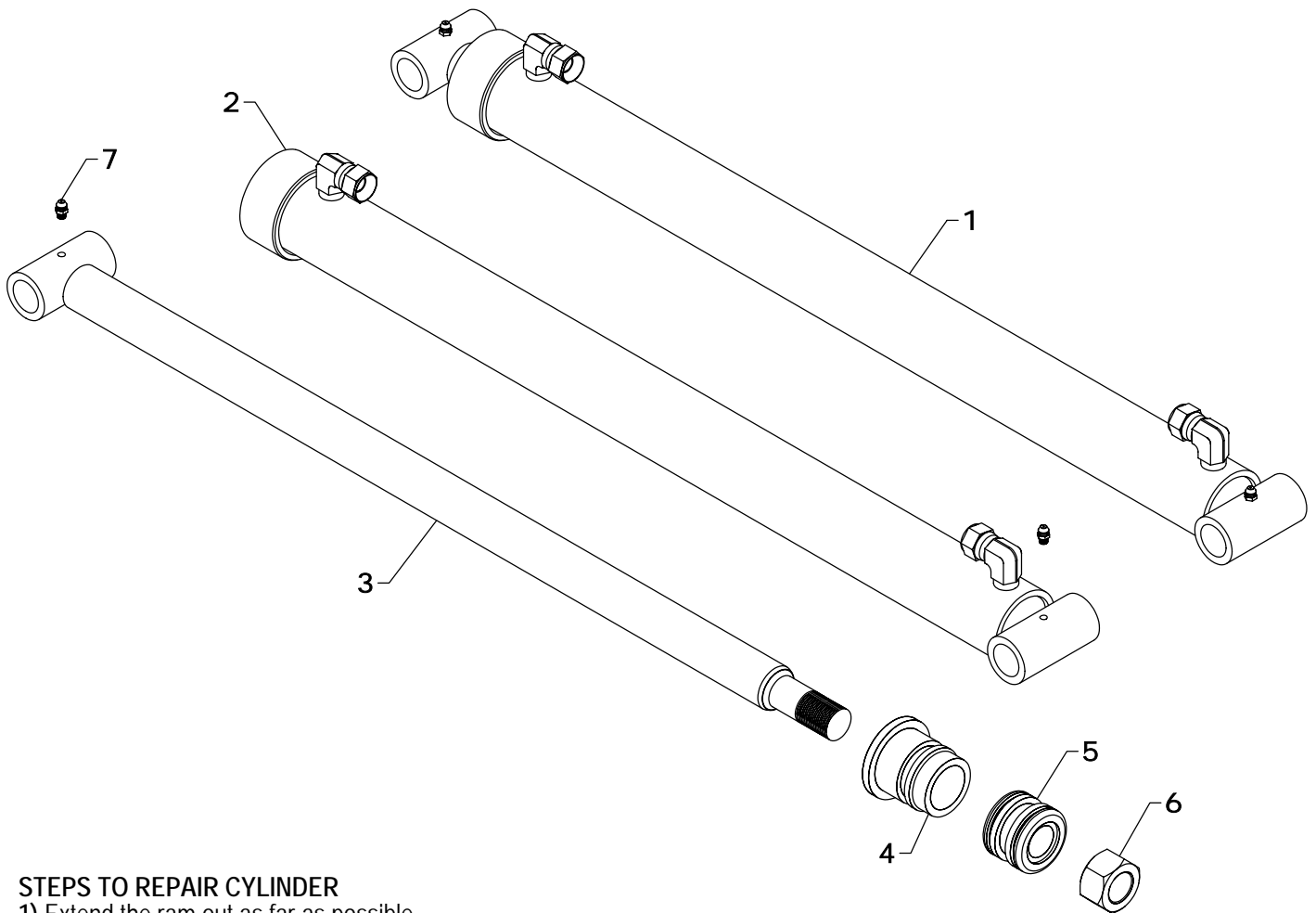
WESTENDORFMFG PWB117150



TA-160 HYDRAULICS

REF #	PART #	DESCRIPTION	QTY.
1	PF-FFC8	FEMALE CONNECTOR	4
2	PF-FSBT8	SWIVEL NUT TEE	4
3	OLT-444	OIL LINE	1
4	OLT-445	OIL LINE	1
5	OLT-446	OIL LINE	1
6	OLT-447	OIL LINE	1
7	OLT-448	OIL LINE	1
8	OLT-449	OIL LINE	1

REF #	PART #	DESCRIPTION	QTY.
9	OLT-450	OIL LINE	1
10	OLT-451	OIL LINE	1
11	OH-11	OIL LINE HOLDER	1
12	OH-3	OIL LINE HOLDER	2
13	HTN0616	3/8" LOCK NUT	3
14	H06020-FF	3/8" X 20" HOSE	2
15	H06030-FF	3/8" X 30" HOSE	4
16	H06040-FF	3/8" X 40" HOSE	2



STEPS TO REPAIR CYLINDER

- 1) Extend the ram out as far as possible.
- 2) At the ram end of the cylinder barrel you will find a snap ring located either on the face or inside the notch of the gland.
- 3) Locate the snap ring eyes (you may need to turn the gland inside the barrel to find the snap ring eyes). Compress the snap ring with snap ring pliers.
- 4) Remove the ram assembly (ram, gland, & piston) from barrel.
- 5) Notice the direction they're pointing so they can be properly re-assembled.
- 6) Remove the jam nut and/or hex nut from the end of the ram.
- 7) Remove the old seals and rings and replace them with the new seals and rings. (Seal kits are packaged for several different cylinders. You may have extra parts)
- 8) Clean cylinder with cleaner and a clean lint free cloth.
- 9) Lubricate the seals and rings to aid assembly.
- 10) Assemble the cylinder by reversing the order.

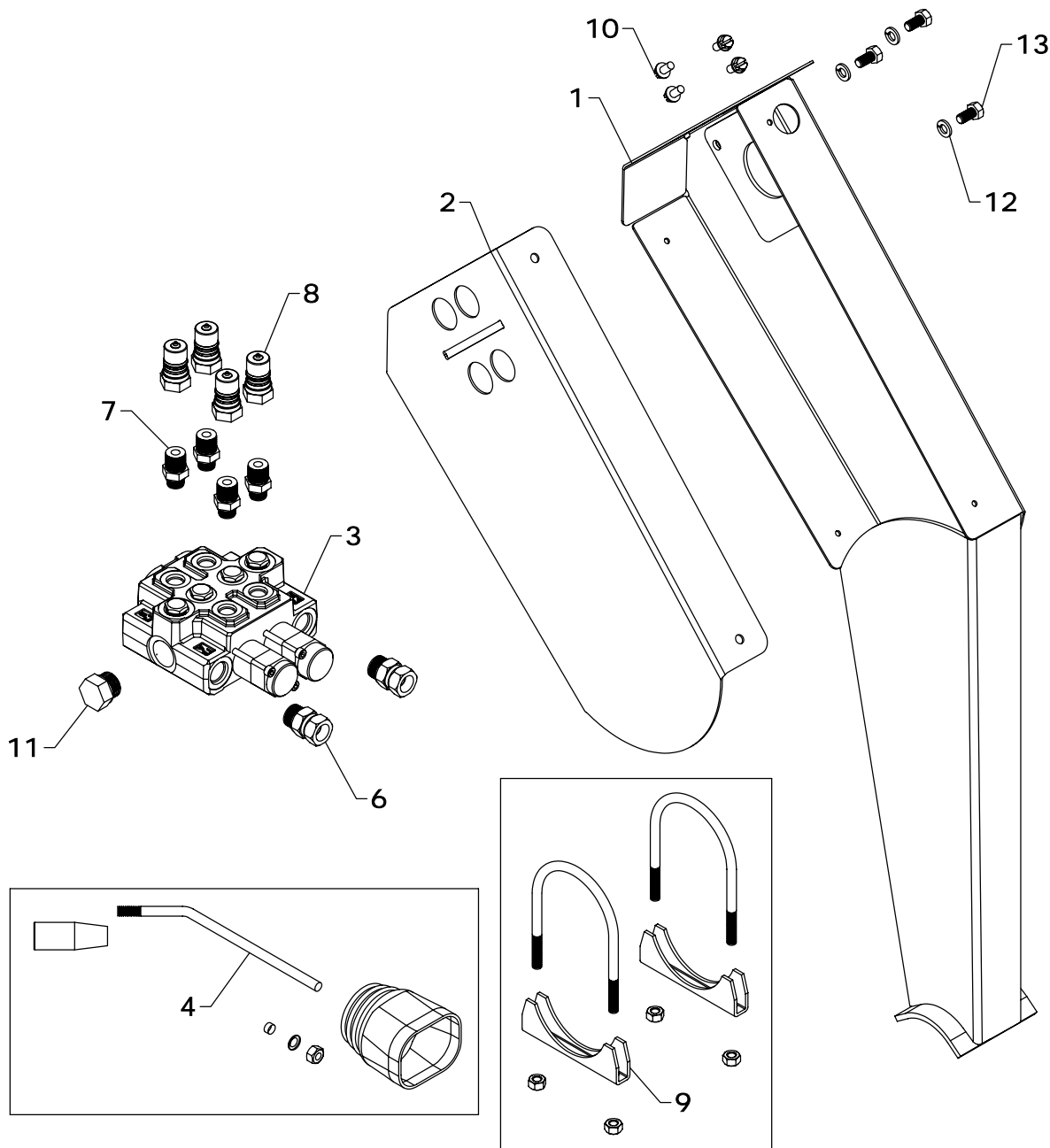
CYLINDER REPAIR TIPS

- When disassembling cylinders, keep the parts in correct orientation. Remove parts in sequence.
- Note the direction of the piston and gland. Lay out old seals and parts as they are removed.
- Assemble cylinder in proper order; lubricate to aid assembly.

TA-160 BUCKET & LIFT CYLINDER REPLACEMENT PARTS

REF #	PART #	DESCRIPTION	QTY
1	B-9	CYLINDER	1
2	B-901	BARREL	1
3	B-910	RAM	1
4	G-H	GLAND	1
5	P-C	PISTON	1
6	HFN1614	1" NUT	1
7	ZER1805	GREASE FITTING	2
8	#7CK	SEAL KIT	1

*NOTE: * Seal kit contains parts to repair one cylinder*



KVJ-15 VALVE

REF #	PART #	DESCRIPTION	QTY
1	VP-171-01	VALVE PLATE	1
2	VP-171-02	VALVE COVER	1
3	OC-2NB	VALVE	1
4	VJ-302COM	HANDLE KIT	1
5	DE-VJ1	DECAL (NOT SHOWN)	1
6	PF-OS0806	SWIVEL ADAPTER	2
7	PF-OA06	9/16" O-Ring - 3/8" MALE ADAPTOR	4

REF #	PART #	DESCRIPTION	QTY
8	LM-110	MALE COUPLER	4
9	EXH-72	3" EXHAUST CLAMP	2
10	STW1214008	7/32" X 1/2" HEX HEAD SCREW	4
11	PF-PO10	7/8"-14 HEX HEAD PLUG	1
12	LWM05	5/16" LOCK WASHER	3
13	HHS0518010	5/16" X 5/8" BOLT	3

NOTE: Hoses are included in the Bracket Mounting Instruction.

MANIFOLD		
PART #	DESCRIPTION	QTY
MA-26	MANIFOLD	1