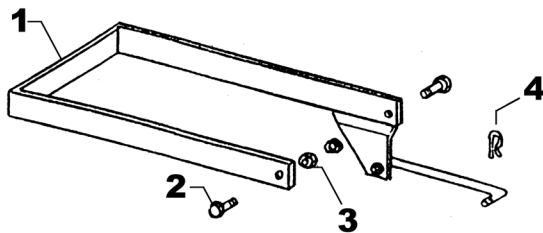


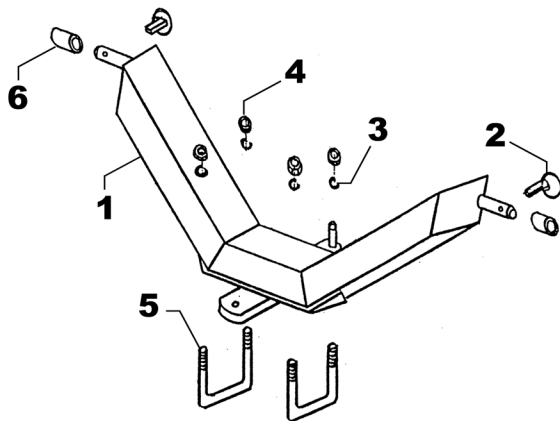
TOWER

Ref.	Part No.	Description	Qty.
1	HM-101	TOWER	1
2	HM-25A	TOP LINK PIN	1
3	18EHP	HAIR PIN	2
4	HM-26	CLEVIS PIN	1
5	CTK0250032	COTTER PIN	1



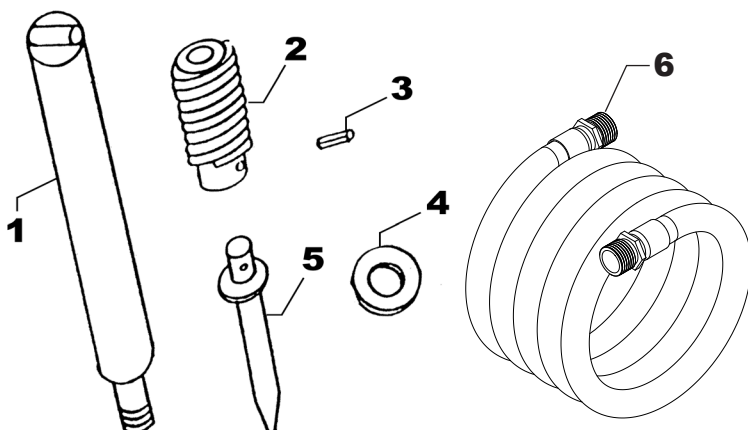
SAFETY TRIP

Ref.	Part No.	Description	Qty.
1	HM-103	SAFETY TRIP	1
2	HHS0616020	3/8" X 1-1/4" BOLT	2
3	HTN0616	3/8" SELF LOCKING NUT	2
4	CTK0200016	COTTER PIN	1



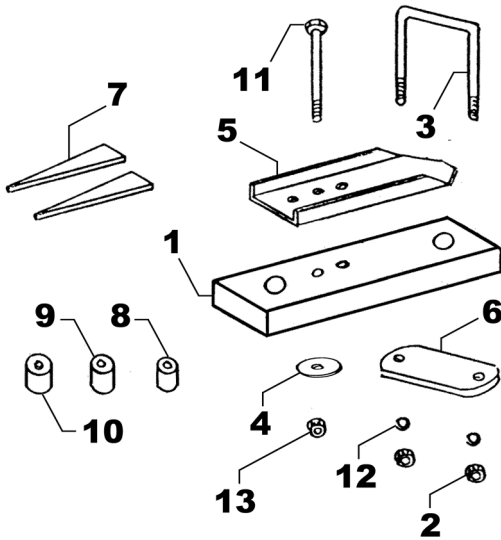
MAIN FRAME

Ref.	Part No.	Description	Qty.
1	HM-1	MAIN FRAME	1
2	QLP0700024	QUICK PIN	2
3	LWM10	5/8" LOCK WASHER	4
4	HFN1011	5/8" NUT	4
5	HM-119	U-BOLT	2
6	HM-32	BUSHING	2



CYLINDER

Ref.	Part No.	Description	Qty.
1	M-1	CYLINDER	1
2	HM-27AAS	SPRING ASSEMBLY	1
3	RLP0400024	1/4" X 1-1/2" ROLL PIN	1
4	HM-124	1-9/16" WASHER	1
5	HM-20	HITCH PIN - 7/8"	1
	HM-21	HITCH PIN - 1"	1
6	HK-23	2 - 3/8" X 52" HOSE	1

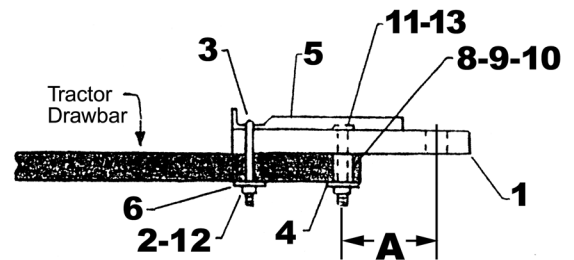
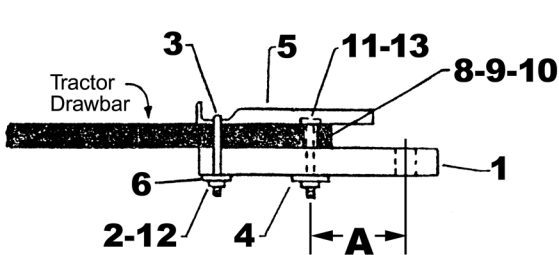


OPTIONAL DRAW BAR EXTENSION

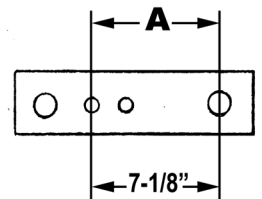
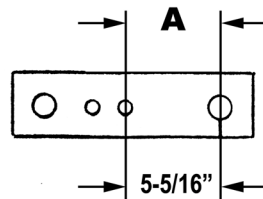
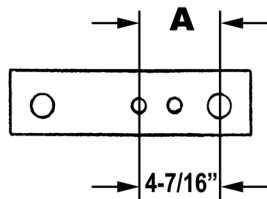
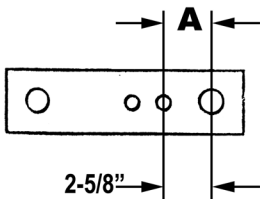
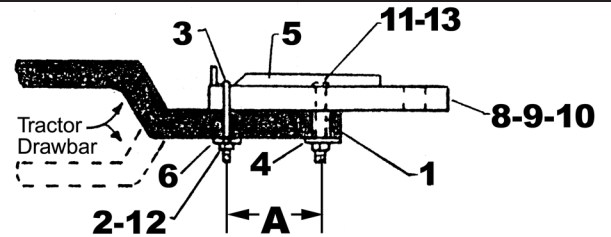
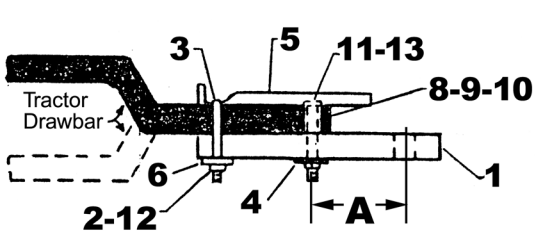
Ref.	Part No.	Description	Qty.
1	HM-125	DRAW BAR EXTENSION	1
2	HFN1011	5/8" NUT	2
3	HM-126	U-BOLT	1
4	FWW12	3/4" FLAT WASHER	1
5	HM-128	SIDE PLATE	1
6	HM-127	CLAMP PLATE	1
7	HM-135A	WEDGE PLATE	2
8	HM-129	1" O.D. FILLER BUSHING	1
9	HM-130	1-1/8" O.D. FILLER BUSHING	1
10	HM-131	1-1/4" O.D. FILLER BUSHING	1
11	HHS1210080	3/4" X 5" BOLT	1
12	LWM10	5/8" LOCK WASHER	2
13	HTN1210	3/4" LOCK NUT	1

Use Extension Adapter as Required in Step 5 of Mounting Instructions

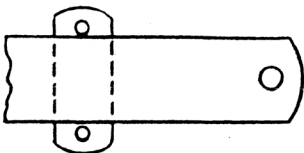
Options for Draw Bar Extension on tractors with STRAIGHT Draw Bars



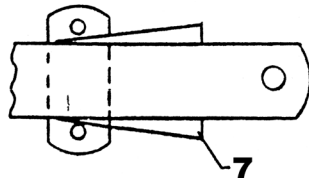
Options for Draw Bar Extension on tractors with OFFSET Draw Bars



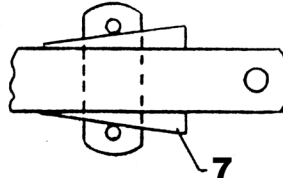
3-1/2" draw bar doesn't need #7 adapter.



3-1/4" to 3" draw bars use smaller end of wedge plate as filler.



2-3/4" to 2-1/2" draw bars use middle of wedge plate as filler.



2-3/8" to 2-1/4" draw bars use top level of wedge plate as filler.

