

GF-196-3D CAT CLAW GRAB FORK REPLACEMENT PARTS

REF #	PART #	DESCRIPTION	QTY.
1	GF-701AS	FRAME	1
2	GF-637KIT	REPLACEMENT TOOTH KIT	6
3	GF-645 KIT	BUCKET ATTACH KIT	1
4	GF-742 KIT	HOSE COVER KIT	1
5	GF-613 KIT	BUCKET STOP KIT	1
6	GF-640 KIT	GRAB FORK STAND KIT	1
7	GF-414 KIT	CYLINDER ATTACH KIT	2
8	GF-646AS	PIN	2
9	M-16	CYLINDER	2
10	LMF-17	PIN HEAD	2
11	LMF-18	PIN	2
12	RLP0700036	7/16" ROLL PIN	2
13	QLP0400028	LYNCH PIN	2
14	ZER1805	GREASE FITTING	6
15	PF-HPFT06	3/8" SWIVEL TEE	2
16	OH-6	OIL LINE HOLDER	1
17	HHS0616024	3/8" X 1 1/2" BOLT	1

REF #	PART #	DESCRIPTION	QTY.
18	HTN0616	3/8" LOCK NUT	1
19	HK-20	2 - 3/8" X 96" (NOT SHOWN)	1
20	HK-120	2 - 3/8" X 36" (NOT SHOWN)	1
		2 - 3/8" X 96" (NOT SHOWN)	1

FOR USE WITH GF-196-3DA

REF #	PART #	DESCRIPTION	QTY.
21	LM-13	HIGH PRESSURE FEMALE COUPLER	1
22	LM-14	HIGH PRESSURE MALE COUPLER	1
23	PF-HB0608	1/2" - 3/8" HEX BUSHING	2

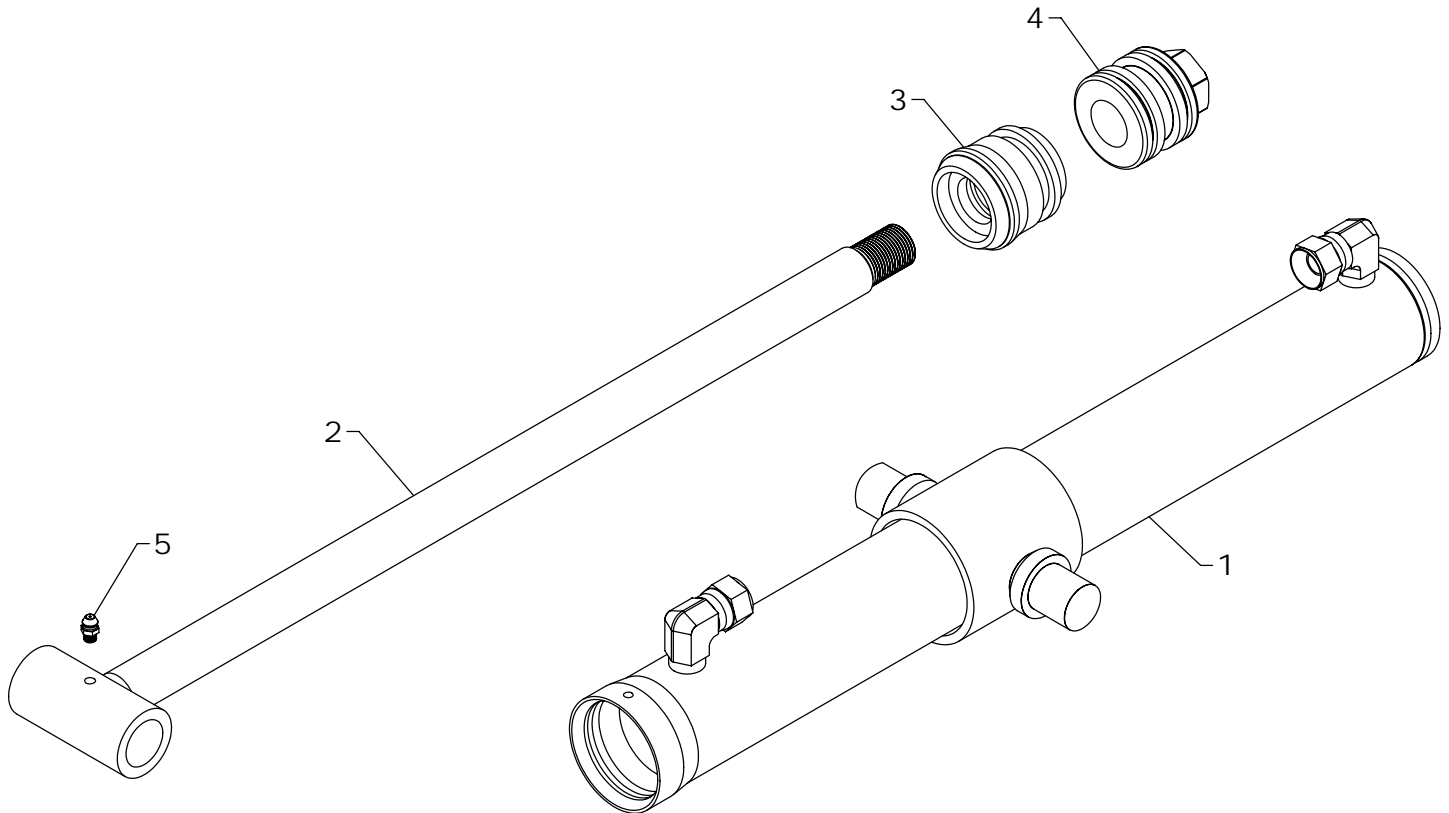
FOR USE WITH GF-196-3DH

REF #	PART #	DESCRIPTION	QTY.
24	LM-121COM	MANIFOLD HANDLE	1
25	PF-HB0608	1/2" - 3/8" HEX BUSHING	2

NOTE: See next page for cylinder breakdown.

WESTENDORFMFG SJG316170

WESTENDORF MFG CO., INC. • PH: (712) 423-2762 • FAX: (712) 423-1460 • sales@westendorfmfg.com • www.loaders.com



STEPS TO REPAIR CYLINDER

- 1) With ram fully extended, remove snap ring or spiral retaining ring from gland at barrel end of cylinder.
 - SNAP RING: Rotate gland until snap ring eyes are visible. Compress with snap ring pliers to remove.
 - RETAINING RING: Gently drive gland into the barrel using a non marring punch to remove retaining ring with a long nose pliers.
- 2) Remove ram assembly (ram, gland, and piston) from barrel.
- 3) Remove piston and gland from ram; be sure to notice the direction they are facing so cylinder can be reassembled properly
- 4) Remove old seals and rings and replace them with new seals and rings (you may have extra parts as kits are packaged for multiple cylinders).
- 5) Clean cylinder with cleaner and a lint free cloth.
- 6) Lubricate seals and rings and reassemble cylinder in reverse order.

REPAIR TIPS

- Remove parts in sequence and keep in correct orientation during disassembly
- Notice the direction of piston and gland. Lay out old seals and rings as they are removed.
- Assemble the cylinder in proper order; lubricate to aid assembly.

CAT CLAW CYLINDER REPLACEMENT PARTS

REF #	PART #	DESCRIPTION	QTY.
1	M-1601	BARREL	1
2	M-1610	RAM	1
3	G-V	GLAND	1
4	P-J	PISTON	1
5	ZER1805	GREASE FITTING	1
6	#41CK	SEAL KIT	*

*NOTE: * Repair kit contains parts to repair one cylinder*

WESTENDORFMFG SJG316170

WESTENDORF MFG. CO., INC. • PH: (712) 423-2762 • FAX: (712) 423-1460 • sales@westendorfmfg.com • www.loaders.com