

## GF-184-3D CAT CLAW GRAB FORK REPLACEMENT PARTS

REF #	PART #	DESCRIPTION	QTY.
1	GF-601AS	FRAME	1
2	GF-637KIT	REPLACEMENT TOOTH KIT	6
3	GF-645 KIT	BUCKET ATTACH KIT	1
4	GF-642 KIT	HOSE COVER KIT	1
5	GF-613 KIT	BUCKET STOP KIT	1
6	GF-640 KIT	GRAB FORK STAND KIT	1
7	GF-414 KIT	CYLINDER ATTACH KIT	2
8	GF-646AS	PIN	2
9	M-16	CYLINDER	2
10	LMF-17	PIN HEAD	2
11	LMF-18	PIN	2
12	RLP0700036	7/16" ROLL PIN	2
13	QLP0400028	LYNCH PIN	2
14	ZER1805	GREASE FITTING	6
15	PF-HPFT06	3/8" SWIVEL TEE	2
16	OH-6	OIL LINE HOLDER	1
17	HHS0616024	3/8" X 1 1/2" BOLT	1

REF #	PART #	DESCRIPTION	QTY.
18	HTN0616	3/8" LOCK NUT	1
19	HK-20	2 - 3/8" X 96" (NOT SHOWN)	1
20	HK-110	2 - 3/8" X 36" (NOT SHOWN)	1
		2 - 3/8" X 84" (NOT SHOWN)	1

### FOR USE WITH GF-184-3DA

REF #	PART #	DESCRIPTION	QTY.
21	LM-13	HIGH PRESSURE FEMALE COUPLER	1
22	LM-14	HIGH PRESSURE MALE COUPLER	1
23	PF-HB0608	1/2" - 3/8" HEX BUSHING	2

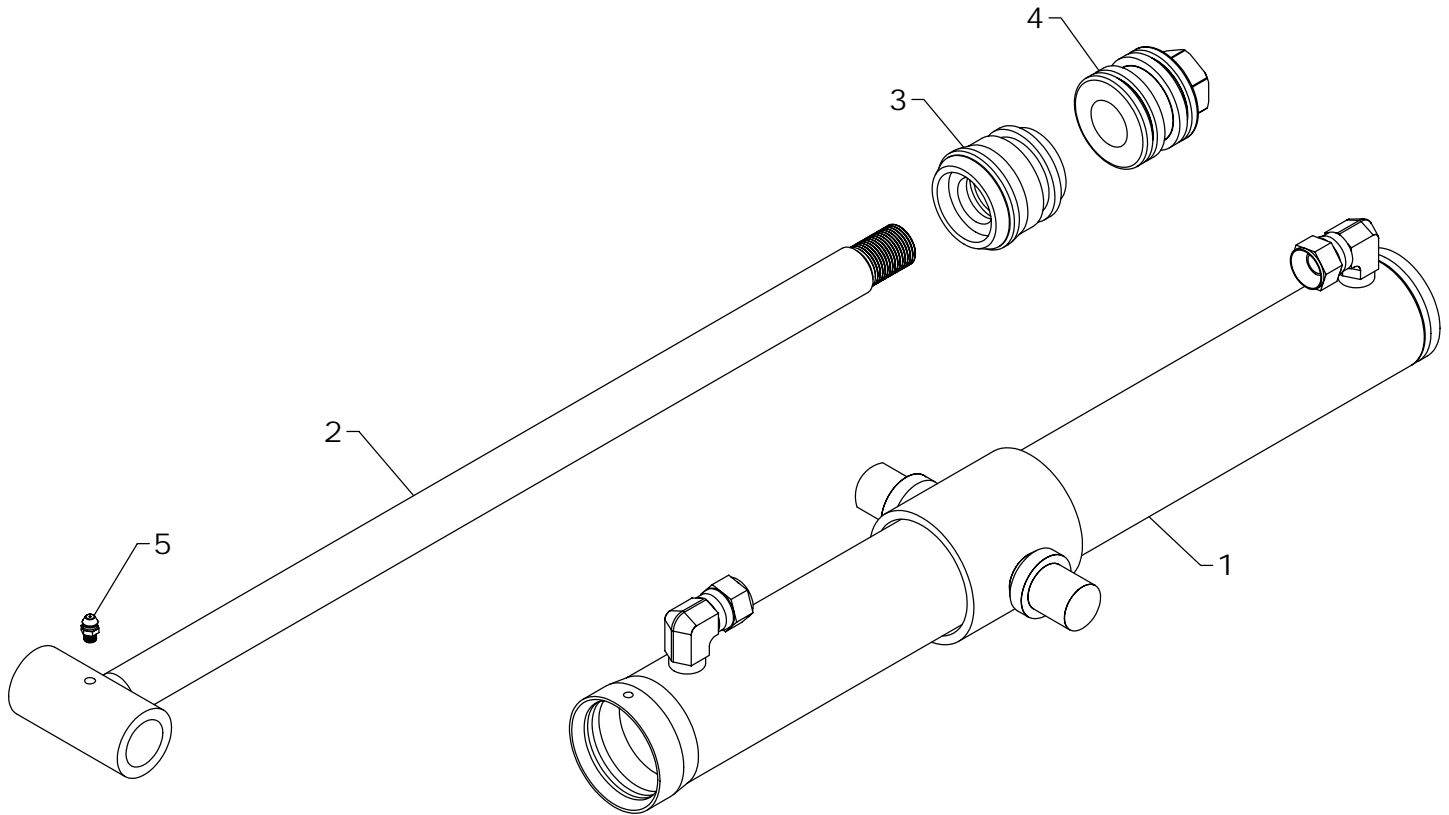
### FOR USE WITH GF-184-3DH

REF #	PART #	DESCRIPTION	QTY.
24	LM-121COM	MANIFOLD HANDLE	1
25	PF-HB0608	1/2" - 3/8" HEX BUSHING	2

*NOTE: See next page for cylinder breakdown.*

WESTENDORFMFG SJG315240

WESTENDORF MFG CO., INC. • PH: (712) 423-2762 • FAX: (712) 423-1460 • sales@westendorfmfg.com • www.loaders.com



## STEPS TO REPAIR CYLINDER

- 1) Extend the ram out as far as possible.
- 2) At the ram end of the cylinder barrel you will find a snap ring located either on the face of the gland or inside the notch of the gland.
- 3) Locate the snap ring eyes (you may need to turn the gland inside the barrel to find the snap ring eyes). Compress the snap ring with snap ring pliers.
- 4) Remove the ram assembly (ram, gland, & piston) from barrel.
- 5) Notice the direction they are pointing so they can be properly re-assembled.
- 6) Remove the piston and gland from the ram.
- 7) Remove the old seals and rings and replace them with the new seals and rings. (Seal kits are packaged for several different cylinders. You may have extra parts)
- 8) Clean the cylinder with cleaner and a clean lint free cloth.
- 9) Lubricate the seals and rings to aid assembly.
- 10) Assemble the cylinder by reversing the order.

## CYLINDER REPAIR TIPS

- When disassembling cylinders, keep the parts in correct orientation. Remove parts in sequence.
- Note the direction of the piston and gland. Lay out old seals and parts as they are removed.
- Assemble cylinder in proper order; lubricate to aid assembly.

## GF-184-3D CAT CLAW CYLINDER REPLACEMENT PARTS

REF #	PART #	DESCRIPTION	QTY.
1	M-1601	BARREL	1
2	M-1610	RAM	1
3	G-V	GLAND	1
4	P-J	PISTON	1
5	ZER1805	GREASE FITTING	1
6	#41CK	REPAIR KIT	*

*NOTE: \* Repair kit contains parts to repair one cylinder*

WESTENDORFMFG SJG315240

WESTENDORF MFG. CO., INC. • PH: (712) 423-2762 • FAX: (712) 423-1460 • sales@westendorfmfg.com • www.loaders.com